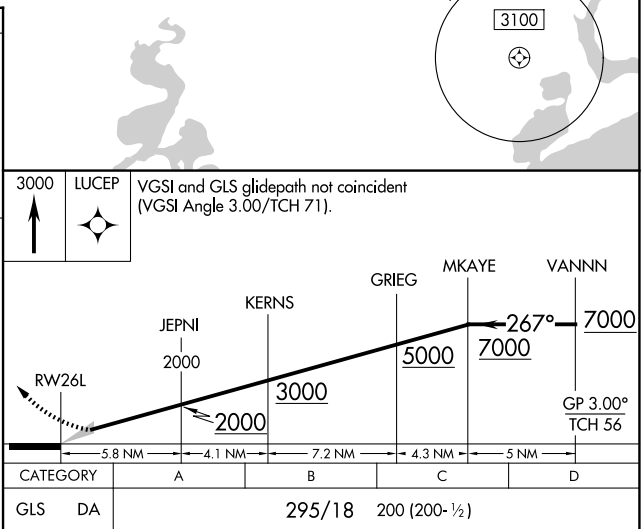
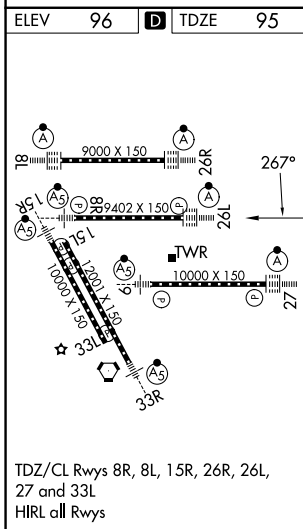
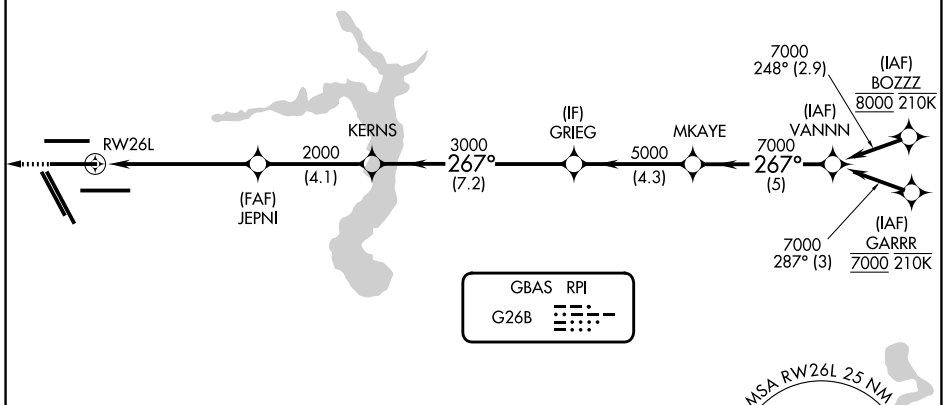
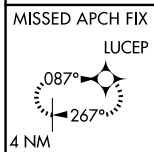


| | | | |
|--|------------------------|-----------------------------|---------------------------------------|
| GBAS CH 20662 G26B | APP CRS 267° | Rwy Ldg TDZE Apt Elev | 9402 95 96 |
|--|------------------------|-----------------------------|---------------------------------------|

GLS RWY 26L

GEORGE BUSH INTCNL/HOUSTON (IAH)

| | | | |
|--|--|--------------------------------------|---|
| RNP APCH - GPS. | | ALSF-2 | MISSED APPROACH: Climb to 3000 direct LUCEP and hold. |
| <p>Simultaneous approach authorized. Use of FD or AP required during simultaneous operations. Autopilot coupled approach NA below 295.</p> | | | |
| D-ATIS 124.05 | HOUSTON APP CON 120.05 379.1 E 124.35 316.15 W | HOUSTON TOWER 125.35 290.2 | GND CON 118.575 |



SC-5, 19 MAR 2026 to 16 APR 2026

SC-5, 19 MAR 2026 to 16 APR 2026