

HOUSTON, TEXAS

AL-5461 (FAA)

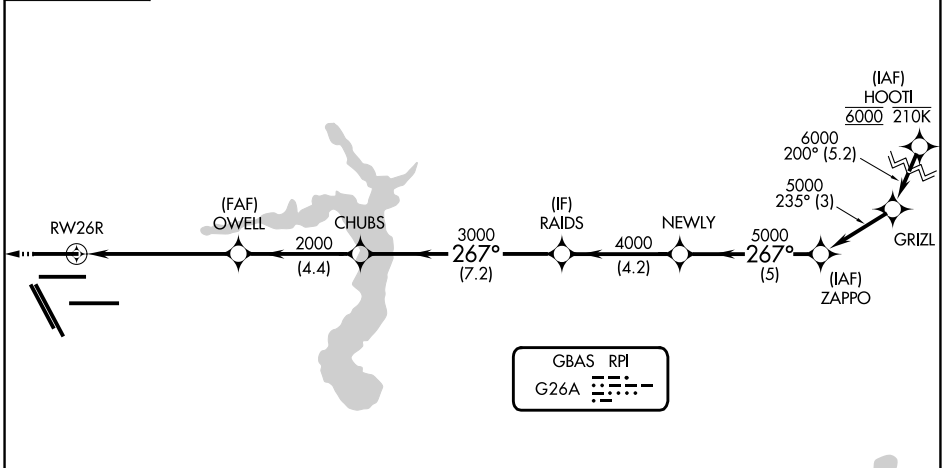
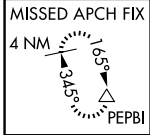
25275

GBAS CH <b>21484</b> <b>G26A</b>	APP CRS <b>267°</b>	Rwy Ldg TDZE Apt Elev	<b>9000</b> <b>95</b> <b>96</b>
--	------------------------	-----------------------------	---------------------------------------

# GLS RWY 26R

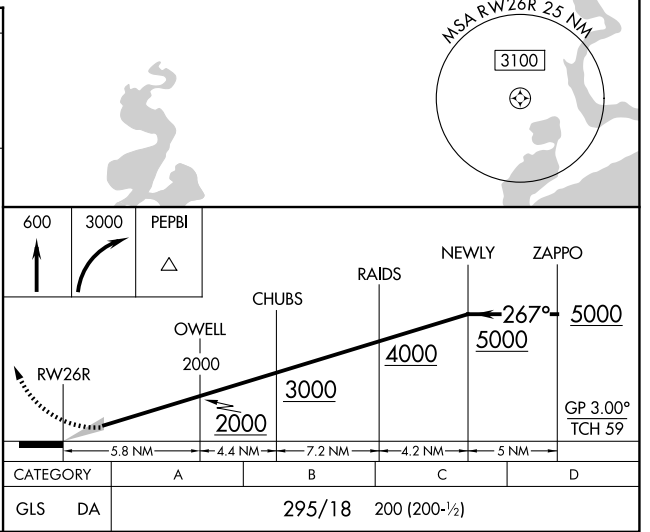
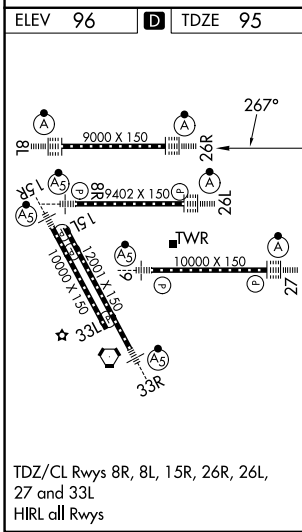
GEORGE BUSH INTCNL/HOUSTON (IAH)

RNP APCH - GPS.		ALSIF-2	MISSED APPROACH: Climb to 600 then climbing right turn to 3000 direct PEPBI and hold.
Simultaneous approach authorized. Use of FD or AP required during simultaneous operations. Autopilot coupled approach NA below 295.			
D-ATIS <b>124.05</b>	HOUSTON APP CON <b>120.05 379.1 E</b> <b>124.35 316.15 W</b>	HOUSTON TOWER <b>120.725 290.2</b>	GND CON <b>118.575</b>



SC-5, 19 MAR 2026 to 16 APR 2026

SC-5, 19 MAR 2026 to 16 APR 2026



HOUSTON, TEXAS  
Amdt 2A 20APR23

29°59'N-95°20'W

# GLS RWY 26R