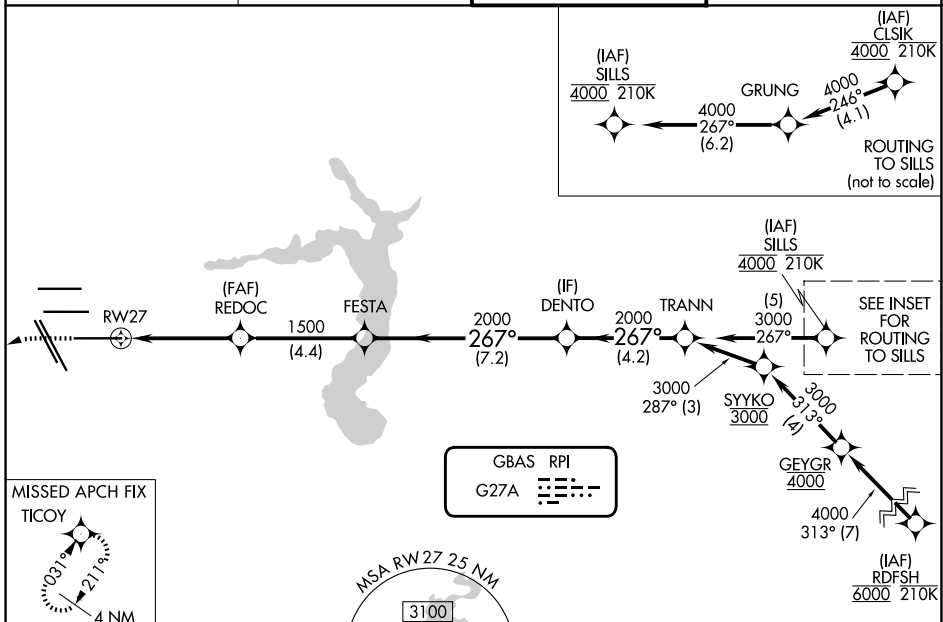


GBAS CH 22306 G27A	APP CRS 267°	Rwy Ldg TDZE Apt Elev	10000 86 96
--	------------------------	-----------------------------	--

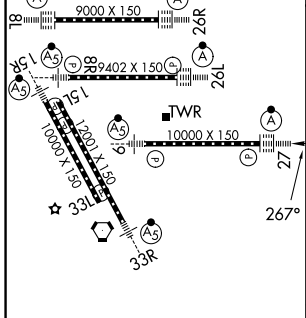
GLS RWY 27

GEORGE BUSH INTCNL/HOUSTON (IAH)

RNP APCH - GPS.		ALSIF-2 	MISSED APPROACH: Climb to 560 then climbing left turn to 3100 direct TICOY and hold.
Simultaneous approach authorized. Use of FD or AP required during simultaneous operations. Autopilot coupled approach NA below 286.			
D-ATIS 124.05	HOUSTON APP CON 120.05 379.1 E 124.35 316.15 W	HOUSTON TOWER 135.15 290.2	GND CON 118.575

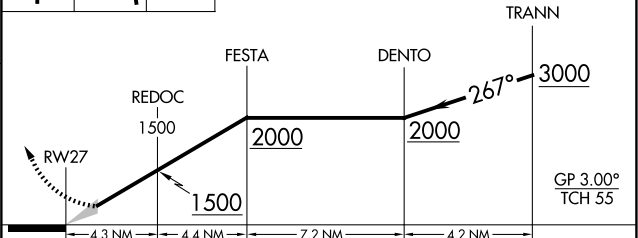


ELEV 96	D	TDZE 86
---------	----------	---------



TDZ/CL Rwy 8R, 8L, 15R, 26R, 26L, 27 and 33L
HIRL all Rwy

560 3100 TICOY
VGSI and GLS glidepath not coincident (VGSI Angle 3.00/TCH 70).



CATEGORY	A	B	C	D
GLS DA	286/18 200 (200-1/2)			

SC-5, 19 MAR 2026 to 16 APR 2026

SC-5, 19 MAR 2026 to 16 APR 2026