

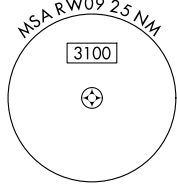
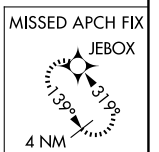
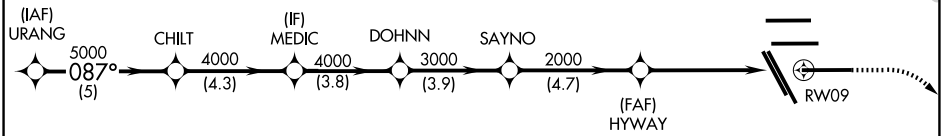
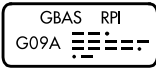
GBAS CH 21895 RPI G09A	APP CRS 087°	Rwy Ldg 10000 TDZE 90 Apt Elev 96
--	------------------------	--

GLS RWY 9

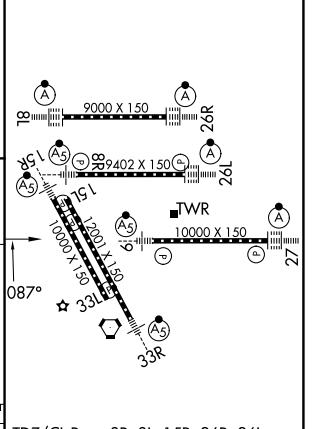
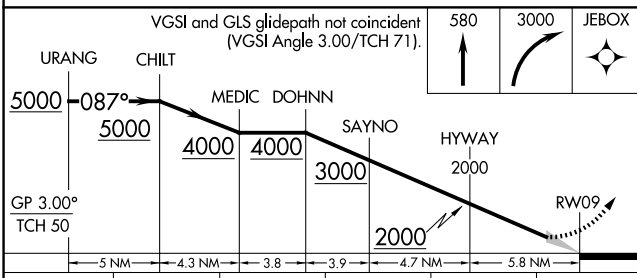
GEORGE BUSH INTCNL/HOUSTON (IAH)

RNP APCH - GPS. Simultaneous approach authorized. Use of FD or AP required during simultaneous operations. Autopilot coupled approach NA below 290. ** RVR 1800 authorized with use of FD or AP or HUD to DA.	MALSR 	MISSED APPROACH: Climb to 580 then climbing right turn to 3000 direct JEBOX and hold.
--	-----------	---

D-ATIS 124.05	HOUSTON APP CON 120.05 379.1 E 124.35 316.15 W	HOUSTON TOWER 135.15 290.2	GND CON 118.575
-------------------------	--	--------------------------------------	---------------------------



ELEV 96		TDZE 90
---------	--	---------



CATEGORY	A	B	C	D	E
GLS DA**	290/24 200 (200-1/2)				

TDZ/CL Rwy's 8R, 8L, 15R, 26R, 26L, 27 and 33L
HIRL all Rwy's

SC-5, 19 MAR 2026 to 16 APR 2026

SC-5, 19 MAR 2026 to 16 APR 2026