


WAAS CH 57902 W33A	APP CRS 329°	Rwy 33R Rwy Ldg 12001 TDZE 89 Apt Elev 96	Rwy 33L Rwy Ldg 10000 TDZE 90 Apt Elev 96
--	------------------------	---	---

RNAV (GPS) RWY 33R

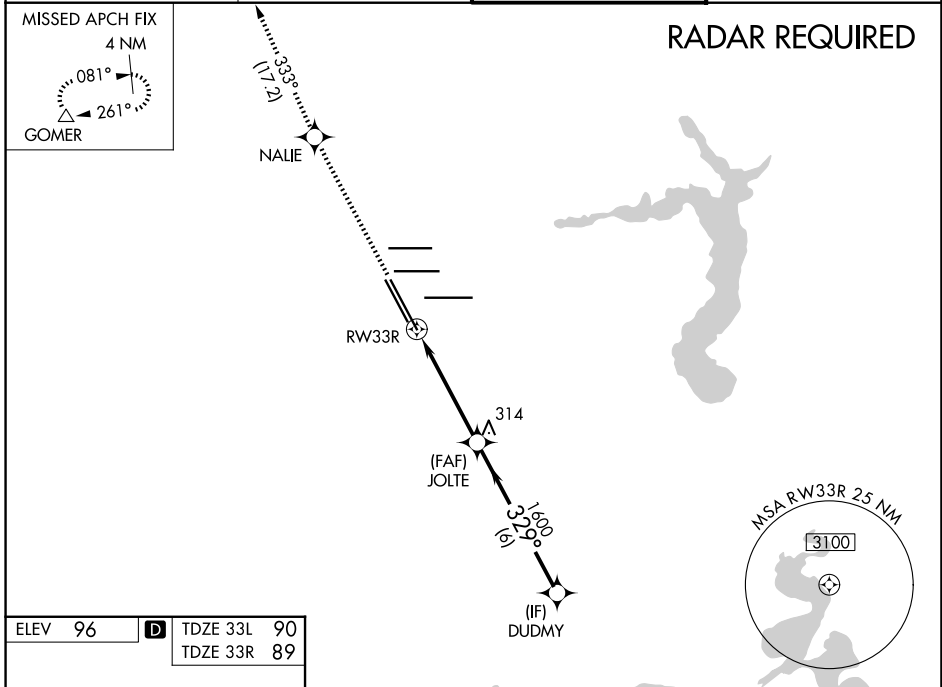
GEORGE BUSH INTCNL/HOUSTON (IAH)

▼ For uncompensated Baro-VNAV systems, LNAV/VNAV NA below -3°C (27°F) or above 54°C (130°F). For inop MALSR, increase LPV Cat E visibility to RVR 4000, LNAV/VNAV Cat E visibility to 1½, and LNAV Cat E visibility to 1½. DME/DME RNP-0.3 NA. **RVR 1800 authorized with use of FD or AP or HUD to DA.

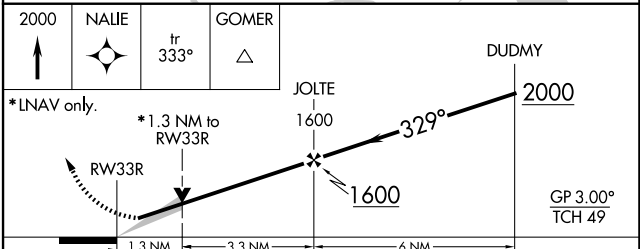
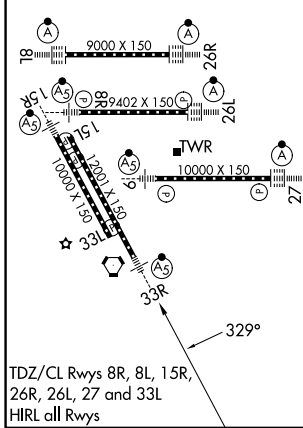
MALSR 

MISSED APPROACH: Climb to 2000 direct NALIE and on track 333° to GOMER and hold.

D-ATIS 124.05	HOUSTON APP CON 120.05 379.1 E 124.35 316.15 W	HOUSTON TOWER 127.3 288.25	GND CON 121.7
-------------------------	--	--------------------------------------	-------------------------



ELEV 96	D TDZE 33L 90
	TDZE 33R 89



CATEGORY	A	B	C	D	E
LPV DA**		289/24	200 (200-½)		
LNAV/VNAV DA		490/45	401 (400-¾)		
LNAV MDA	540/24	451 (500-½)	540/45	451 (500-¾)	
SIDESTEP 33L	540-1	450 (500-1)	540-1½ 450 (500-1½)	540-2 450 (500-2)	NA

SC-5, 19 MAR 2026 to 16 APR 2026

SC-5, 19 MAR 2026 to 16 APR 2026