

APP CRS	Rwy Ldg	10000
267°	TDZE	86
	Apt Elev	96

RNAV (RNP) Y RWY 27

GEORGE BUSH INTCNTL/HOUSTON (IAH)

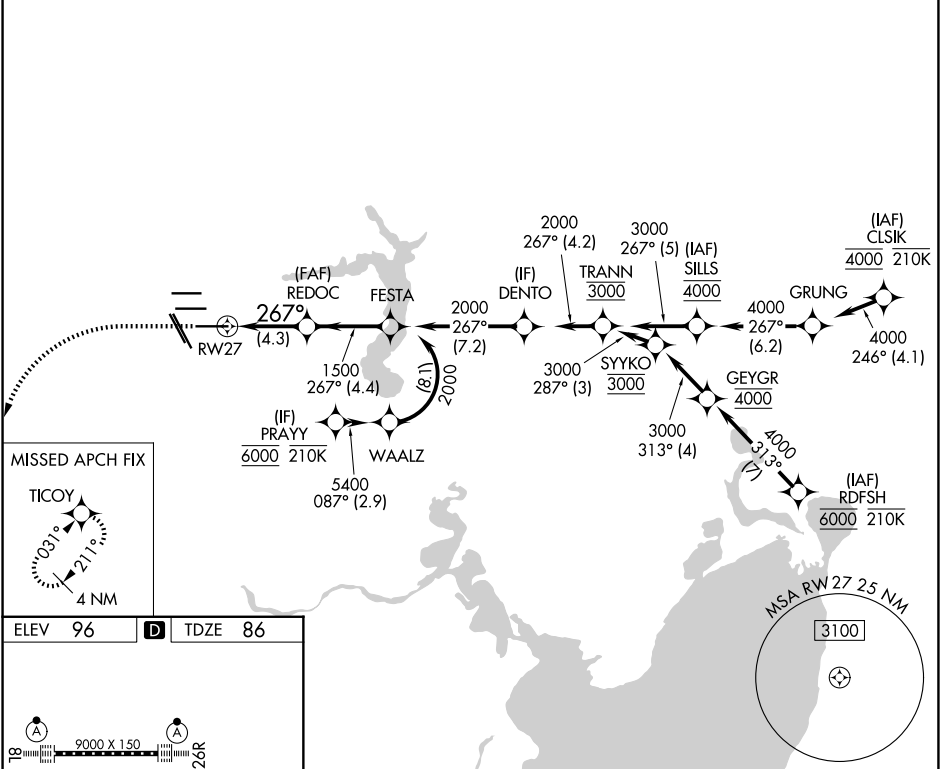
RNP AR APCH - GPS.

Simultaneous approach authorized. Use of FD or AP required during simultaneous operations. For uncompensated Baro-VNAV systems, procedure NA below -2°C or above 54°C. For inop ALS, increase RNP 0.30 all Cats visibility to RVR 4500.



MISSED APPROACH: Climb to 560 then climbing left turn to 3000 direct TICOY and hold.

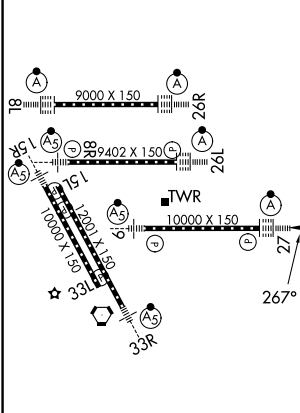
D-ATIS 124.05	HOUSTON APP CON 120.05 379.1 E 124.35 316.15 W	HOUSTON TOWER 135.15 290.2	GND CON 118.575
-------------------------	--	--------------------------------------	---------------------------



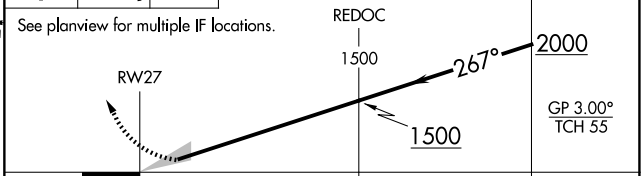
SC-5, 19 MAR 2026 to 16 APR 2026

SC-5, 19 MAR 2026 to 16 APR 2026

ELEV 96	D	TDZE 86
---------	----------	---------



560 3000 TICOY
 VGSi and RNAV glidepath not coincident (VGSi Angle 3.00/TCH 70).



TDZ/CL Rwy 8L, 8R, 15R, 26R, 26L, 27 and 33L
 HIRL all Rwy

CATEGORY	A	B	C	D
RNP 0.30 DA		380/24	294 (300-1/2)	

AUTHORIZATION REQUIRED