

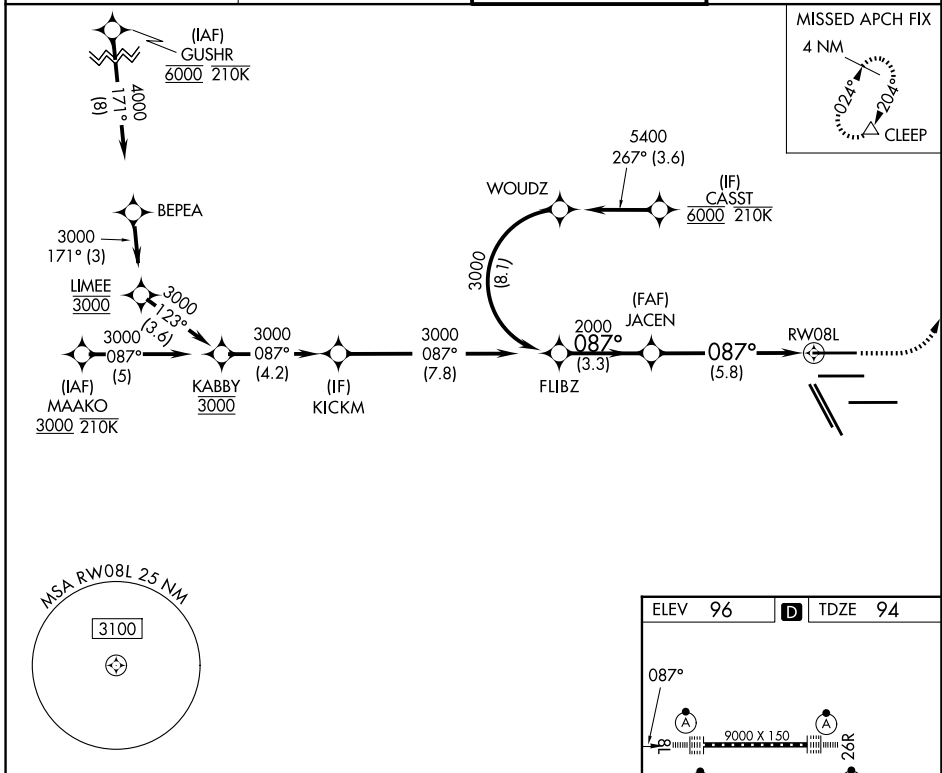
APP CRS	Rwy Ldg	9000
087°	TDZE	94
	Apt Elev	96

RNAV (RNP) Y RWY 8L

GEORGE BUSH INTCNL/HOUSTON (IAH)

RNP AR APCH-GPS.	ALSF-2	MISSED APPROACH: Climb to 580 then climbing left turn to 4000 direct CLEEP and hold.
<p>Simultaneous approach authorized. For uncompensated Baro-VNAV systems, procedure NA below -2°C or above 54°C. Use of FD or AP providing RNAV track guidance required during simultaneous operations. For inop ALS, increase RNP 0.30 all Cats visibility to RVR 5500.</p>		

D-ATIS 124.05	HOUSTON APP CON 120.05 379.1 E 124.35 316.15 W	HOUSTON TOWER 120.72 290.2	GND CON 121.7
-------------------------	--	--------------------------------------	-------------------------

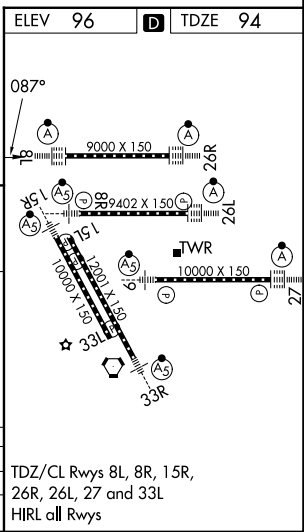


SC-5, 19 MAR 2026 to 16 APR 2026

SC-5, 19 MAR 2026 to 16 APR 2026

See planview for multiple IF locations.

FLIBZ	JACEN	RWY 8L
3000	2000	
GP 3.00° TCH 59		
3.3 NM 5.8 NM		
580	4000	CLEEP
CATEGORY A B C D		
RNP 0.30 DA 465/35 371 (400- $\frac{3}{8}$)		



HOUSTON, TEXAS GEORGE BUSH INTCNL/HOUSTON (IAH)
 Amdt 1 19MAY22 29°59'N-95°20'W **RNAV (RNP) Y RWY 8L**

AUTHORIZATION REQUIRED