

APP CRS	Rwy Ldg	10000
087°	TDZE	91
	Apt Elev	96

RNAV (RNP) Y RWY 9

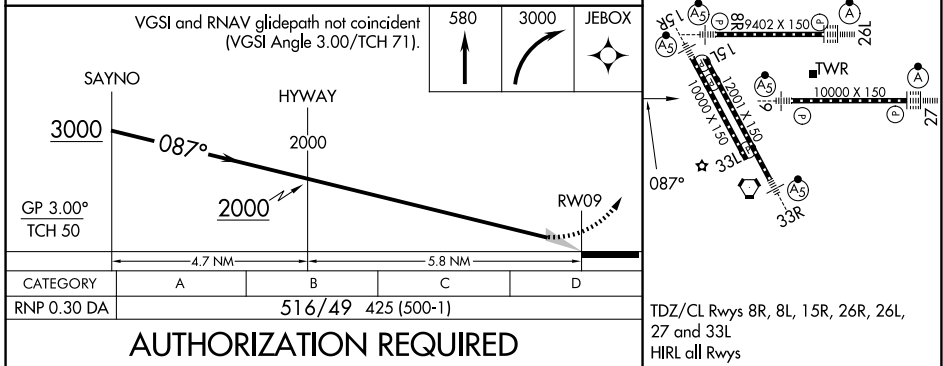
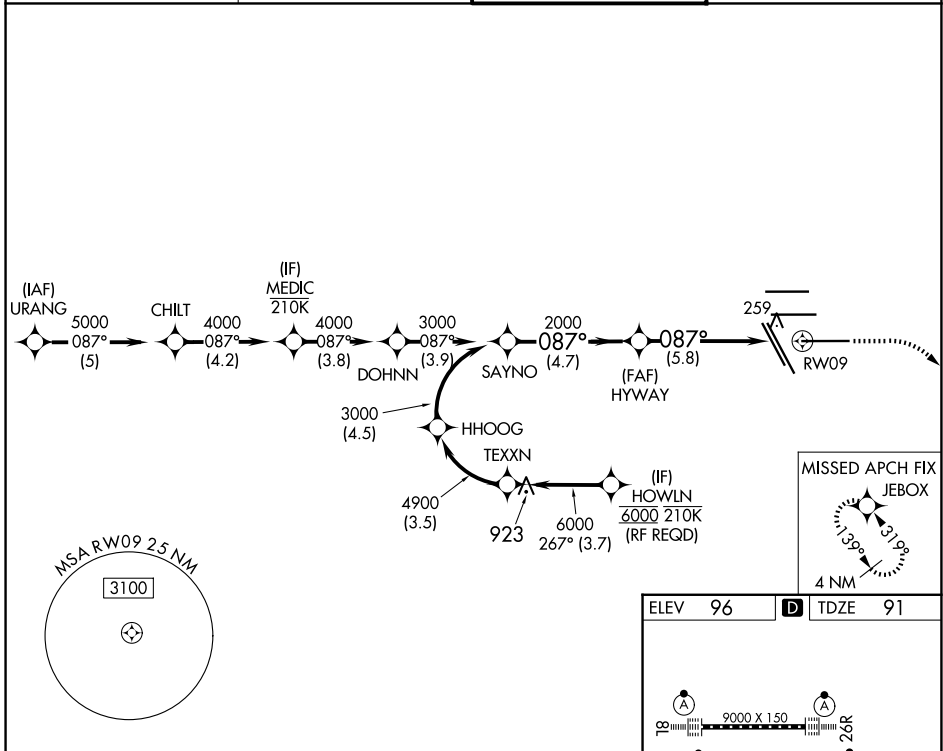
GEORGE BUSH INTCNL/HOUSTON (IAH)

▽ For uncompensated Baro-VNAV systems, procedure NA below -3°C (27°F) or above 54°C (130°F). GPS required. For inop MALS, increase all Cats visibility to 1 $\frac{3}{8}$ mile. Simultaneous approach authorized. Use of FD or AP providing RNAV track guidance required during simultaneous operations.

MALS

MISSED APPROACH: Climb to 580 then climbing right turn to 3000 direct JEBOX and hold.

D-ATIS 124.05	HOUSTON APP CON 120.05 379.1 E 124.35 316.15 W	HOUSTON TOWER 135.15 290.2	GND CON 118.575
-------------------------	--	--------------------------------------	---------------------------



AUTHORIZATION REQUIRED

TDZ/CL Rwwys 8R, 8L, 15R, 26R, 26L, 27 and 33L
HIRL all Rwwys

SC-5, 19 MAR 2026 to 16 APR 2026

SC-5, 19 MAR 2026 to 16 APR 2026