

WAAS CH <b>49226</b> <b>W26D</b>	APP CRS <b>267°</b>	Rwy Ldg <b>9402</b> TDZE <b>95</b> Apt Elev <b>96</b>
--	------------------------	---

# RNAV (GPS) Z RWY 26L

GEORGE BUSH INTCNL/HOUSTON (IAH)

▼ For uncompensated Baro-VNAV systems, LNAV/VNAV NA below -3°C (27°F) or above 54°C (130°F). For inop ALSF, increase LPV Cat E visibility to RVR 4000, LNAV/VNAV Cat E visibility to 1½, and LNAV Cat E visibility to 1¾. DME/DME RNP-0.3 NA. Simultaneous approach authorized with Rwy 26R and Rwy 27. LNAV procedure NA during simultaneous operations. Use of FD or AP providing RNAV track guidance required during simultaneous operations.

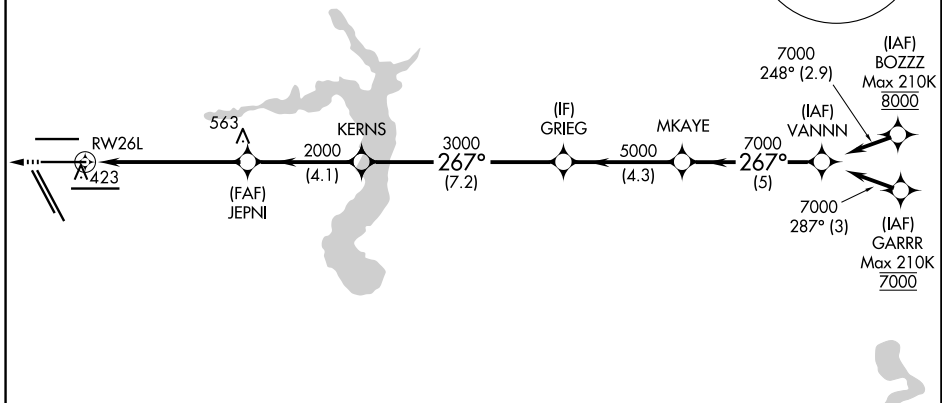
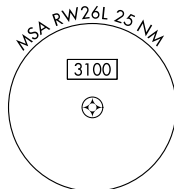
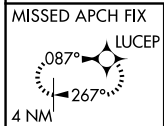
ALSF-2  
MISSED APPROACH:  
Climb to 3000 direct  
LUCEP and hold.

D-ATIS  
**124.05**

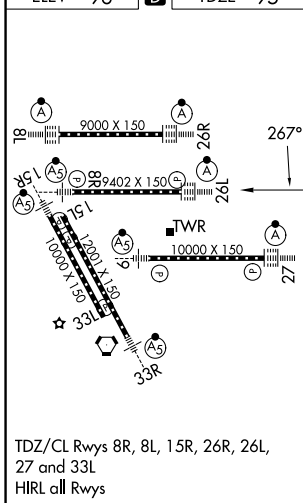
HOUSTON APP CON  
**120.05 379.1 E**  
**124.35 316.15 W**

HOUSTON TOWER  
**125.35 290.2**

GND CON  
**118.575**



ELEV 96 **D** TDZE 95



TDZ/CL Rws 8R, 8L, 15R, 26R, 26L, 27 and 33L  
HIRL all Rws

## RADAR REQUIRED

3000 LUCEP	VGSi and RNAV glidepath not coincident (VGSi Angle 3.00°/TCH 71).				
*LNAV only					
CATEGORY	A	B	C	D	E
LPV DA		295/18	200 (200-½)		
LNAV/VNAV DA		586/60	491 (500-1¼)		
LNAV MDA	680/24	585 (600-½)	680-1¼	585 (600-1¼)	