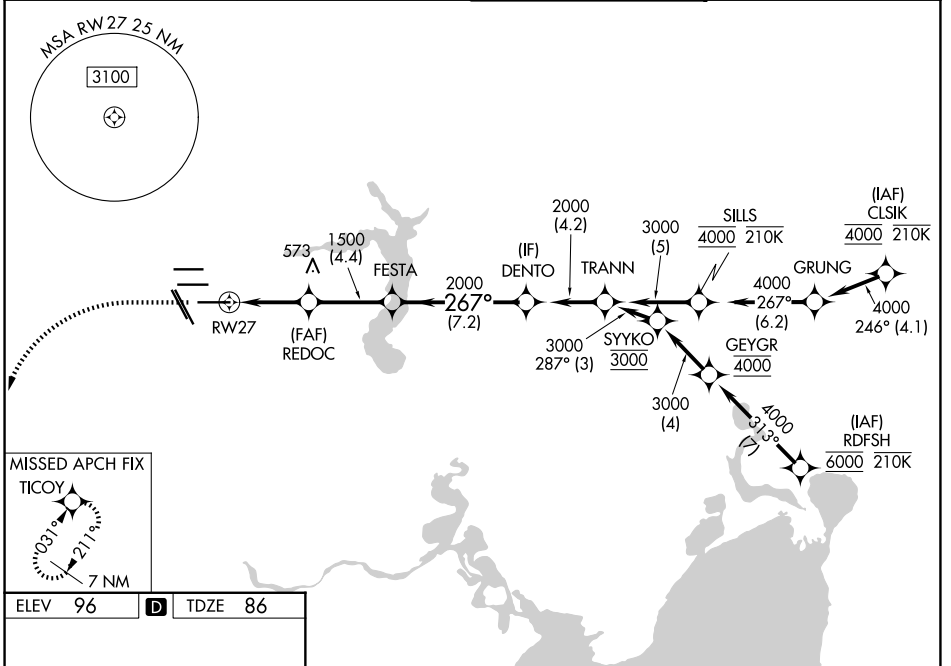


|  |                        |  |
|--|------------------------|--|
| WAAS<br>CH <b>69626</b><br><b>W27A</b> | APP CRS<br><b>267°</b> | Rwy Ldg <b>10000</b><br>TDZE <b>86</b><br>Apt Elev <b>96</b> |
|--|------------------------|--|

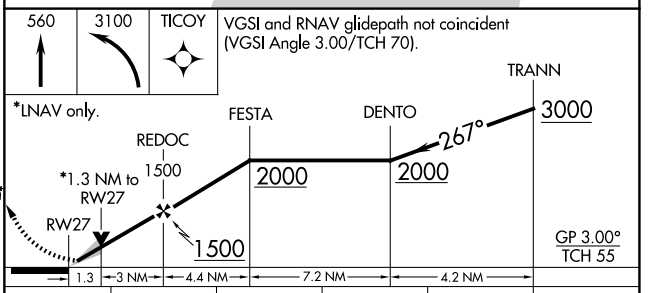
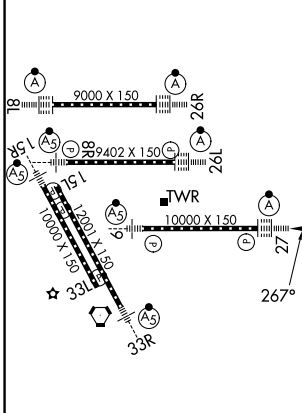
# RNAV (GPS) Z RWY 27

GEORGE BUSH INTCNL/HOUSTON (IAH)

|  |                         |  |  |
|--|-------------------------|--|--|
| RNP APCH.  |                         | ALSF-2<br>   | MISSED APPROACH: Climb to 560 then climbing left turn to 3100 direct TICOY and hold. |
| Simultaneous approach authorized. LNAV procedure NA during simultaneous operations. Use of FD or AP required during simultaneous operations. For uncompensated Baro-VNAV systems, LNAV/VNAV NA below -2°C or above 54°C. For inop ALS, increase LPV Cat E visibility to RVR 4000, LNAV/VNAV Cat E visibility to RVR 6000, and LNAV Cats C, D and E visibility to 1 3/8 SM. | D-ATIS<br><b>124.05</b> | HOUSTON APP CON<br><b>120.05 379.1 E</b><br><b>124.35 316.15 W</b> | HOUSTON TOWER<br><b>135.15 290.2</b>   |
| GND CON<br><b>118.575</b>  |                         |  |  |



|         |          |         |
|---------|----------|---------|
| ELEV 96 | <b>D</b> | TDZE 86 |
|---------|----------|---------|



| CATEGORY     | A      | B             | C             | D           | E |
|--------------|--------|---------------|---------------|-------------|---|
| LPV DA       | 286/18 |               | 200 (200-1/2) |             |   |
| LNAV/VNAV DA | 476/35 |               | 390 (400-5/8) |             |   |
| LNAV MDA     | 560/24 | 474 (500-1/2) | 560/50        | 474 (500-1) |   |

TDZ/CL Rwy 8R, 8L, 15R, 26R, 26L, 27 and 33L  
HIRL all Rwy

SC-5, 19 MAR 2026 to 16 APR 2026

SC-5, 19 MAR 2026 to 16 APR 2026