

SOUL ONE ARRIVAL (RNAV)  
(BAYYY.SOULL1) 08JAN15

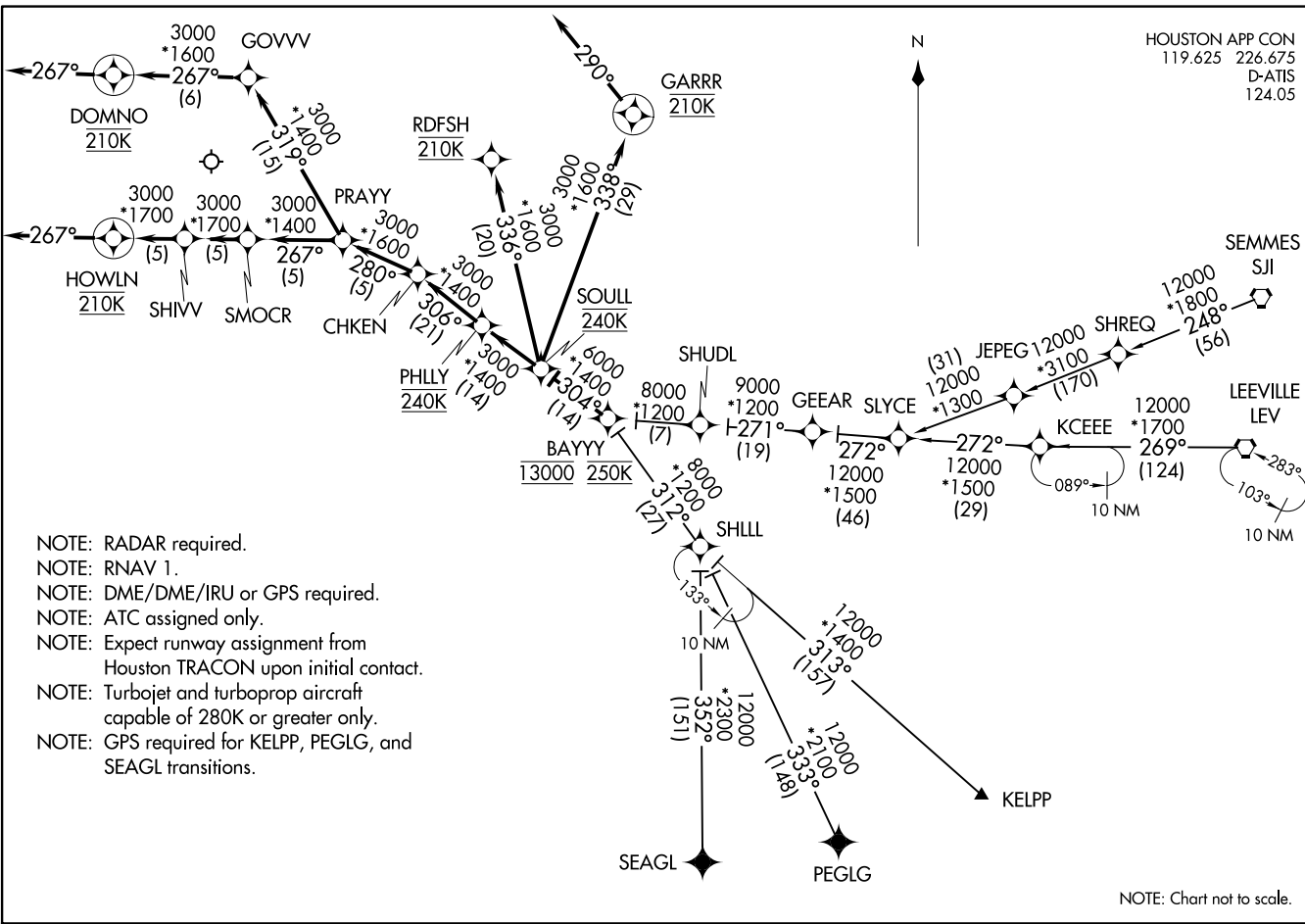
GEORGE BUSH INTCNL/HOUSTON (IAH)  
HOUSTON, TEXAS

(BAYYY.SOULL1) 21112  
SOUL ONE ARRIVAL (RNAV)

AL-5461 (FAA)

GEORGE BUSH INTCNL/HOUSTON (IAH)  
HOUSTON, TEXAS

HOUSTON APP CON  
119.625 226.675  
D-ATIS  
124.05



- NOTE: RADAR required.
- NOTE: RNAV 1.
- NOTE: DME/DME/IRU or GPS required.
- NOTE: ATC assigned only.
- NOTE: Expect runway assignment from Houston TRACON upon initial contact.
- NOTE: Turbojet and turboprop aircraft capable of 280K or greater only.
- NOTE: GPS required for KELPP, PEGLG, and SEAGL transitions.

NOTE: Chart not to scale.

KCEEE TRANSITION (KCEEE.SOULL1):

KELPP TRANSITION (KELPP.SOULL1):

LEEVILLE TRANSITION (LEV.SOULL1):

PEGLG TRANSITION (PEGLG.SOULL1):

SEAGL TRANSITION (SEAGL.SOULL1):

SHLLL TRANSITION (SHLLL.SOULL1):

SEMMES TRANSITION (SJI.SOULL1):

ARRIVAL ROUTE DESCRIPTION

From BAYYY on track 304° to SOULL at 240K.

LANDING RUNWAY 8L: From SOULL on track 304° to PHLLY at 240K, then on track 306° to CHKEN, then on track 280° to PRAYY, then on track 319° to GOVVV, then on track 267° to DOMNO at 210K, then on track 267° at 210K. Expect vectors to final approach course.

LANDING RUNWAY 8R: From SOULL on track 304° to PHLLY at 240K, then on track 306° to CHKEN, then on track 280° to PRAYY, then on track 267° to SMOCR, then on track 267° to SHIVV, then on track 267° to HOWLN at 210K, then on track 267°. Expect vectors to final approach course.

LANDING RUNWAY 9: From SOULL on track 304° to PHLLY at 240K, then on track 306° to CHKEN, then on track 280° to PRAYY, then on track 267° to SMOCR, then on track 267° to SHIVV, then on track 267° to HOWLN at 210K, then on track 267°. Expect vectors to final approach course.

LANDING RUNWAY 26L: From SOULL on track 338° to GARRR at 210K. Expect ILS or LOC Rwy 26L.

LANDING RUNWAY 26R: From SOULL on track 338° to GARRR at 210K, then on track 290° at 210K. Expect vectors to final approach course.

LANDING RUNWAY 27: From SOULL on track 336° to RDFSH at 210K. Expect ILS or LOC Rwy 27.

SC-5, 19 MAR 2026 to 16 APR 2026

SC-5, 19 MAR 2026 to 16 APR 2026