

LOC/DME I-SMF <b>111.1</b> Chan 48	APP CRS <b>168°</b>	Rwy Ldg <b>8598</b> TDZE <b>25</b> Apt Elev <b>27</b>
------------------------------------------	------------------------	----------------------------------------------------------------------

# ILS RWY 17R (SA CAT I)

SACRAMENTO INTL (SMF)

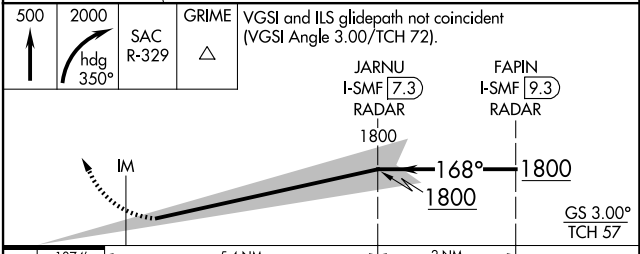
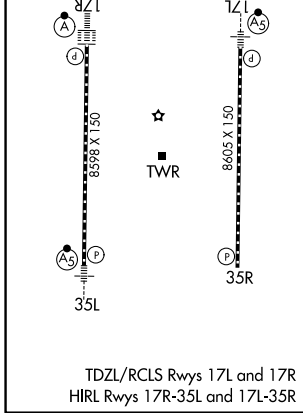
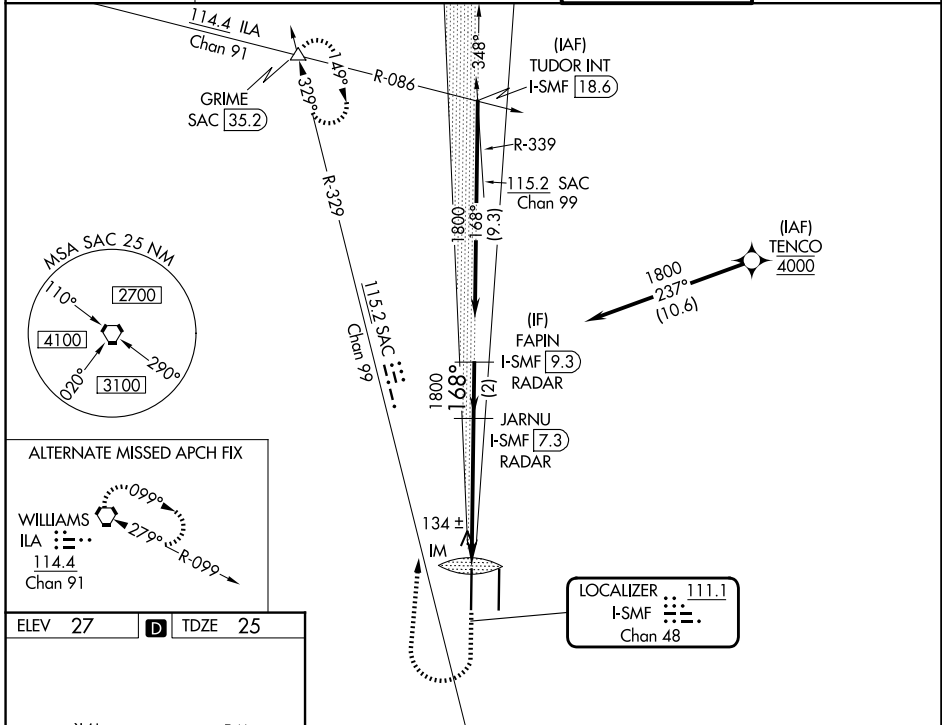
Aircraft not GPS equipped - RADAR required for procedure entry. DME or RADAR required. RNP APCH-GPS. From TENCO.

Simultaneous approach authorized. Requires specific OPSPEC, MSPEC, or LOA approval.

ALSF-2

MISSED APPROACH: Climb to 500 then climbing right turn to 2000 on heading 350° and SAC VORTAC R-329 to GRIME INT/SAC 35.2 DME and hold.

D-ATIS <b>126.75</b>	NORCAL APP CON <b>125.4 259.1 (W-NE) 125.25 257.9 (SW)</b> <b>127.4 317.5 (E-SE)</b>	CAPITOL TOWER <b>125.7 256.7</b>	GND CON <b>121.7 256.7</b>
-------------------------	--------------------------------------------------------------------------------------------	-------------------------------------	-------------------------------



500	2000	SAC R-329	GRIME	VGSI and ILS glidepath not coincident (VGSI Angle 3.00/TCH 72).
		JARNU I-SMF (7.3) RADAR	FAPIN I-SMF (9.3) RADAR	
		1800	168°	1800
		1074'	5.4 NM	2 NM
CATEGORY	A	B	C	D
S-ILS 17R	RA 154/14 150 DA 175			

**SA CATEGORY I ILS - SPECIAL AIRCREW & AIRCRAFT CERTIFICATION REQUIRED**

SW-2, 19 MAR 2026 to 16 APR 2026

SW-2, 19 MAR 2026 to 16 APR 2026