

LOC/DME I-SMF 111.1 Chan 48	APP CRS 168°	Rwy Ldg 8598 TDZE 25 Apt Elev 27
---	------------------------	--

ILS or LOC RWY 17R

SACRAMENTO INTL (SMF)

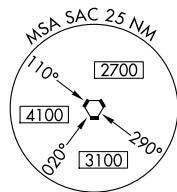
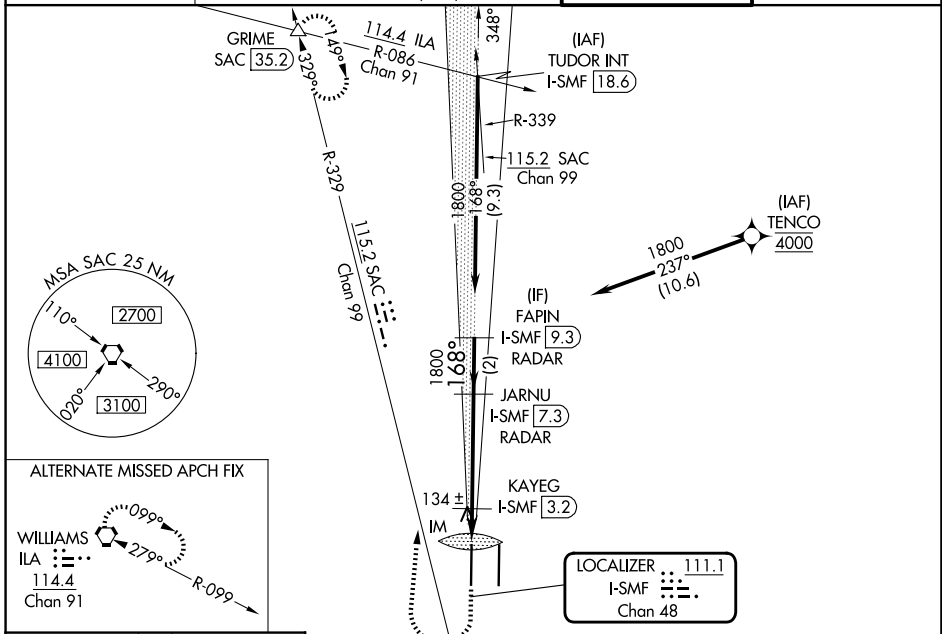
Aircraft not GPS equipped - RADAR required for procedure entry. DME or RADAR required. RNP APCH-GPS. From TENCO.

Simultaneous approach authorized. Circling NA east of Rwy 17R-35L.

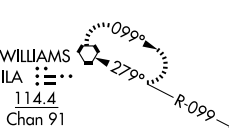


MISSED APPROACH: Climb to 500 then climbing right turn to 2000 on heading 350° and SAC VORTAC R-329 to GRIME INT/SAC 35.2 DME and hold.

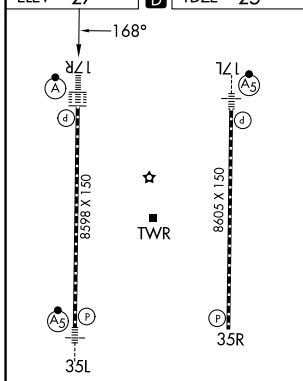
D-ATIS 126.75	NORCAL APP CON 125.4 259.1 (W-NE) 125.25 257.9 (SW) 127.4 317.5 (E-SE)	CAPITOL TOWER 125.7 256.7	GND CON 121.7 256.7
-------------------------	--	-------------------------------------	-------------------------------



ALTERNATE MISSED APCH FIX



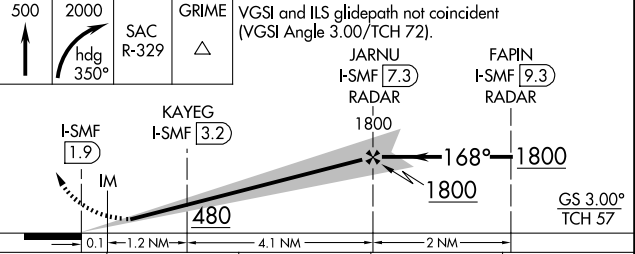
ELEV 27	D	TDZE 25
---------	----------	---------



TDZL/RCLS Rwy 17L and 17R
HIRL Rwy 17R-35L and 17L-35R

FAF to MAP 5.4 NM

Knots	60	90	120	150	180
Min:Sec	5:24	3:36	2:42	2:10	1:48



CATEGORY	A	B	C	D
S-ILS 17R	225/18		200 (200-½)	
S-LOC 17R	480/24	455 (500-½)	480/45	455 (500-¾)
CIRCLING	480-1	453 (500-1)	480-1½ 453 (500-1½)	580-2 553 (600-2)
KAYEG FIX MINIMUMS (DME REQUIRED)				
S-LOC 17R	400/24	375 (400-½)	400/35	375 (400-¾)
CIRCLING	440-1 413 (500-1)	480-1 453 (500-1)	480-1½ 453 (500-1½)	580-2 553 (600-2)

SW-2, 19 MAR 2026 to 16 APR 2026

SW-2, 19 MAR 2026 to 16 APR 2026