

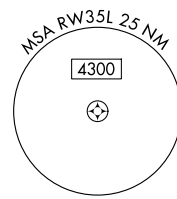
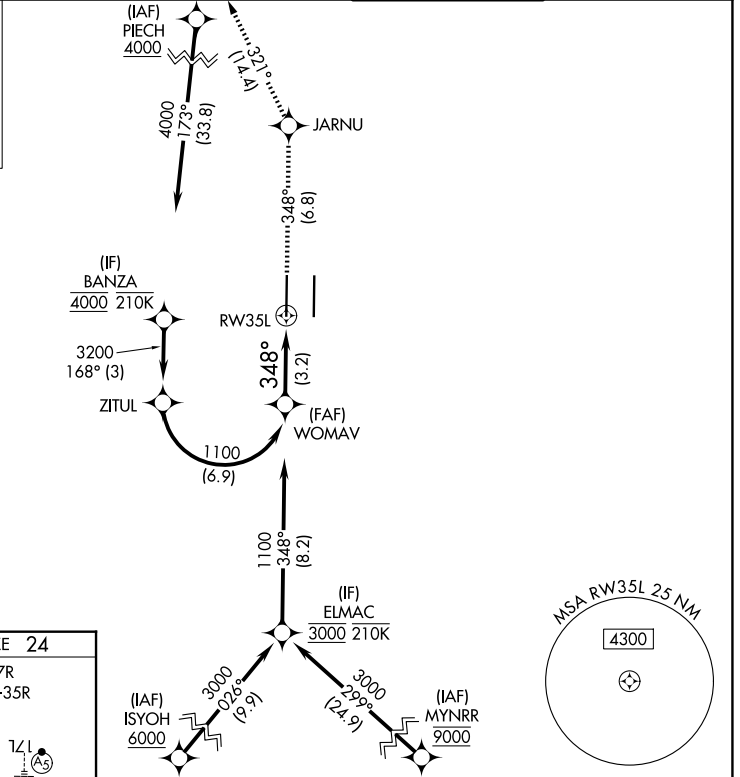
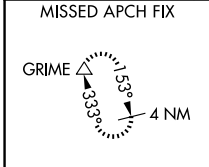
APP CRS 348°	Rwy Ldg TDZE Apt Elev	8598 24 27
------------------------	-----------------------------	---------------------------------------

RNAV (RNP) Z RWY 35L

SACRAMENTO INTL (SMF)

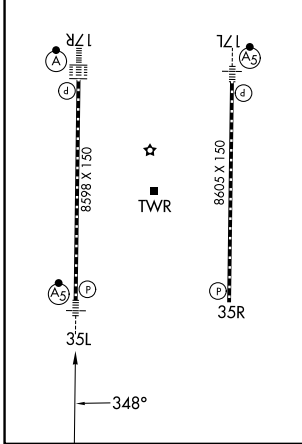
RNP AR APCH-GPS.	MALSR	MISSED APPROACH: Climb to 2000 on track 348° to JARNU and track 321° to GRIME and hold.
▼ For uncompensated Baro-VNAV systems, procedure NA below -2°C or above 54°C. For inop ALS, increase RNP 0.12 all Cats visibility to RVR 4500; increase RNP 0.30 all Cats visibility to RVR 5500.		

D-ATIS 126.75	NORCAL APP CON 125.4 259.1 (W-NE) 125.25 257.9 (SW) 127.4 317.5 (E-SE)	CAPITOL TOWER 125.7 256.7	GND CON 121.7 256.7
-------------------------	--	-------------------------------------	-------------------------------



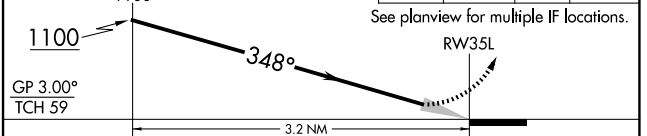
ELEV 27	D	TDZE 24
---------	----------	---------

TDZL/RCLS Rwy's 17L and 17R
HIRL Rwy's 17R-35L and 17L-35R



VGSIs and RNAV glidepath not coincident (VGSIs Angle 3.00/TCH 76). WOMAV 1100	2000 ↑ tr 348°	JARNU ✧	GRIME tr 321° △
---	----------------------	------------	-----------------------

See planview for multiple IF locations.



GP 3.00° TCH 59	A	B	C	D
RNP 0.12 DA		318/24	294 (300-1/2)	
RNP 0.30 DA		382/30	358 (400-5/8)	

AUTHORIZATION REQUIRED

SW-2, 19 MAR 2026 to 16 APR 2026

SW-2, 19 MAR 2026 to 16 APR 2026