

APP CRS 348°	Rwy Ldg TDZE Apt Elev	8605 24 27
------------------------	-----------------------------	---------------------------------------

RNAV (RNP) Z RWY 35R

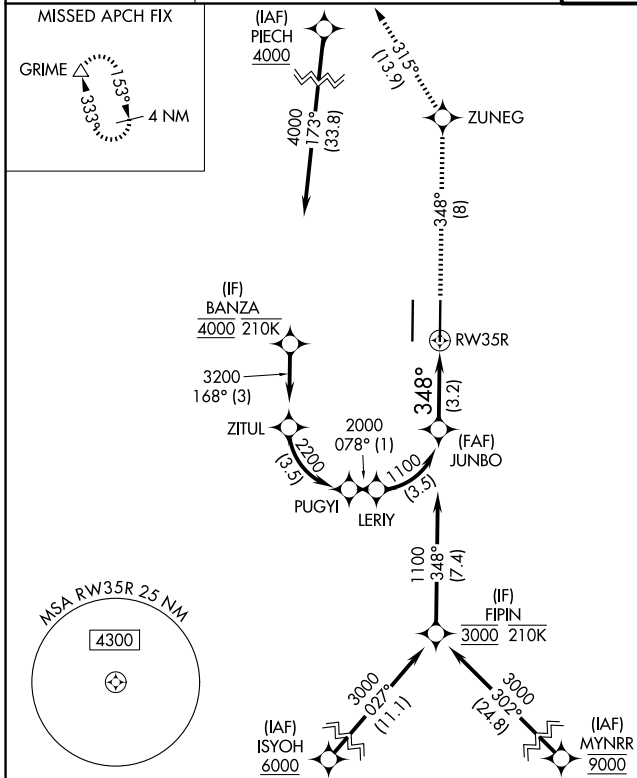
SACRAMENTO INTL (SMF)

RNP AR APCH-GPS.

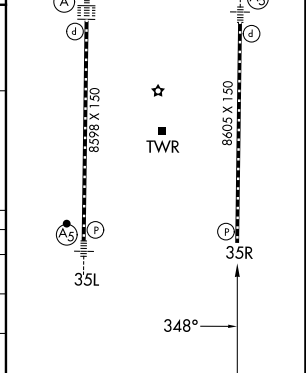
▼ For uncompensated Baro-VNAV systems, procedure NA below -2°C or above 54°C.

MISSED APPROACH: Climb to 2000 on track 348° to ZUNEG and on track 315° to GRIME and hold.

D-ATIS 126.75	NORCAL APP CON 125.4 259.1 (W-NE) 125.25 257.9 (SW) 127.4 317.5 (E-SE)	CAPITOL TOWER 125.7 256.7	GND CON 121.7 256.7
-------------------------	--	-------------------------------------	-------------------------------



ELEV 27	D TDZE 24
TDZL/RCLS Rwy 17L and 17R	
HIRL Rwy 17R-35L and 17L-35R	



JUNBO 1100	2000 tr 348°	ZUNEG	tr 315°	GRIME
GP 3.00° TCH 64	See planview for multiple IF locations.			
CATEGORY	A	B	C	D
RNP 0.10 DA	316/45 292 (300-7/8)			
RNP 0.30 DA	384/55 360 (400-1)			
AUTHORIZATION REQUIRED				

SW-2, 19 MAR 2026 to 16 APR 2026

SW-2, 19 MAR 2026 to 16 APR 2026