

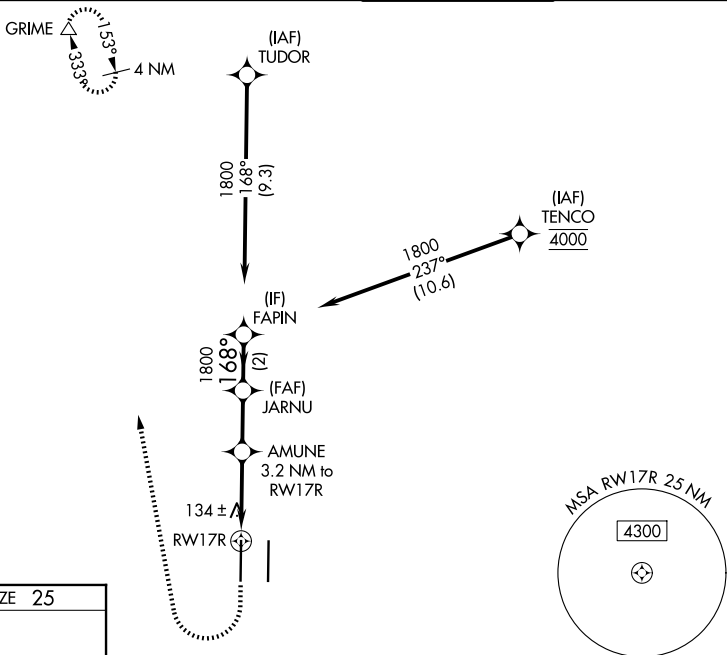
WAAS CH 65728 W17A	APP CRS 168°	Rwy Ldg TDZE Apt Elev	8598 25 27
--	------------------------	-----------------------------	---------------------------------------

RNAV (GPS) Y RWY 17R

SACRAMENTO INTL (SMF)

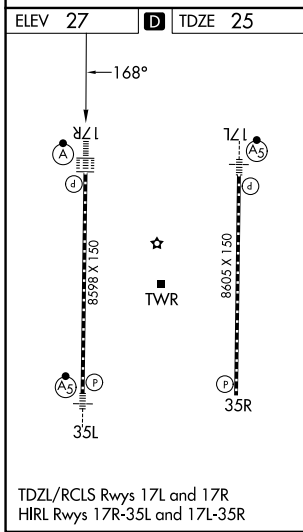
RNP APCH - GPS.	ALSF-2 	MISSED APPROACH: Climb to 500 then climbing right turn to 2000 direct GRIME and hold.
-----------------	------------	---

D-ATIS 126.75	NORCAL APP CON 125.4 259.1 (W-NE) 125.25 257.9 (SW) 127.4 317.5 (E-SE)	CAPITOL TOWER 125.7 256.7	GND CON 121.7 256.7
-------------------------	--	-------------------------------------	-------------------------------



SW-2, 19 MAR 2026 to 16 APR 2026

SW-2, 19 MAR 2026 to 16 APR 2026



500	2000	GRIME	VGSI and RNAV glidepath not coincident (VGSI Angle 3.00/TCH 72).			
		AMUNE 3.2 NM to RWY 17R	JARNU	FAPIN		
		1 NM to RWY 17R	1800	1800	GP 3.00° TCH 57	
		1 NM	2.3 NM	2.2 NM	2 NM	
CATEGORY	A	B	C	D		
LPV DA		225/18	200 (200-½)			
LNAV/VNAV DA		323/24	298 (300-½)			
LNAV MDA	400/24	375 (400-½)	400/35	375 (400-¾)		
CIRCLING	440-1 413 (500-1)	480-1 453 (500-1)	480-1½ 453 (500-1½)	580-2 553 (600-2)		