

TUDOR TWO ARRIVAL

SACRAMENTO INTL (SMF)
SACRAMENTO, CALIFORNIA

AL-5490 (FAA)

NORCAL APP CON
120.45 353.7
OAKLAND CENTER
132.2 350.3

KLAMATH FALLS
115.9 LMT
Chan 106

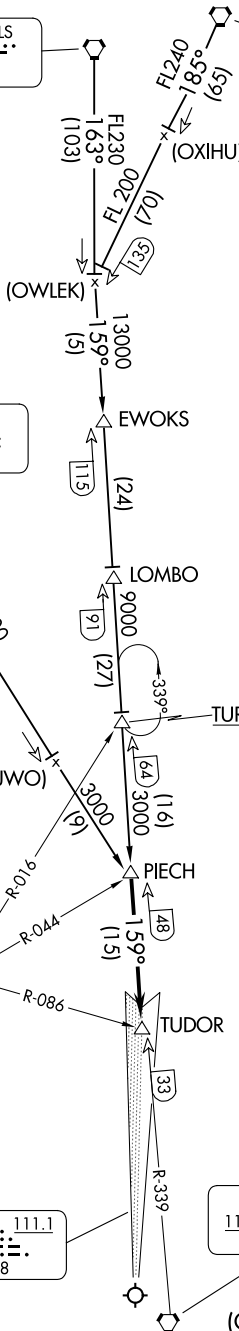
LAKEVIEW
112.0 LKV
Chan 57

RED BLUFF
115.7 RBL
Chan 104

WILLIAMS
114.4 IIA
Chan 91

LOCALIZER
111.1
I-SMF
Chan 48

SACRAMENTO
115.2 SAC
Chan 99



BOWLS
TURBOJET VERTICAL NAVIGATION
PLANNING INFORMATION
Expect 12000

NOTE: RADAR required.

NOTE: Expect RADAR vectors to final approach course.

NOTE: DME required.

NOTE: Chart not to scale.

(CONTINUED ON FOLLOWING PAGE)

TUDOR TWO ARRIVAL

SACRAMENTO, CALIFORNIA
SACRAMENTO INTL (SMF)

SW-2, 19 MAR 2026 to 16 APR 2026

SW-2, 19 MAR 2026 to 16 APR 2026

ARRIVAL ROUTE DESCRIPTION

KLAMATH FALLS TRANSITION (LMT.TUDOR2): From over LMT VORTAC via LMT R-163 and SAC R-339 to PIECH INT. Thence

LAKEVIEW TRANSITION (LKV.TUDOR2): From over LKV VORTAC via LKV R-185 and SAC R-339 to PIECH INT. Thence

RED BLUFF TRANSITION (RBL.TUDOR2): From over RBL VORTAC via RBL R-133 to PIECH INT. Thence

. . . . From PIECH INT via SAC R-339 to TUDOR INT/DME. Expect RADAR vectors.

SW-2, 19 MAR 2026 to 16 APR 2026

SW-2, 19 MAR 2026 to 16 APR 2026