

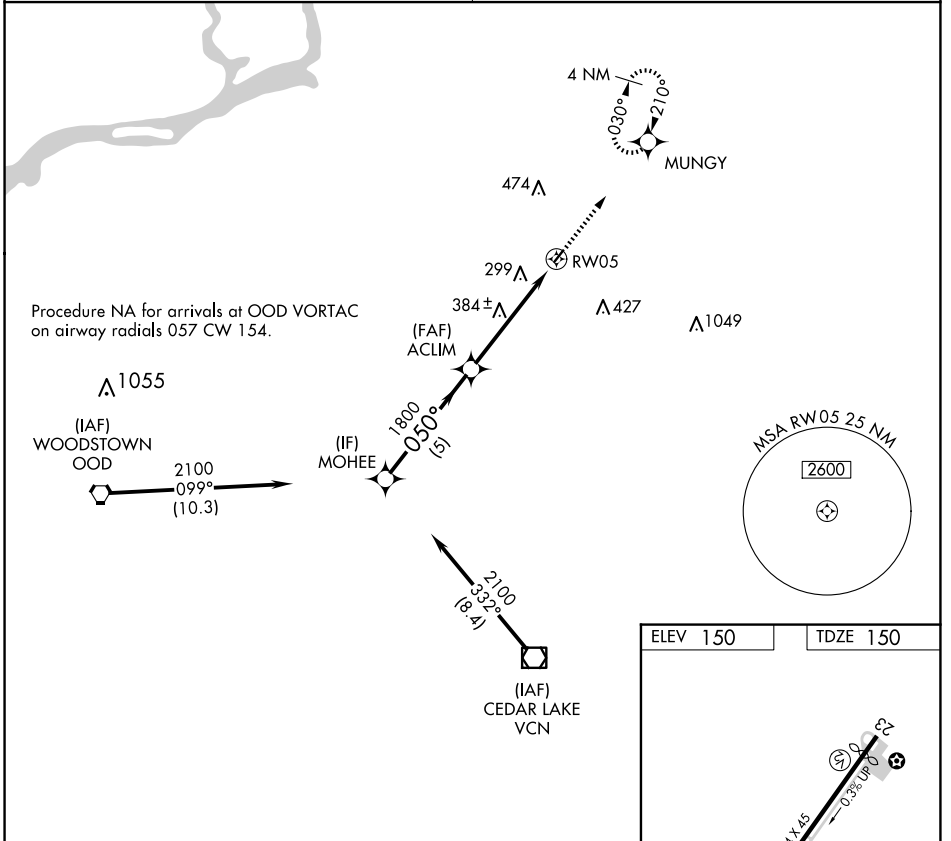
APP CRS	Rwy Idg	<b>2354</b>
<b>050°</b>	TDZE	<b>150</b>
	Apt Elev	<b>150</b>

# RNAV (GPS) RWY 5

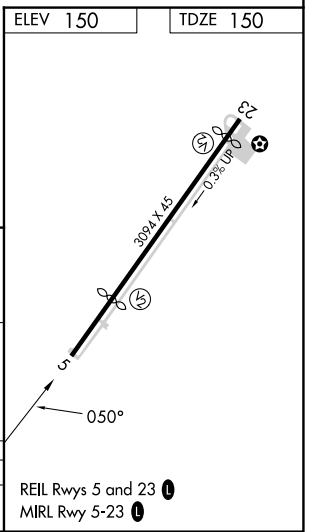
PINE VALLEY (19N)

RNP APCH.	<p>Rwy 5 helicopter visibility reduction below 1 SM NA.          Procedure NA at night. Use Mount Holly altimeter setting; when not received use Philadelphia Intl altimeter setting and increase all MDA 20 feet.</p>	<p>MISSED APPROACH: Climb to 2000 direct MUNGY and hold.</p>
<p>▼ Rwy 5 helicopter visibility reduction below 1 SM NA.          ▲ NA Procedure NA at night. Use Mount Holly altimeter setting; when not received use Philadelphia Intl altimeter setting and increase all MDA 20 feet.</p>		

MC GUIRE APP CON <b>126.475 363.8</b>	UNICOM <b>123.0 (CTAF)</b>
------------------------------------------	-------------------------------



MOHEE	Visual Segment - Obstacles.		2000	MUNGY
2100	050°	ACLIM	1800	RWY 5
5 NM		5 NM		
CATEGORY	A	B	C	D
LNAV MDA	740-1	590 (600-1)	NA	



NE-2, 19 MAR 2026 to 16 APR 2026

NE-2, 19 MAR 2026 to 16 APR 2026