

BLTWY SEVEN DEPARTURE (RNAV)

SUGAR LAND RGNL (SGR)
HOUSTON, TEXAS

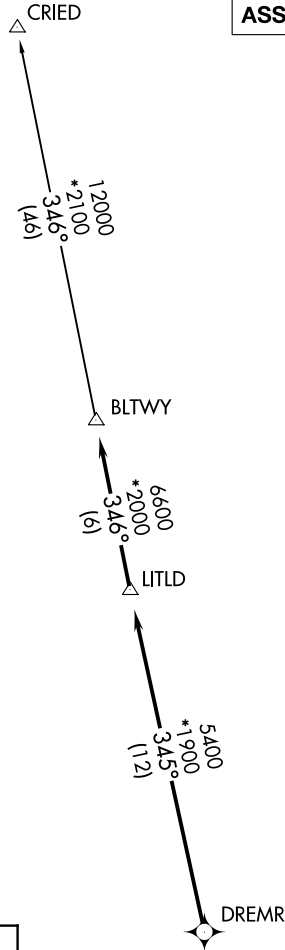
ATIS
 118.125
 CLNC DEL
 121.4
 CLNC DEL
 119.25 (when twr closed)
 GND CON
 121.4
 SUGARLAND TOWER*
 118.65 (CTAF)
 HOUSTON DEP CON
 123.8 257.7

**TOP ALTITUDE:
ASSIGNED BY ATC**

NOTE: RADAR required.
 NOTE: DME/DME/IRU or GPS required.
 NOTE: RNAV 1.

TAKEOFF MINIMUMS

Rwys 17, 35: Standard with minimum climb
 of 500' per NM to 600.



SC-5, 19 MAR 2026 to 16 APR 2026

SC-5, 19 MAR 2026 to 16 APR 2026

DEPARTURE ROUTE DESCRIPTION

TAKEOFF RUNWAY 17: Climb on heading 170°
 to 1500 for RADAR vectors to DREMR, thence . . .

TAKEOFF RUNWAY 35: Climb on heading 350°
 to 1100 for RADAR vectors to DREMR, thence . . .

...on track 345° to LITLD, then on track 346° to
 BLTWY, then on (transition). Maintain ATC
 assigned altitude. Expect filed altitude 10
 minutes after departure.

CRIED TRANSITION (BLTWY7.CRIED)

NOTE: Chart not to scale.