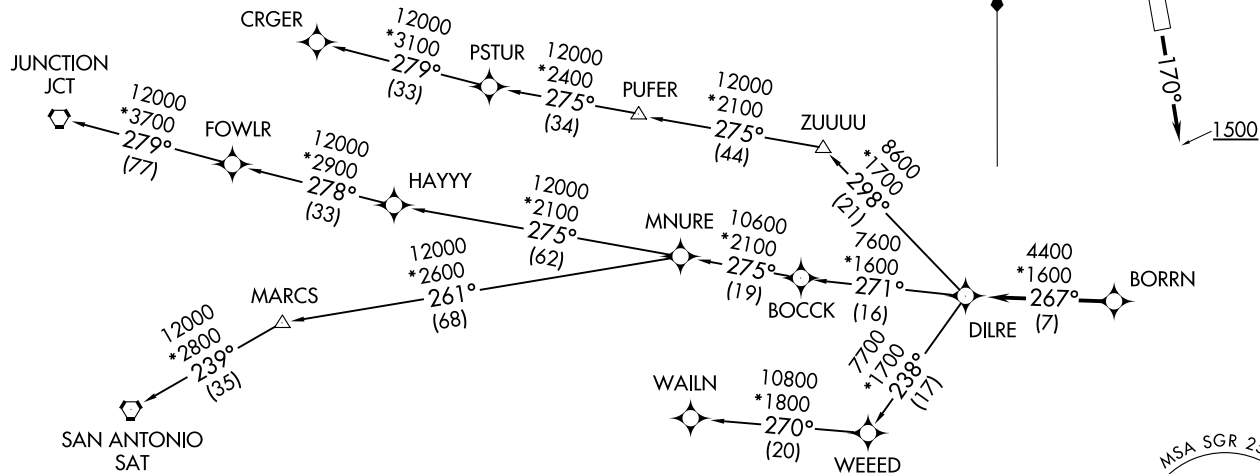


RNAV 1 - DME/DME/IRU or GPS.  
RADAR required.

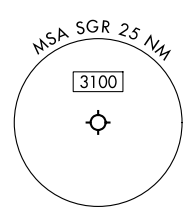
**TOP ALTITUDE:  
ASSIGNED BY ATC**

ATIS  
118.125  
CLNIC DEL  
121.4  
CLNIC DEL (When twr closed)  
119.25  
GND CON  
121.4  
SUGAR LAND TOWER ★  
118.65 (CTAF)  
HOUSTON DEP CON  
123.8 257.7

**TAKEOFF MINIMUMS**  
Rwys 17, 35: Standard with minimum  
climb of 500'/NM to 600.



NOTE: CRGER-TRANSITION ATC assigned only for aircraft departing 54T, AXH, EFD, GLS, HPY, IWS, LBX, LVJ, SGR, TME, T00, T41.



NOTE: Chart not to scale.

(CONTINUED ON FOLLOWING PAGE)

BORRN SIX DEPARTURE (RNAV)  
(BORRN6.BORRN) 30NOV23

SUGAR LAND RGNL (SGR)  
HOUSTON, TEXAS

(BORRN6.BORRN) 25051  
BORRN SIX DEPARTURE (RNAV)

AL-5537 (FAA)

SUGAR LAND RGNL (SGR)  
HOUSTON, TEXAS

# BORRN SIX DEPARTURE (RNAV)



## DEPARTURE ROUTE DESCRIPTION

TAKEOFF RUNWAY 17: Climb on heading 170° to 1500, for RADAR vectors to BORRN, thence. . . .

TAKEOFF RUNWAY 35: Climb on heading 350° to 1100, for RADAR vectors to BORRN, thence. . . .

. . . .on track 267° to DILRE, then on (transition). Maintain ATC assigned altitude. Expect filed altitude 10 minutes after departure.

CRGER TRANSITION (BORRN6.CRGER)

JUNCTION TRANSITION (BORRN6.JCT)

MNURE TRANSITION (BORRN6.MNURE)

SAN ANTONIO TRANSITION (BORRN6.SAT)

WAILN TRANSITION (BORRN6.WAILN)

SC-5, 19 MAR 2026 to 16 APR 2026

SC-5, 19 MAR 2026 to 16 APR 2026