

LOC/DME I-TXH <b>110.7</b> Chan <b>44</b>	APP CRS <b>350°</b>	Rwy Ldg TDZE <b>78</b> Apt Elev <b>82</b>	<b>6016</b>
---	------------------------	---	-------------

# ILS or LOC RWY 35

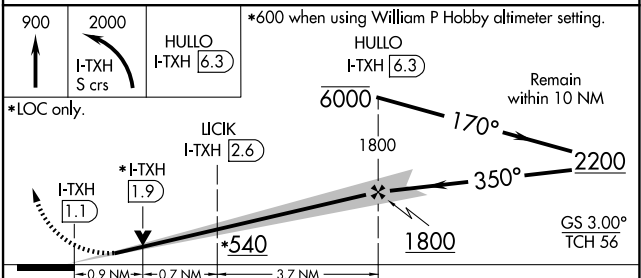
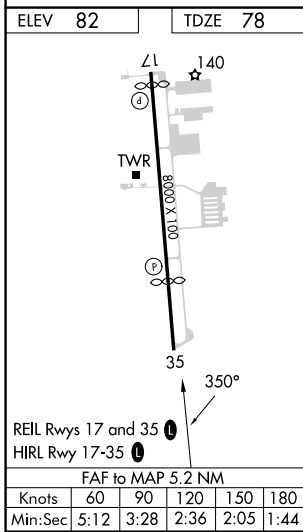
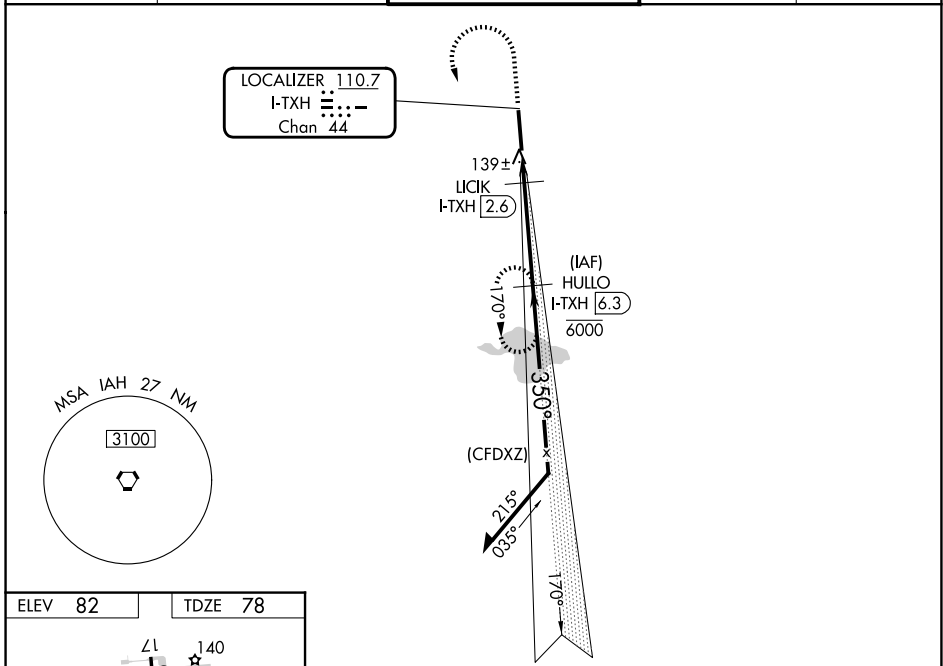
SUGAR LAND RGNL (SGR)

DME required.  
RADAR required for procedure entry.

VDP NA when using William P Hobby altimeter setting. When local altimeter setting not received, use William P Hobby altimeter setting and increase all DA 51 feet and all MDA 60 feet and S-LOC 35 Cat C/D visibility 1/8 mile, and Circling Cat C/D visibility 1/4 mile.

MISSED APPROACH: Climb to 900 then climbing left turn to 2000 on I-TXH localizer south course to HULLO/I-TXH 6.3 DME and hold.

ATIS <b>118.125</b>	HOUSTON APP CON <b>123.8 257.7</b>	SUGAR LAND TOWER ★ <b>118.65 (CTAF) 0</b>	GND CON <b>121.4</b>	UNICOM <b>122.95</b>
------------------------	---------------------------------------	--	-------------------------	-------------------------



CATEGORY	A	B	C	D
S-ILS 35	278-3/4		200 (200-3/4)	
S-LOC 35	400-1		322 (400-1)	
CIRCLING	720-1	638 (700-1)	720-1 3/4 638 (700-1 3/4)	720-2 638 (700-2)