

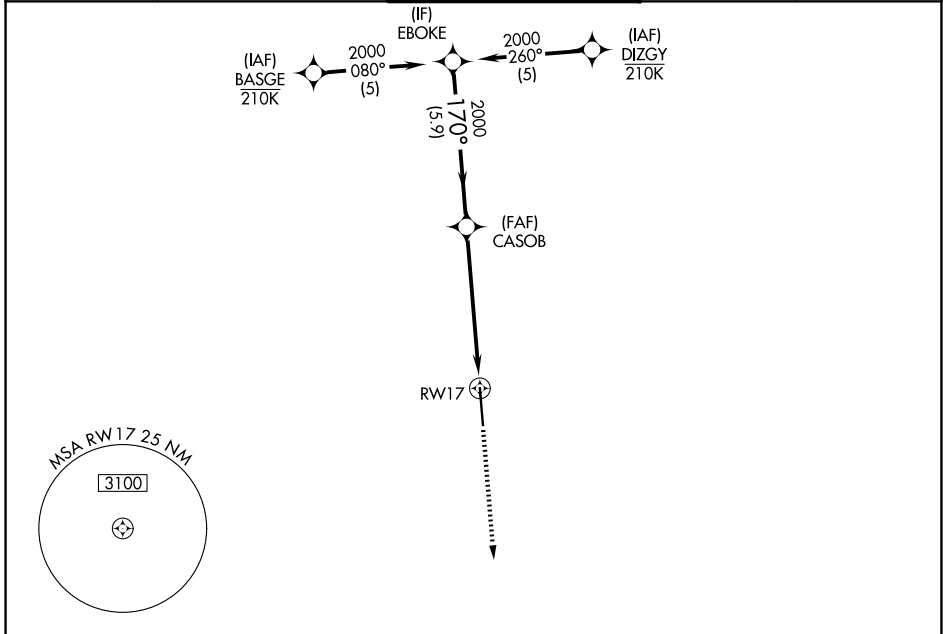
WAAS CH <b>82513</b> <b>W17A</b>	APP CRS <b>170°</b>	Rwy Ldg TDZE Apt Elev	<b>7620</b> <b>81</b> <b>81</b>
--	------------------------	-----------------------------	---------------------------------------

# RNAV (GPS) RWY 17

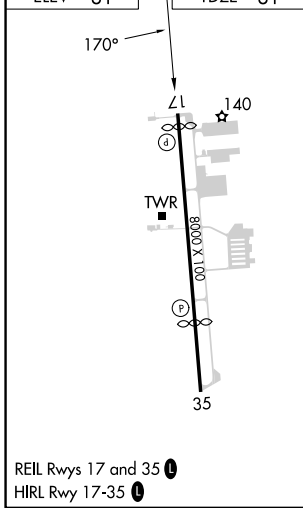
SUGAR LAND RGNL (SGR)

RNP APCH - GPS.	MISSED APPROACH: Climb to 2000 direct POPAM and hold.
<p>▼ For uncompensated Baro-VNAV systems, LNAV/VNAV NA below -4°C or above 54°C. Rwy 17 helicopter visibility reduction below 3/4 SM NA.</p>	

ATIS <b>118.125</b>	HOUSTON APP CON <b>123.8 257.7</b>	SUGAR LAND TOWER ★ <b>118.65 (CTAF) 0</b>	GND CON <b>121.4</b>	UNICOM <b>122.95</b>
------------------------	---------------------------------------	--	-------------------------	-------------------------



ELEV 81	TDZE 81
---------	---------



REIL Rwy 17 and 35 0  
HIRL Rwy 17-35 0



VGSi and RNAV glidepath not coincident (VGSi Angle 3.50/TCH 52).				2000	POPAM
EBOKE 2000 GP 3.00° TCH 54		CASOB 2000		1.4 NM to RWY 17	RWY 17
5.9 NM		4.5 NM			
CATEGORY	A	B	C	D	
LPV DA	398-1 317 (400-1)				
LNAV/VNAV DA	704-2 623 (700-2)				
LNAV MDA	640-1 559 (600-1)		640-1 5/8 559 (600-1 5/8)		
CIRCLING	720-1 639 (700-1)		720-1 3/4 639 (700-1 3/4)		720-2 639 (700-2)