

WAAS CH 56219 W35A	APP CRS 350°	Rwy Ldg TDZE 78 Apt Elev 82	6016
--	------------------------	---	-------------

RNAV (GPS) RWY 35

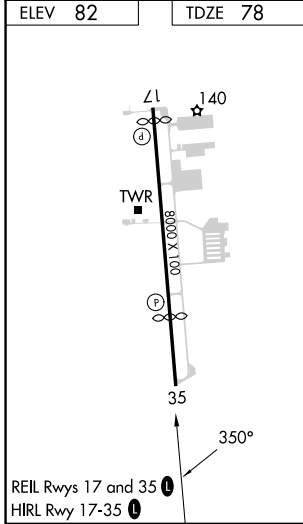
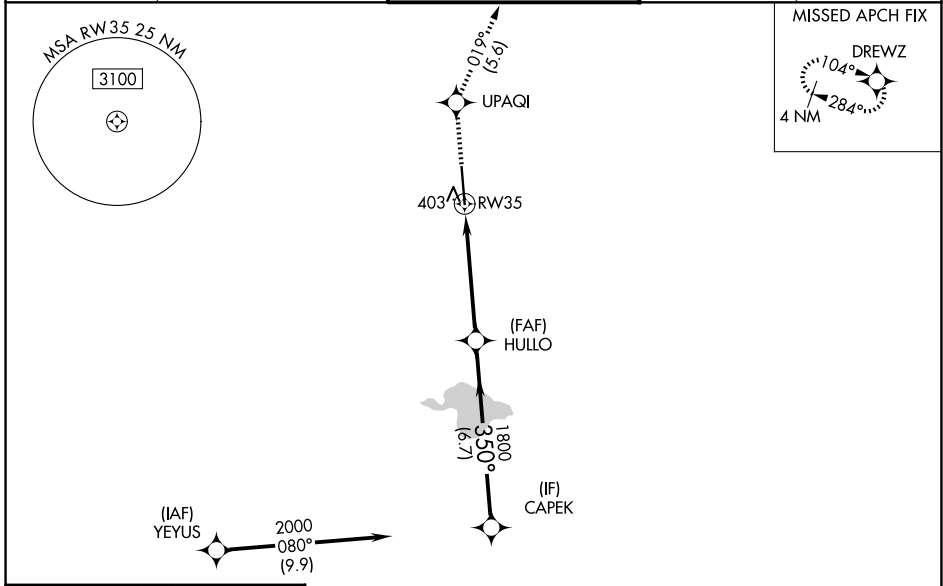
SUGAR LAND RGNL (SGR)

RNP APCH.

⚠ For uncompensated Baro-VNAV systems, LNAV/VNAV NA below -15°C (5°F) or above 43°C (109°F).
⚠ Baro-VNAV and VDP NA when using William P Hobby altimeter setting. When local altimeter setting not received, use William P Hobby altimeter setting: increase all DA 51 feet; increase all MDA 60 feet and increase LNAV-VNAV all Cats visibility to 1¾, LNAV Cat C/D visibility to 1⅞, and Circling Cat C visibility to 2, Cat D to 2¼. When VGSI inop., Circling Rwy 17 NA at night.

MISSED APPROACH: Climb to 2000 direct UPAQI and on track 019° to DREWZ and hold.

ATIS 118.125	HOUSTON APP CON 123.8 257.7	SUGAR LAND TOWER ★ 118.65 (CTAF) 0	GND CON 121.4	UNICOM 122.95
------------------------	---------------------------------------	--	-------------------------	-------------------------



RADAR REQUIRED

2000	UPAQI	tr 019°	DREWZ	
* LNAV only.				
* 1.7 NM to RW35				
HULLO 1800				
CAPEK 2000				
GP 3.00°				
TCH 56				
1.7 3.5 NM 6.7 NM				
CATEGORY	A	B	C	D
LPV DA	278-3/4 200 (200-3/4)			
LNAV/VNAV DA	567-15/8 489 (500-15/8)			
LNAV MDA	660-1 582 (600-1)		660-13/4 582 (600-13/4)	
CIRCLING	720-1 638 (700-1)		720-13/4 720-2 638 (700-13/4) 638 (700-2)	

SC-5, 19 MAR 2026 to 16 APR 2026

SC-5, 19 MAR 2026 to 16 APR 2026