

(KER4.KER) 24081  
**KERMIT FOUR DEPARTURE**

AL-5551 (FAA)

MID-CAROLINA RGNL (RUQ)  
 SALISBURY, NORTH CAROLINA

CHARLOTTE DEP CON  
 128.325 307.8  
 AWOS-3  
 118.175  
 CLNC DEL  
 127.35  
 UNICOM  
 122.725

RADAR and DME required.

**TOP ALTITUDE:  
 3000**

PULASKI  
 116.8 PSK  
 Chan 115

NALEY

BARRETT'S MOUNTAIN  
 113.75 BZM  
 Chan 84(Y)

LIBERTY  
 113.0 LB  
 Chan 77

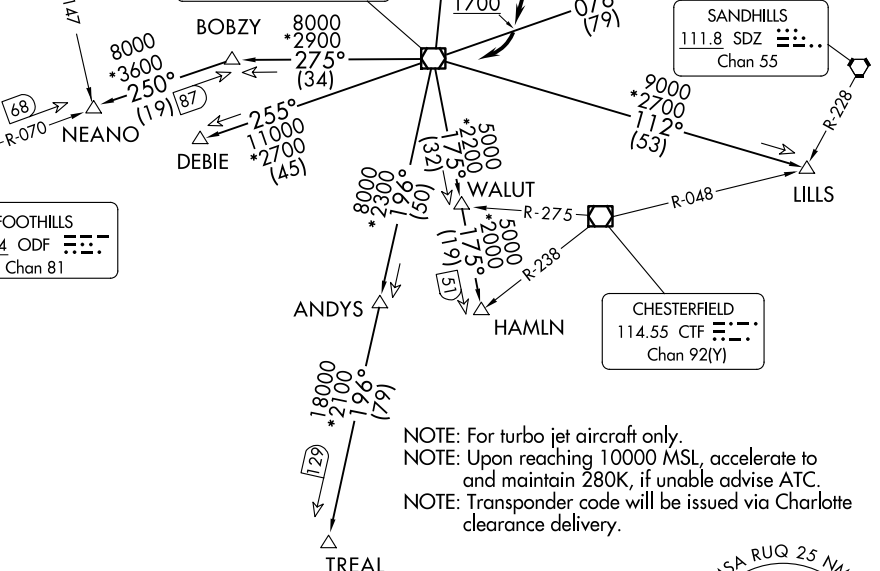
SUGARLOAF MOUNTAIN  
 112.2 SUG  
 Chan 59

RALEIGH/DURHAM  
 117.2 RDU  
 Chan 119

CHARLOTTE  
 115.0 CLT  
 Chan 97

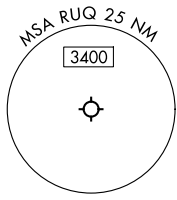
SANDHILLS  
 111.8 SDZ  
 Chan 55

FOOTHILLS  
 113.4 ODF  
 Chan 81



NOTE: For turbo jet aircraft only.  
 NOTE: Upon reaching 10000 MSL, accelerate to and maintain 280K, if unable advise ATC.  
 NOTE: Transponder code will be issued via Charlotte clearance delivery.

**TAKEOFF MINIMUMS**  
 Rwy 2: Standard.  
 Rwy 20: 400-2¾ or standard with minimum climb of 205' per NM to 1300, or alternatively, with standard takeoff minimums and a normal 200' per NM climb gradient, takeoff must occur no later than 1200' prior to DER.



NOTE: Chart not to scale.

(CONTINUED ON FOLLOWING PAGE)

SE-2, 19 MAR 2026 to 16 APR 2026

SE-2, 19 MAR 2026 to 16 APR 2026

**KERMIT FOUR DEPARTURE**  
 (KER4.KER) 21MAR24

SALISBURY, NORTH CAROLINA  
 MID-CAROLINA RGNL (RUQ)

# KERMIT FOUR DEPARTURE



## DEPARTURE ROUTE DESCRIPTION

TAKEOFF RUNWAY 2: Climb on heading 022°, thence . . . .

TAKEOFF RUNWAY 20: Climb on heading 202° to 1700 before turning right, thence . . . .

. . . . on RADAR vectors to intercept filed/assigned transition or enroute fix/navaid.  
Maintain 3000, expect filed altitude/flight level 10 minutes after departure.

ANDYS TRANSITION (KER4.ANDYS): From over CLT VOR/DME on CLT R-196 to ANDYS.

DEBIE TRANSITION (KER4.DEBIE): From over CLT VOR/DME on CLT R-255 to DEBIE.

HAMLN TRANSITION (KER4.HAMLN): From over CLT VOR/DME on CLT R-175 to HAMLN.

JOTTA TRANSITION (KER4.JOTTA): From over CLT VOR/DME on CLT R-011 to JOTTA.

LILLS TRANSITION (KER4.LILLS): From over CLT VOR/DME on CLT R-112 to LILLS.

MERIL TRANSITION (KER4.MERIL): From over CLT VOR/DME on CLT R-076 to MERIL.

NALEY TRANSITION (KER4.NALEY): From over CLT VOR/DME on CLT R-011 to NALEY.

NEANO TRANSITION (KER4.NEANO): From over CLT VOR/DME on CLT R-275 to BOBZY,  
then on ODF R-070 to NEANO.

TREAL TRANSITION (KER4.TREAL): From over CLT VOR/DME on CLT R-196 to TREAL.

SE-2, 19 MAR 2026 to 16 APR 2026

SE-2, 19 MAR 2026 to 16 APR 2026