

WAAS CH 9933Z W35A	APP CRS 346°	Rwy Ldg TDZE Apt Elev	5318 4729 4734
--	------------------------	-----------------------------	---

RNAV (GPS) RWY 35

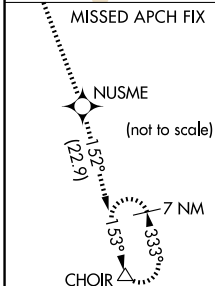
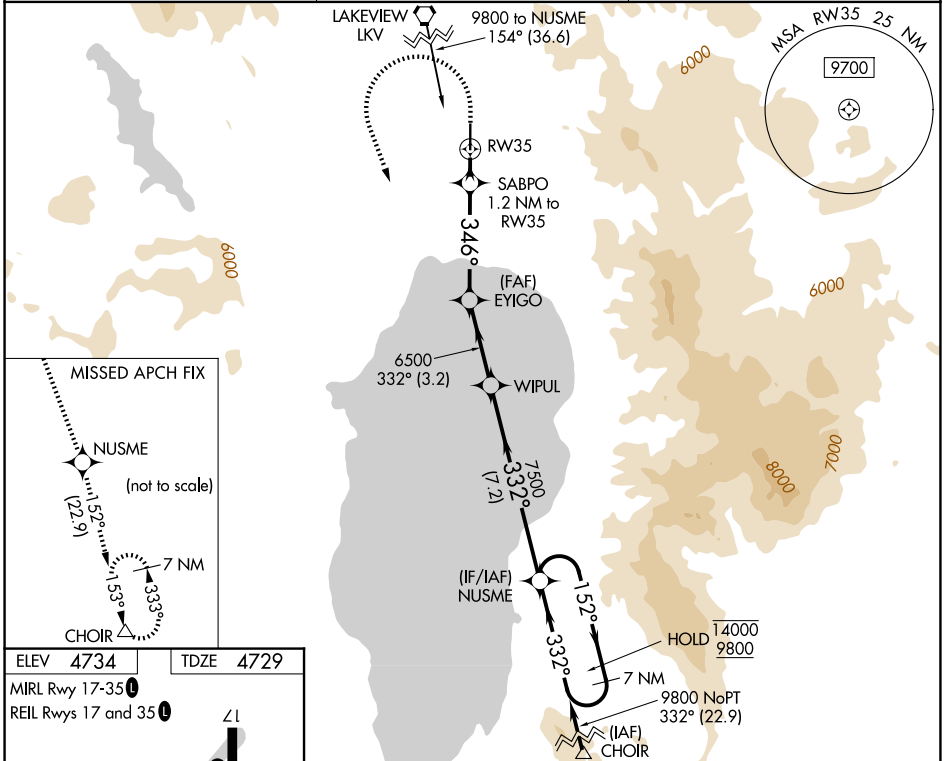
LAKE COUNTY (LKV)

RNP APCH. MISSED APPROACH: (Do not exceed 235K until NUSME) Climb to 5200 then climbing left turn to 11000 direct NUSME and on track 152° to CHOIR and hold.

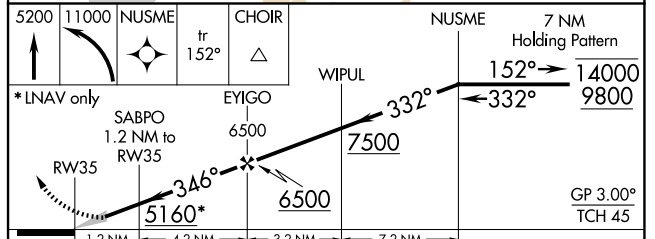
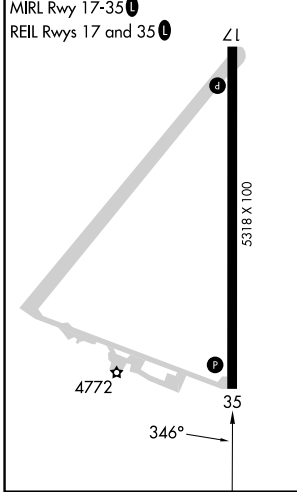
⚠ For uncompensated Baro-VNAV systems, LNAV/VNAV NA below -24°C or above 50°C. Circling NA east of Rwy 17-35.

⚠ -26°C

AWOS-3PT 135.525	SEATTLE CENTER 127.6 346.35	UNICOM 122.8 (CTAF) 0
----------------------------	---------------------------------------	---------------------------------



ELEV 4734	TDZE 4729
------------------	------------------



5200	11000	NUSME	tr 152°	CHOIR	NUSME	7 NM Holding Pattern
* LNAV only		SABPO 1.2 NM to RW35	EYIGO 6500	WIPUL 7500	152° → 14000	← 332° 9800
		RW35	5160*	6500	GP 3.00° TCH 45	
		1.2 NM	4.2 NM	3.2 NM	7.2 NM	
CATEGORY	A		B	C	D	
LPV DA	4979-1 250 (300-1)					
LNAV/ VNAV DA	5121-1½ 392 (400-1½)					
LNAV MDA	5080-1 351 (400-1)					
CIRCLING	5160-1 426 (500-1)	5220-1 486 (500-1)	5320-2 586 (600-2)	5480-2½ 746 (800-2½)		

NW-1, 19 MAR 2026 to 16 APR 2026

NW-1, 19 MAR 2026 to 16 APR 2026