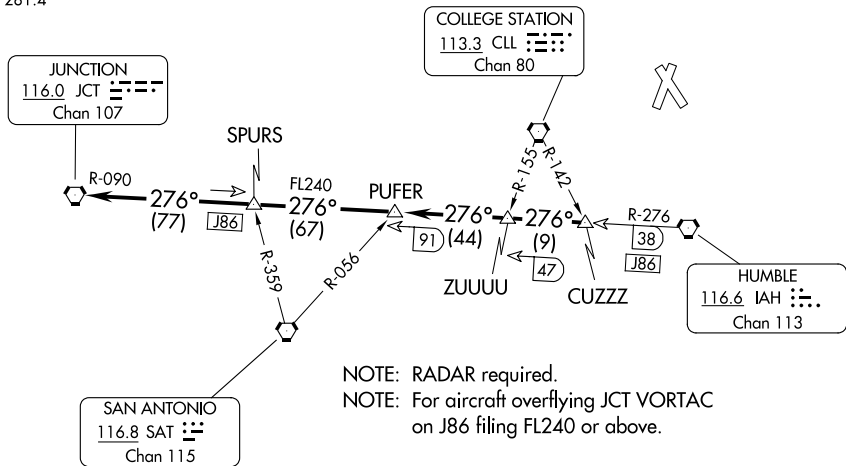


JUNCTION ONE DEPARTURE

**TOP ALTITUDE:
ASSIGNED BY ATC**

ATIS
118.325
CLNC DEL
120.45
CLNC DEL (when twr closed)
119.55
GND CON
120.45
CONROE TOWER *
124.125
HOUSTON DEP CON
119.7 281.4



NOTE: RADAR required.
NOTE: For aircraft overflying JCT VORTAC
on J86 filing FL240 or above.

TAKEOFF MINIMUMS
Rwys 1, 14, 19, 32: Standard.

NOTE: Chart not to scale.

DEPARTURE ROUTE DESCRIPTION

TAKEOFF ALL RUNWAYS: When entering controlled airspace, climb on assigned heading for RADAR vectors to CUZZZ INT. Maintain ATC assigned altitude. Expect filed altitude 10 minutes after departure, thence

. . . . on IAH R-276 and JCT R-090 to JCT VORTAC.