

RNAV-1 DME/DME/IRU or GPS.

RADAR required.

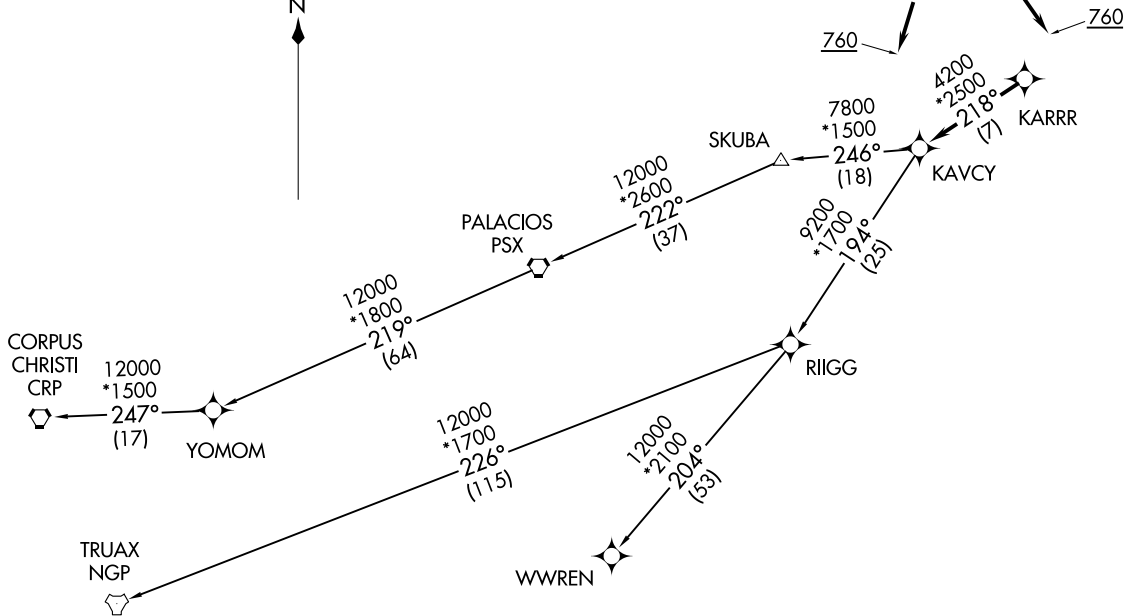
TAKEOFF MINIMUMS

Rwys 1, 14, 19, 32:

Standard with minimum climb of 500' per NM to 760.

**TOP ALTITUDE:
ASSIGNED BY ATC**

ATIS
118.325
CLNC DEL
120.45
CLNC DEL (when twr closed)
119.55
GND CON
120.45
CONROE TOWER *
124.125 (CTAF)
HOUSTON DEP CON
119.7 281.4



(NARRATIVE ON FOLLOWING PAGE)

NOTE: Chart not to scale.

KARRR SEVEN DEPARTURE (RNAV)
(KARRR7 .KARRR) 29DEC22

HOUSTON, TEXAS
CONROE/NORTH HOUSTON RGNL (CXO)

(KARRR7 .KARRR) 23222
KARRR SEVEN DEPARTURE (RNAV)

AL-5573 (FAA)
CONROE/NORTH HOUSTON RGNL (CXO)
HOUSTON, TEXAS

KARRR SEVEN DEPARTURE (RNAV)



DEPARTURE ROUTE DESCRIPTION

- TAKEOFF RUNWAY 1: Climb on heading 012° to 760, for RADAR vectors to KARRR, thence. . . .
- TAKEOFF RUNWAY 14: Climb on heading 140° to 760, for RADAR vectors to KARRR, thence. . . .
- TAKEOFF RUNWAY 19: Climb on heading 192° to 760, for RADAR vectors to KARRR, thence. . . .
- TAKEOFF RUNWAY 32: Climb on heading 320° to 760, for RADAR vectors to KARRR, thence. . . .

. . . .on track 218° to KAVCY, then on (transition). Maintain ATC assigned altitude. Expect filed altitude 10 minutes after departure.

- CORPUS CHRISTI TRANSITION (KARRR7.CRP)
- PALACIOS TRANSITION (KARRR7.PSX)
- TRUAX TRANSITION (KARRR7.NGP)
- WWREN TRANSITION (KARRR7.WWREN)
- YOMOM TRANSITION (KARRR7.YOMOM)

SC-5, 19 MAR 2026 to 16 APR 2026

SC-5, 19 MAR 2026 to 16 APR 2026