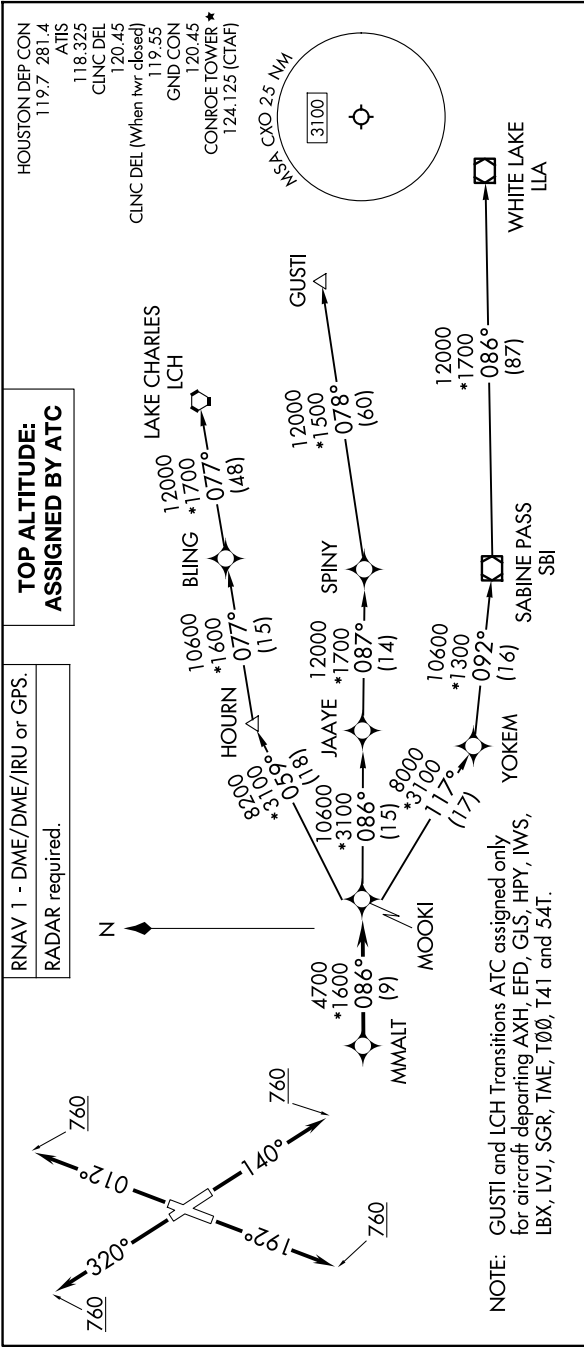


MMALT SEVEN DEPARTURE (RNAV)

SC-5, 19 MAR 2026 to 16 APR 2026



NOTE: GUSTI and LCH Transitions ATC assigned only for aircraft departing AXH, EFD, GLS, HPY, IWS, LBX, LVJ, SGR, TME, T00, T41 and 54T.

DEPARTURE ROUTE DESCRIPTION

- TAKEOFF RUNWAY 1: Climb on heading 012° to 760, for RADAR vectors to MMALT, thence. . . .
- TAKEOFF RUNWAY 14: Climb on heading 140° to 760, for RADAR vectors to MMALT, thence. . . .
- TAKEOFF RUNWAY 19: Climb on heading 192° to 760, for RADAR vectors to MMALT, thence. . . .
- TAKEOFF RUNWAY 32: Climb on heading 320° to 760, for RADAR vectors to MMALT, thence. . . .

. . . on track 086° to MOOKI, then on (transition). Maintain ATC assigned altitude. Expect filed altitude 10 minutes after departure.

TAKEOFF MINIMUMS
Rwys 1, 14, 19, 32: Standard with minimum climb of 500'/NM to 760.

NOTE: Chart not to scale.

SC-5, 19 MAR 2026 to 16 APR 2026