

WAAS CH <b>81927</b> <b>W07A</b>	APP CRS <b>073°</b>	Rwy Ldg TDZE Apt Elev	<b>4491</b> <b>730</b> <b>730</b>
--	------------------------	-----------------------------	---

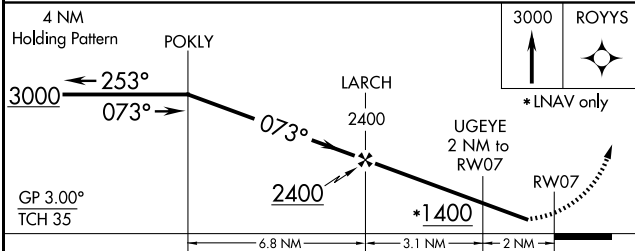
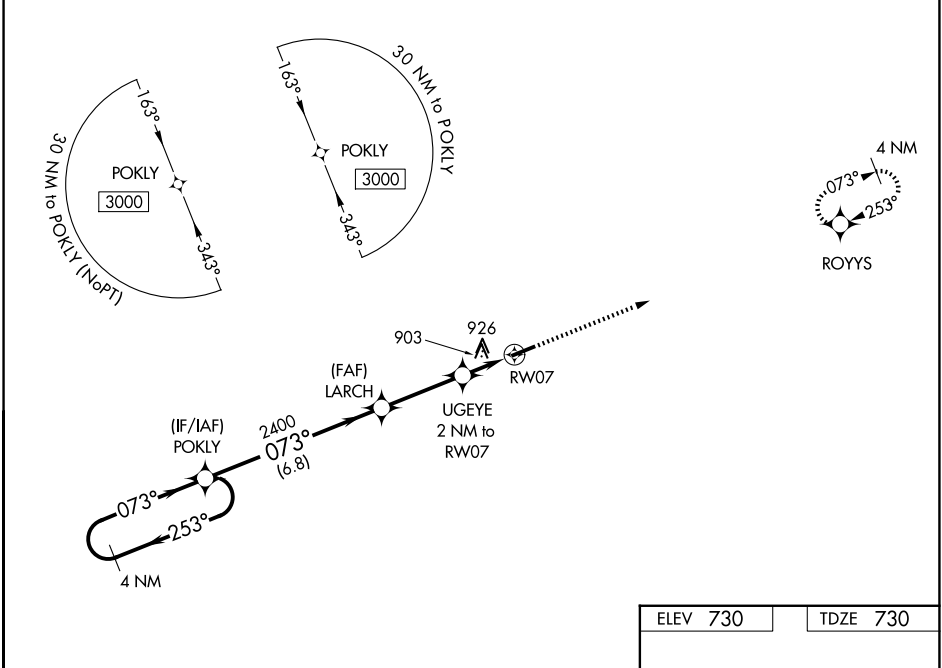
# RNAV (GPS) RWY 7

WILLIAMS COUNTY (ØG6)

**▼** Baro-VNAV NA. When VGSI inop, Straight-in/Circling Rwy 7 procedure NA at night.  
**▲NA** DME/DME RNP-0.3 NA. Visibility reduction by helicopters NA. Use Defiance Meml altimeter setting; when not received, use Auburn/Dekalb Exec altimeter setting: increase LPV DA to 1063 and all visibilities 1/8 SM, LNAV/VNAV DA to 1300 and all visibilities 1/4 SM; increase all MDAs 60 feet and LNAV and Circling visibility Cats C/D 1/4 SM.

**MISSED APPROACH:**  
Climb to 3000 direct ROYYS and hold.

DFI ASOS <b>121.425</b>	TOLEDO APP CON <b>134.35 307.0</b>	UNICOM <b>122.8 (CTAF)</b>	<b>123.0</b>
----------------------------	---------------------------------------	-------------------------------	--------------



ELEV 730	TDZE 730
3000	ROYYS
*LNAV only	
GP 3.00°	TCH 35
4782 X 75	
MIRL Rwy 7-25	REIL Rws 7 and 25

CATEGORY	A	B	C	D
LPV DA	1003-1		273 (300-1)	
LNAV/VNAV DA	1240-1 3/4		510 (600-1 3/4)	
LNAV MDA	1260-1	530 (600-1)	1260-1 1/2	530 (600-1 1/2)
CIRCLING	1300-1	570 (600-1)	1300-1 1/2	1520-2 1/2
			570 (600-1 1/2)	790 (800-2 1/2)

EC-2, 19 MAR 2026 to 16 APR 2026

EC-2, 19 MAR 2026 to 16 APR 2026