

12 JUN 25

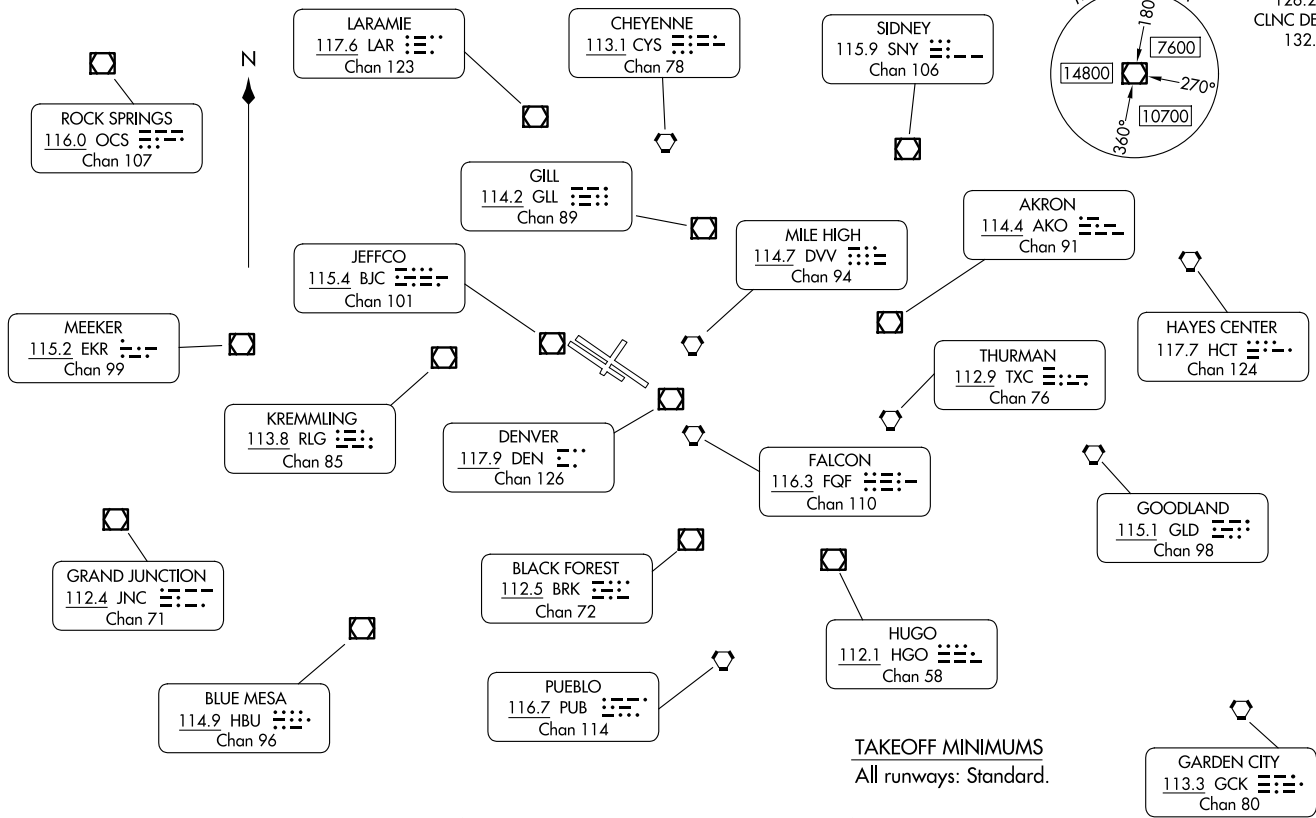
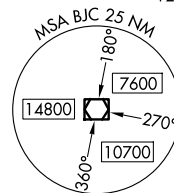
DENVER THREE DEPARTURE

DENVER, COLORADO
ROCKY MOUNTAIN METRO (BJC)

**TOP ALTITUDE:
ASSIGNED BY ATC.**

RADAR required.

DENVER DEP CON
125.125 263.025
ATIS
126.25
CLNC DEL
132.6



TAKEOFF MINIMUMS
All runways: Standard.

NOTE: Chart not to scale.

(CONTINUED ON FOLLOWING PAGE)

26022
DENVER THREE DEPARTURE
AL-9612 (FAA)
ROCKY MOUNTAIN METRO (BJC)
DENVER, COLORADO



DEPARTURE ROUTE DESCRIPTION

TAKEOFF RUNWAY 3: Climb to assigned altitude and heading between 350° CW 150° from DER, thence. . . .

TAKEOFF RUNWAYS 12L/R: Climb to assigned altitude and heading between 150° CCW 350° from DER, thence. . . .

TAKEOFF RUNWAY 21: Climbing left turn to assigned altitude and heading between 150° CCW to 024° from DER, thence. . . .

TAKEOFF RUNWAYS 30L/R: Climbing right turn to assigned altitude and heading between 350° CW 113° from DER, thence. . . .

. . . .RADAR vectors to assigned route. Expect filed altitude 10 minutes after departure.

LOST COMMUNICATIONS: If no transmissions are received within one minute after departure, maintain assigned heading until 7000, then climb to filed altitude direct to DEN VOR/DME, then on assigned route. If filed altitude is above 10000, cross DEN VOR/DME at or above 11000.

SW-1, 19 MAR 2026 to 16 APR 2026

SW-1, 19 MAR 2026 to 16 APR 2026