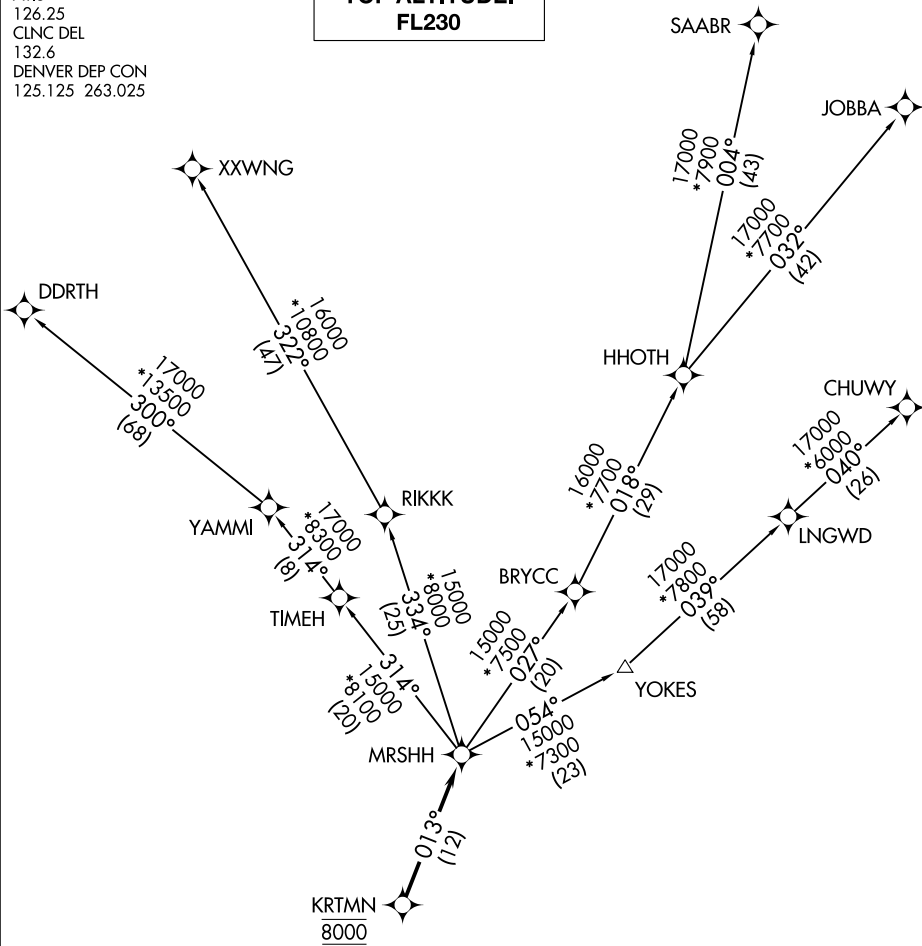


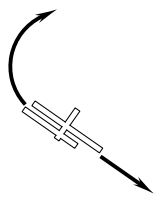
ATIS
126.25
CLNC DEL
132.6
DENVER DEP CON
125.125 263.025

**TOP ALTITUDE:
FL230**



SW-1, 19 MAR 2026 to 16 APR 2026

SW-1, 19 MAR 2026 to 16 APR 2026



TAKEOFF MINIMUMS

Rwys 3, 21: NA.
Rwys 12L/R, 30L/R: Standard.

- NOTE: DME/DME/IRU or GPS required.
- NOTE: RNAV 1.
- NOTE: Turbojets only.
- NOTE: RADAR required.

NOTE: Chart not to scale.

(NARRATIVE ON FOLLOWING PAGE)



DEPARTURE ROUTE DESCRIPTION

TAKEOFF RUNWAYS 12L/R: Climb on a heading between 350° CW 150° as assigned by ATC. Thence. . . .

TAKEOFF RUNWAYS 30L/R: Climbing right turn on a heading between 350° CW 113° as assigned by ATC. Thence. . . .

. . . .expect RADAR vectors to cross KRTMN at 8000 then on track 013° to MRSHH, then on (transition) maintain FL230 or filed lower altitude. Expect higher filed altitude ten minutes after departure.

CHUWY TRANSITION (MRSHH2.CHUWY)

DDRTH TRANSITION (MRSHH2.DDRTH)

JOBBA TRANSITION (MRSHH2.JOBBA)

SAABR TRANSITION (MRSHH2.SAABR)

XXWNG TRANSITION (MRSHH2.XXWNG)

SW-1, 19 MAR 2026 to 16 APR 2026

SW-1, 19 MAR 2026 to 16 APR 2026