

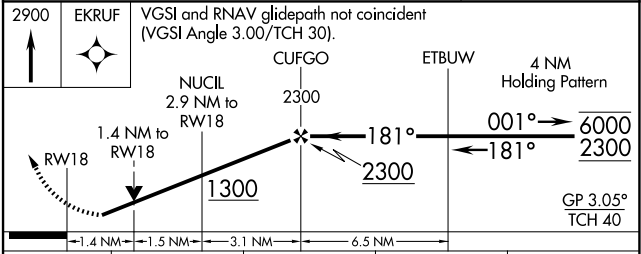
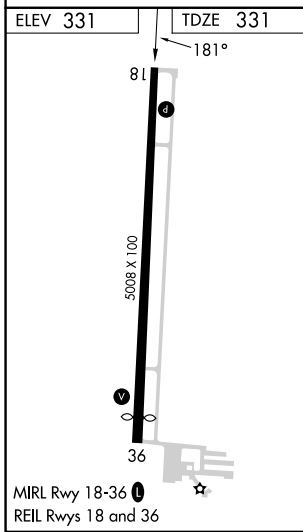
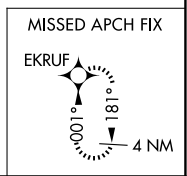
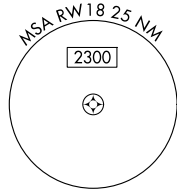
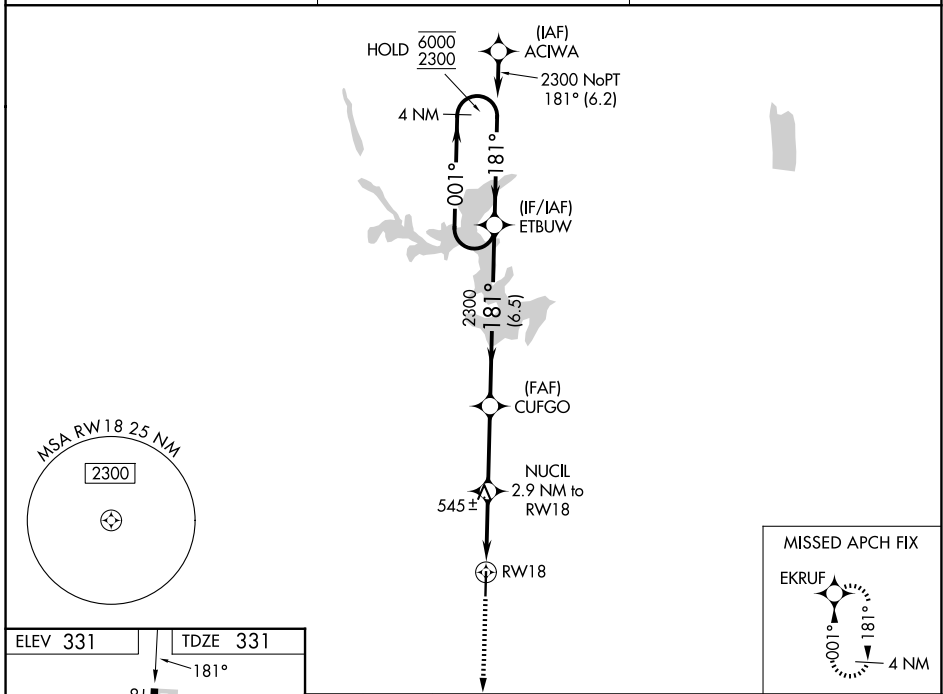
WAAS CH 97499 W18A	APP CRS 181°	Rwy Ldg 5008 TDZE 331 Apt Elev 331
--	------------------------	---

RNAV (GPS) RWY 18

POPLAR BLUFF RGNL BUSINESS (POI^F)

RNP APCH - GPS.	MISSED APPROACH: Climb to 2900 direct EKRU ^F and hold.
Rwy 18 helicopter visibility reduction below 3/4 SM NA. For uncompensated Baro-VNAV systems, LNAV/VNAV NA below -1.5°C or above 54°C.	

ASOS 124.225	MEMPHIS CENTER 120.075 289.4	UNICOM 123.0 (CTAF) 0
------------------------	--	---------------------------------



CATEGORY	A	B	C	D
LPV DA	634-7/8		303 (400-7/8)	
LNAV/VNAV DA	768-1 1/4		437 (500-1 1/4)	
LNAV MDA	800-1 469 (500-1)		800-1 3/8 469 (500-1 3/8)	
CIRCLING	840-1 509 (600-1)	920-1 589 (600-1)	920-1 1/2 589 (600-1 1/2)	980-2 649 (700-2)

NC-3, 19 MAR 2026 to 16 APR 2026

NC-3, 19 MAR 2026 to 16 APR 2026