

| | | | |
|--|------------------------|-----------------------------|---|
| WAAS CH 63225 W09A | APP CRS 092° | Rwy Ldg TDZE Apt Elev | 5505 915 925 |
|--|------------------------|-----------------------------|---|

RNAV (GPS) RWY 9

PORTLAND MUNI (PLD)

RNP APCH - GPS.

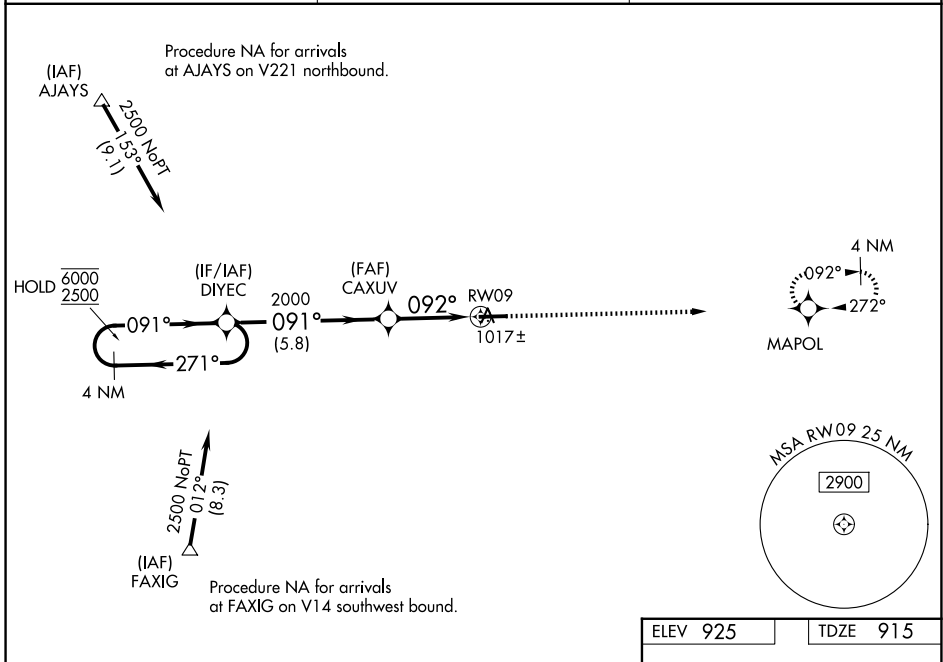
⚠ Circling to Rwy 27 NA at night. For uncompensated Baro-VNAV systems, LNAV/VNAV NA below -16°C or above 54°C.

MISSED APPROACH:
Climb to 3000 direct
MAPOL and hold.

AWOS-3
124.675

FORT WAYNE APP CON
132.15 (SE/NE) **284.6**
127.2 (SW/NW) **284.6**

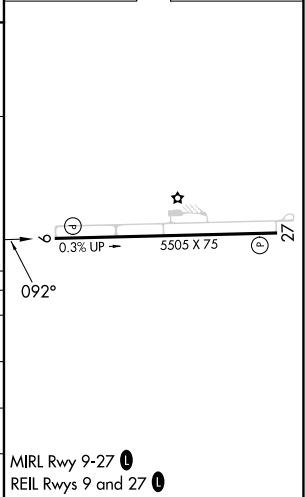
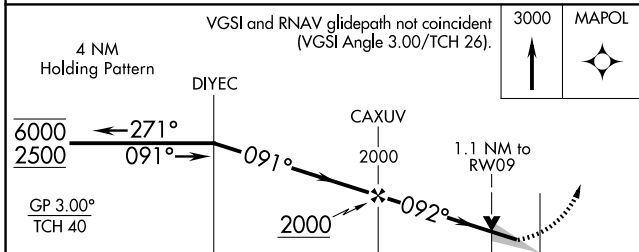
UNICOM
122.8 (CTAF) **0**



EC-2, 19 MAR 2026 to 16 APR 2026

EC-2, 19 MAR 2026 to 16 APR 2026

| | |
|----------|----------|
| ELEV 925 | TDZE 915 |
|----------|----------|



| CATEGORY | A | B | C | D |
|--------------|--------|-------------|-------------------------|-------------------------|
| LPV DA | | 1165-1 | 250 (300-1) | |
| LNAV/VNAV DA | | 1230-1 | 315 (400-1) | |
| LNAV MDA | | 1280-1 | 365 (400-1) | |
| CIRCLING | 1480-1 | 555 (600-1) | 1580-1¾ 655 (700-1¾) | 1640-2¼ 715 (800-2¼) |

MIRL Rwy 9-27 **0**
REIL Rwys 9 and 27 **0**