

WAAS CH 49219 W16A	APP CRS 160°	Rwy Ldg 5000 TDZE 573 Apt Elev 586
--	------------------------	---

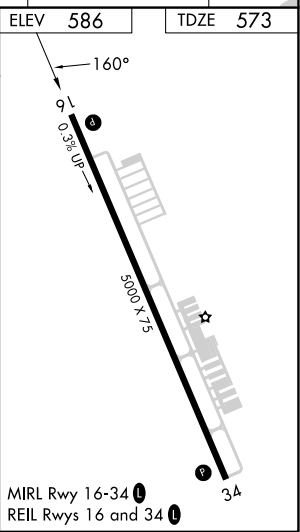
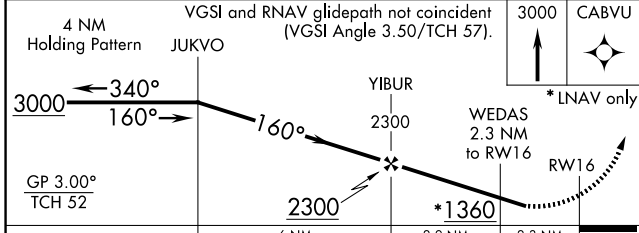
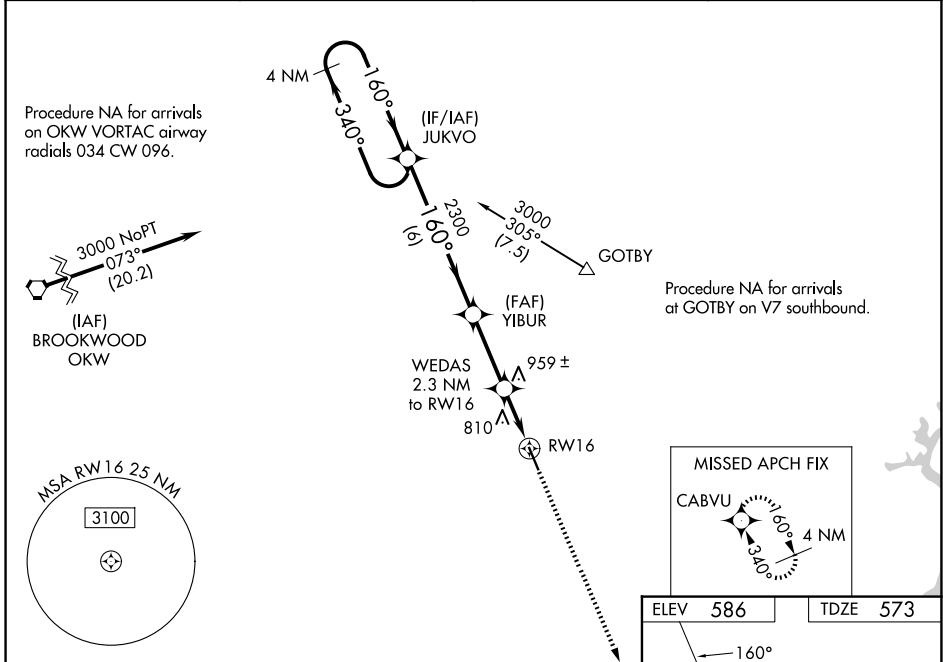
RNAV (GPS) RWY 16

SHELBY COUNTY (EET)

⚠ DME/DME RNP-0.3 NA. Visibility reduction by helicopters NA. When local altimeter setting not received, use Birmingham altimeter setting and increase all DA 63 feet and all MDA 80 feet; increase LPV all Cats, LNAV/VNAV all Cats and LNAV Cats C/D and Circling Cat C visibilities ¼ SM. Baro-VNAV NA when using Birmingham altimeter setting. For uncompensated Baro-VNAV systems, LNAV/VNAV NA below -16°C (4°F) or above 47°C (116°F).

MISSED APPROACH: Climb to 3000 direct CABVU and hold.

ASOS 134.325	BIRMINGHAM APP CON 123.8 256.8	CLNC DEL 121.725 (GCO)	UNICOM 122.7 (CTAF) 0
------------------------	--	----------------------------------	---------------------------------



CATEGORY	A	B	C	D
LPV DA	931-1¼ 358 (400-1¼)			
LNAV/VNAV DA	1176-2 603 (600-2)			
LNAV MDA	1220-1	647 (700-1)	1220-1¼ 647 (700-1¼)	1220-2 647 (700-2)
CIRCLING	1220-1	634 (700-1)	1340-2¼ 754 (800-2¼)	1580-3 994 (1000-3)

SE-4, 19 MAR 2026 to 16 APR 2026

SE-4, 19 MAR 2026 to 16 APR 2026