

WAAS CH 90238 W28A	APP CRS 281°	Rwy Ldg TDZE Apt Elev	4103 796 800
--	------------------------	-----------------------------	---

RNAV (GPS) RWY 28

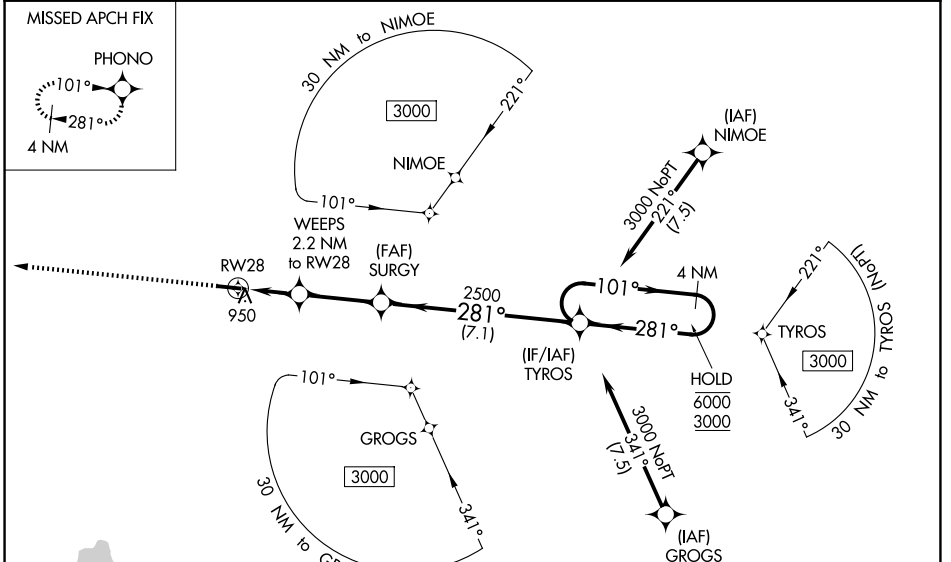
PLYMOUTH MUNI (C65)

RNP APCH - GPS.

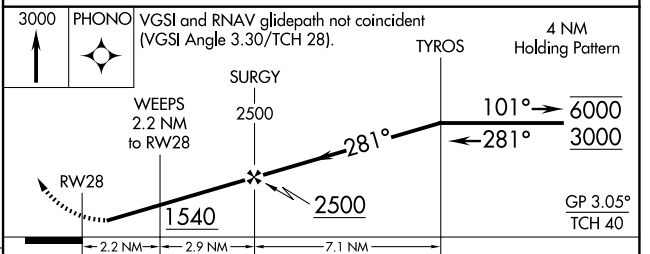
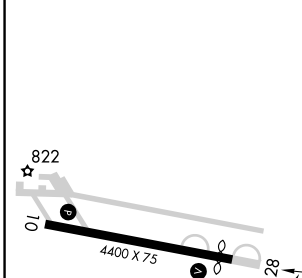
▼ Baro-VNAV NA when using South Bend altimeter setting. Rwy 28 helicopter visibility reduction below 1 SM NA. For uncompensated Baro-VNAV systems, LNAV/VNAV NA below -16°C or above 54°C. When local altimeter setting not received, use South Bend altimeter setting and increase LPV DA to 1154 feet and visibility all Cats ¼ SM; LNAV/VNAV DA to 1240 feet and visibility all Cats ¼ SM, increase all MDAs 60 feet and LNAV visibility Cat C ½ SM, and Circling visibility Cat C ¼ SM. Straight-in Rwy 28 NA at night, Circling Rwy 28 NA at night.

MISSED APPROACH: Climb to 3000 direct PHONO and hold.

AWOS-3 133.025	SOUTH BEND APP CON * 132.05 257.8	UNICOM 122.975 (CTAF) ①
--------------------------	---	-----------------------------------



ELEV 800	TDZE 796
----------	----------



CATEGORY	A	B	C	D
LPV DA	1103-1	307 (400-1)		NA
LNAV/VNAV DA	1189-1½	393 (400-1½)		NA
LNAV MDA	1260-1	464 (500-1)	1260-1⅜ 464 (500-1⅜)	NA
CIRCLING	1280-1 480 (500-1)	1360-1 560 (600-1)	1540-2 740 (800-2)	NA

MIRL Rwy 10-28 ①
REIL Rwy 10 and 28 ①

EC-2, 19 MAR 2026 to 16 APR 2026

EC-2, 19 MAR 2026 to 16 APR 2026