


LOC/DME I-JLS <b>110.3</b>	APP CRS <b>051°</b>	Rwy Ldg 5002
		TDZE 193
		Apt Elev 193

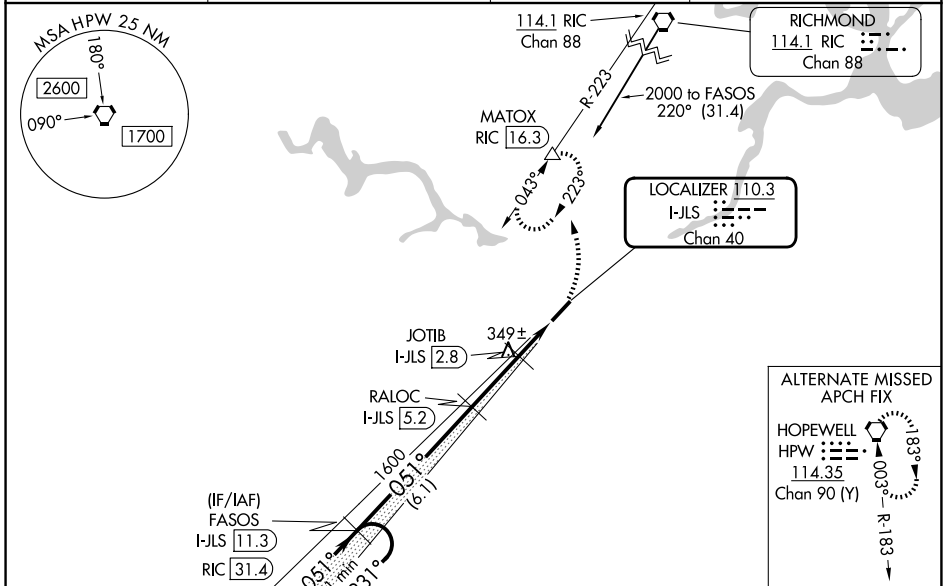
# LOC RWY 5

TRI CITIES EXEC/DINWIDDIE COUNTY (PTB)

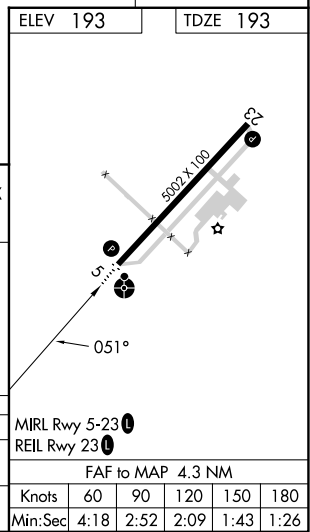
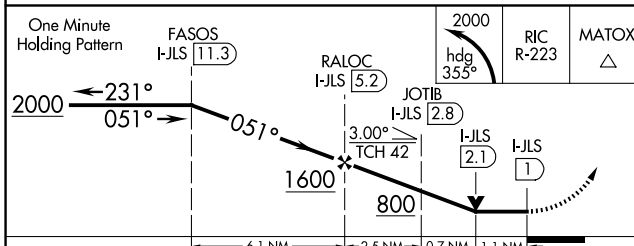
**⚠** **⚠** DME required. Helicopter visibility reduction below 3/4 SM NA. VDP NA when using Richmond Exec/Chesterfield County altimeter setting. When local altimeter setting not received, use Richmond Exec/Chesterfield County altimeter setting and increase all MDA 40 feet; increase S-LOC 5 Cat C visibility 1/8 mile and Circling Cat C visibility 1/4 mile. For inop ODALS, increase S-LOC 5 Cat C visibility to 1 1/8 mile. Inop table does not apply to S-LOC 5 Cat A and B. Inop table does not apply to S-LOC Cat A and B when using Richmond Exec/Chesterfield County altimeter setting.

**ODALS**  **MISSED APPROACH:** Climbing left turn to 2000 on heading 355° and on RIC VORTAC R-223 to MATOX/RIC 16.3 DME and hold.

AWOS-3 <b>133.325</b>	POTOMAC APP CON <b>126.75 307.2</b>	GCO <b>135.075</b>	UNICOM <b>122.7 (CTAF) 0</b>
--------------------------	--	-----------------------	---------------------------------



**DME REQUIRED**



CATEGORY	A	B	C	D
S-5	600-1	407 (500-1)		NA
CIRCLING	680-1	487 (500-1)	760-1 1/2 567 (600-1 1/2)	NA

# LOC RWY 5

NE-3, 19 MAR 2026 to 16 APR 2026

NE-3, 19 MAR 2026 to 16 APR 2026