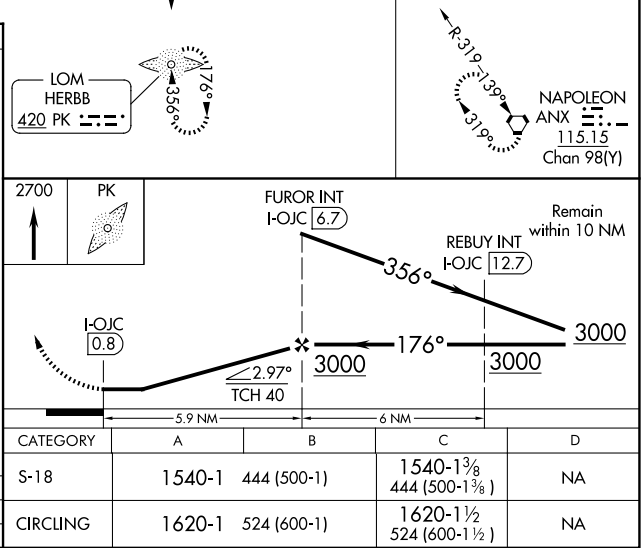
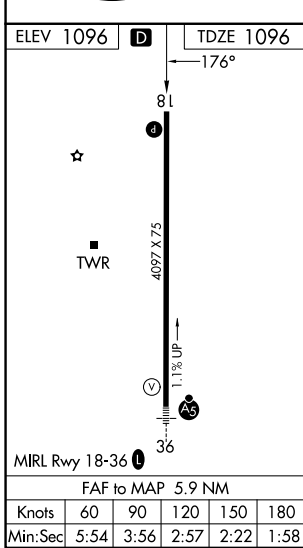
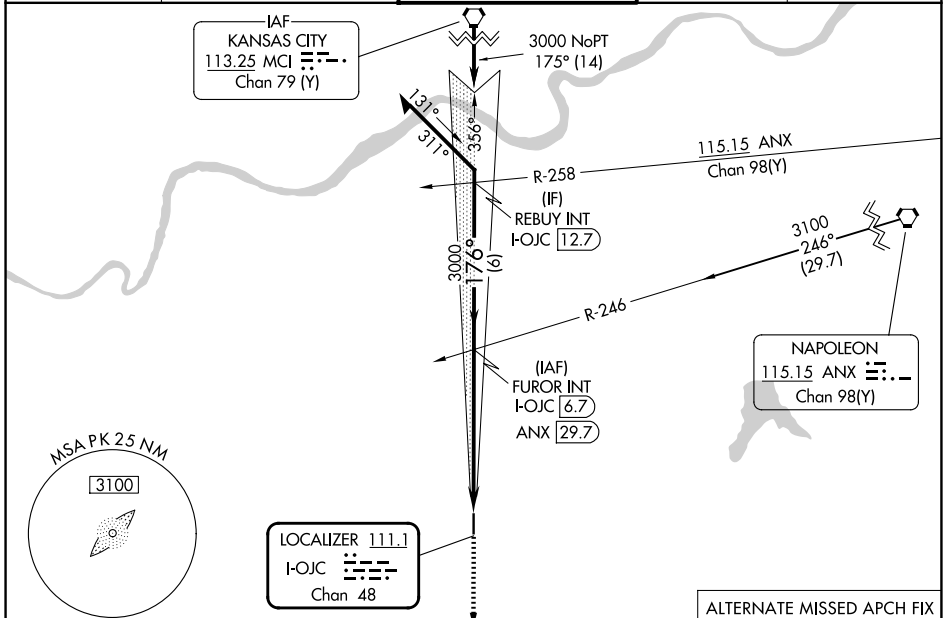


LOC/DME I-OJC 111.1 Chan 48	APP CRS 176°	Rwy Ldg TDZE Apt Elev	4097 1096 1096
---	------------------------	-----------------------------	---

LOC RWY 18
JOHNSON COUNTY EXEC (OJC)

ADF required.		MISSED APPROACH: Climb to 2700 direct HERBB LOM and hold.		
▽ ▲ NA				

ATIS 119.35	KANSAS CITY APP CON 118.9 251.075	EXECUTIVE TOWER * 126.0 (CTAF) 225.4	GND CON 121.6	UNICOM 122.95
-----------------------	---	--	-------------------------	-------------------------



NC-2, 19 MAR 2026 to 16 APR 2026

NC-2, 19 MAR 2026 to 16 APR 2026