

(TIFTO8.MCI) 23278

TIFTO EIGHT DEPARTURE

AL-5687 (FAA)


JOHNSON COUNTY EXEC (OJC)

OLATHE, KANSAS

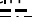
**TOP ALTITUDE:
10000**

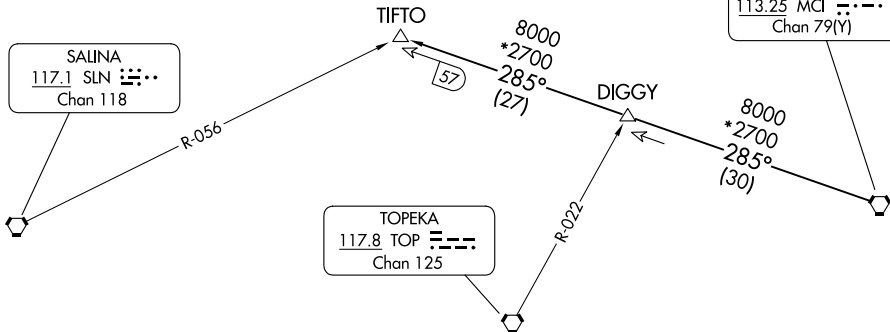
RADAR and DME required.

KANSAS CITY DEP CON
118.9 251.075
ATIS
119.35

SALINA
117.1 SLN 
Chan 118

TOPEKA
117.8 TOP 
Chan 125

KANSAS CITY
113.25 MCI 
Chan 79(Y)



NC-2, 19 MAR 2026 to 16 APR 2026

NC-2, 19 MAR 2026 to 16 APR 2026

TAKEOFF MINIMUMS
Rwys 18, 36: Standard.

NOTE: Chart not to scale



DEPARTURE ROUTE DESCRIPTION

TAKEOFF ALL RUNWAYS: Climb on assigned heading for RADAR vectors to appropriate route. Maintain 10000, expect filed altitude 10 minutes after departure.

TIFTO TRANSITION (TIFTO8.TIFTO): From over MCI VORTAC on MCI R-285 to TIFTO.

TIFTO EIGHT DEPARTURE

(TIFTO8.MCI) 05OCT23

OLATHE, KANSAS
JOHNSON COUNTY EXEC (OJC)