

| | | | |
|--|------------------------|-----------------------------|---|
| WAAS CH 99424 W23A | APP CRS 230° | Rwy Ldg TDZE Apt Elev | 5001 847 847 |
|--|------------------------|-----------------------------|---|

RNAV (GPS) RWY 23

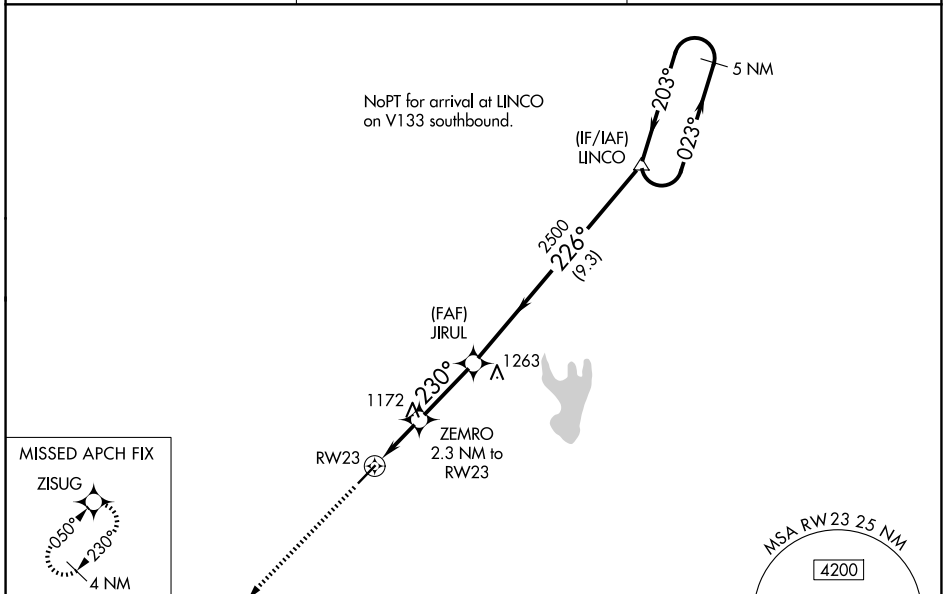
SHELBY-CLEVELAND COUNTY RGNL (EHO)

RNP APCH.

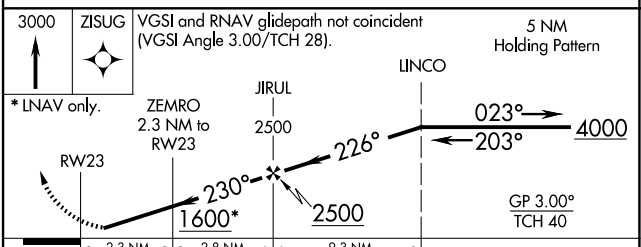
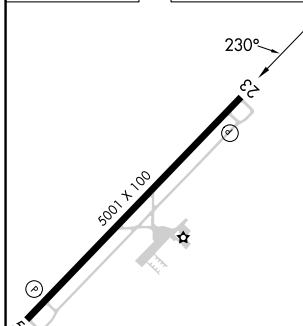
Baro-VNAV NA when using Charlotte altimeter setting. For uncompensated Baro-VNAV systems, LNAV/VNAV NA below -16°C or above 38°C. When local altimeter setting not received, use Charlotte altimeter setting and increase all DA 88 feet and all MDA 100 feet; increase LPV all Cats visibility 1/8 SM and LNAV/VNAV all Cats, LNAV Cat C/D visibility 1/4 SM.

MISSED APPROACH:
Climb to 3000 direct ZISUG and hold.

| | | |
|--------------------------|--|--|
| AWOS-3 118.425 | CHARLOTTE APP CON 120.05 257.2 | UNICOM 122.8 (CTAF) 1 |
|--------------------------|--|--|



| | |
|-----------------|-----------------|
| ELEV 847 | TDZE 847 |
|-----------------|-----------------|



| CATEGORY | A | B | C | D |
|--------------|--------|-------------|-------------|--------------|
| LPV DA | | 1097-1 | 250 (300-1) | |
| LNAV/VNAV DA | | 1123-1 | 276 (300-1) | |
| LNAV MDA | 1440-1 | 593 (600-1) | 1440-1¾ | 593 (600-1¾) |

SE-2, 19 MAR 2026 to 16 APR 2026

SE-2, 19 MAR 2026 to 16 APR 2026