

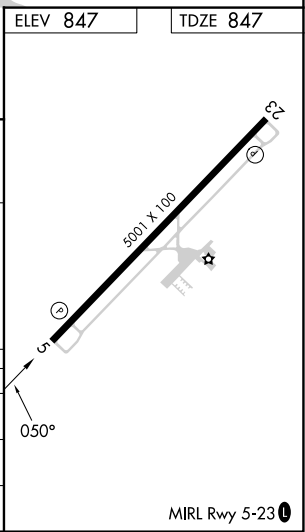
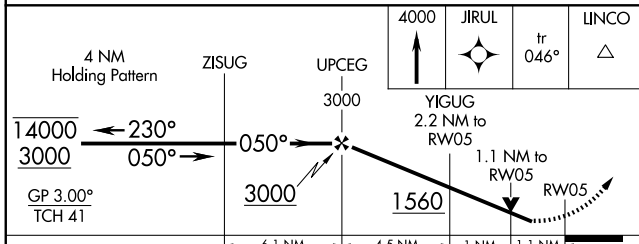
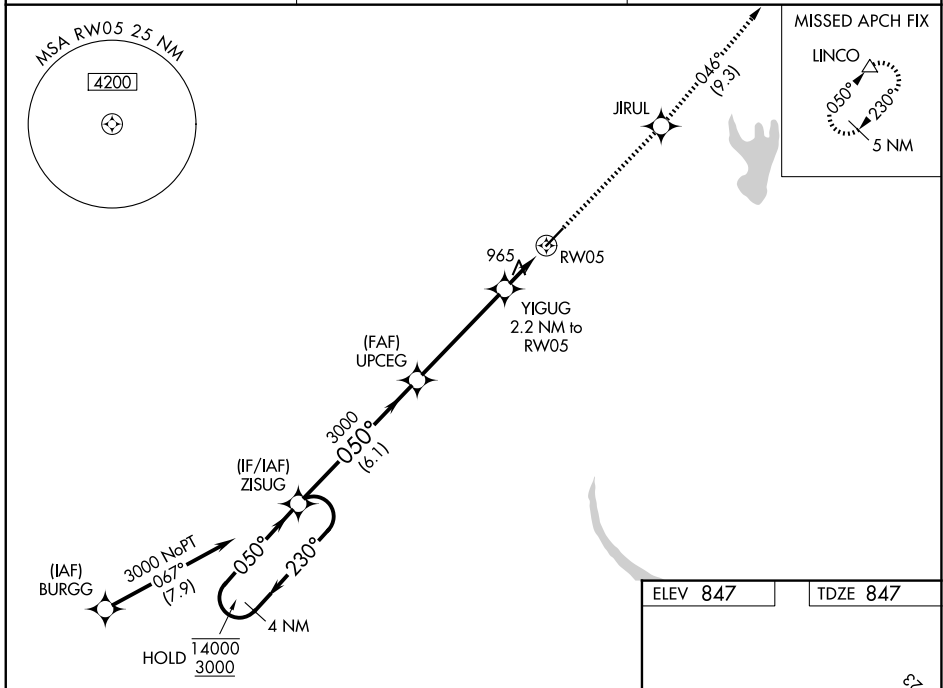
WAAS CH <b>63124</b> <b>W05A</b>	APP CRS <b>050°</b>	Rwy Ldg TDZE Apt Elev	<b>5001</b> <b>847</b> <b>847</b>
--	------------------------	-----------------------------	---

# RNAV (GPS) RWY 5

SHELBY-CLEVELAND COUNTY RGNL (EHO)

RNP APCH - GPS.	<p><b>▽</b> Rwy 5 helicopter visibility reduction below 3/4 SM NA. For uncompensated Baro-VNAV systems, LNAV/VNAV NA below -16°C or above 54°C. Baro-VNAV and VDP NA when using CLT altimeter setting. When local altimeter setting not received, use CLT altimeter setting and increase LPV DA to 1187 feet. Increase LNAV/VNAV DA to 1203 feet. Increase all MDAs 100 feet and LNAV visibility Cat C/D 1/4 SM.</p>	<p>MISSED APPROACH: Climb to 4000 direct JIRUL and on track 046° to LINCO and hold.</p>
-----------------	--	---

AWOS-3 <b>118.425</b>	CHARLOTTE APP CON <b>120.05 257.2</b>	UNICOM <b>122.8 (CTAF) 0</b>
--------------------------	--	---------------------------------



CATEGORY	A	B	C	D
LPV DA	1097-1		250 (300-1)	
LNAV/VNAV DA	1113-1		266 (300-1)	
LNAV MDA	1240-1 393 (400-1)		1240-1 1/8 393 (400-1 1/8)	

SE-2, 19 MAR 2026 to 16 APR 2026

SE-2, 19 MAR 2026 to 16 APR 2026

MIRL Rwy 5-23 0