

(DUNNN.DUNNN6) 17AR25

DUNNN SIX ARRIVAL (RNAV) Transition Routes

DENVER, COLORADO

See following page for Arrival Routes

DUNNN  
FL220  
FL190



4 NM

139°

14000  
\*8100  
302°  
(24)

14000  
\*8200  
319°  
(24)

XPAIN



12 NM

079°

14000  
\*8100  
259°  
(24)

MORSN  
FL300



FL180  
\*8100  
260°  
(61)

FRAAY



12 NM

126°

LAYLA



17000  
\*8200  
309°  
(45)

CAARS



RNAV 1 - DME/DME/IRU or GPS.  
RADAR required.

- DENVER CENTER 133.4 377.175
- SPRINGS APP CON 124.0 257.875
- DENVER APP CON 128.45 251.075
- APA ATIS 120.3
- BJC ATIS 126.25
- CENTENNIAL TOWER 118.9
- METRO TOWER \* 118.6 233.7

NOTE: Jet aircraft only.  
 NOTE: Expect runway assignment from DENVER TRACON upon initial contact.  
 NOTE: Aircraft landing BJC: ATC assigned only.

NOTE: Chart not to scale.

CAARS TRANSITION (CAARS.DUNNN6)  
FRAAY TRANSITION (FRAAY.DUNNN6)

(CONTINUED ON FOLLOWING PAGE)

(DUNNN.DUNNN6) 25107

AL-5715 (FAA) Transition Routes

DENVER, COLORADO

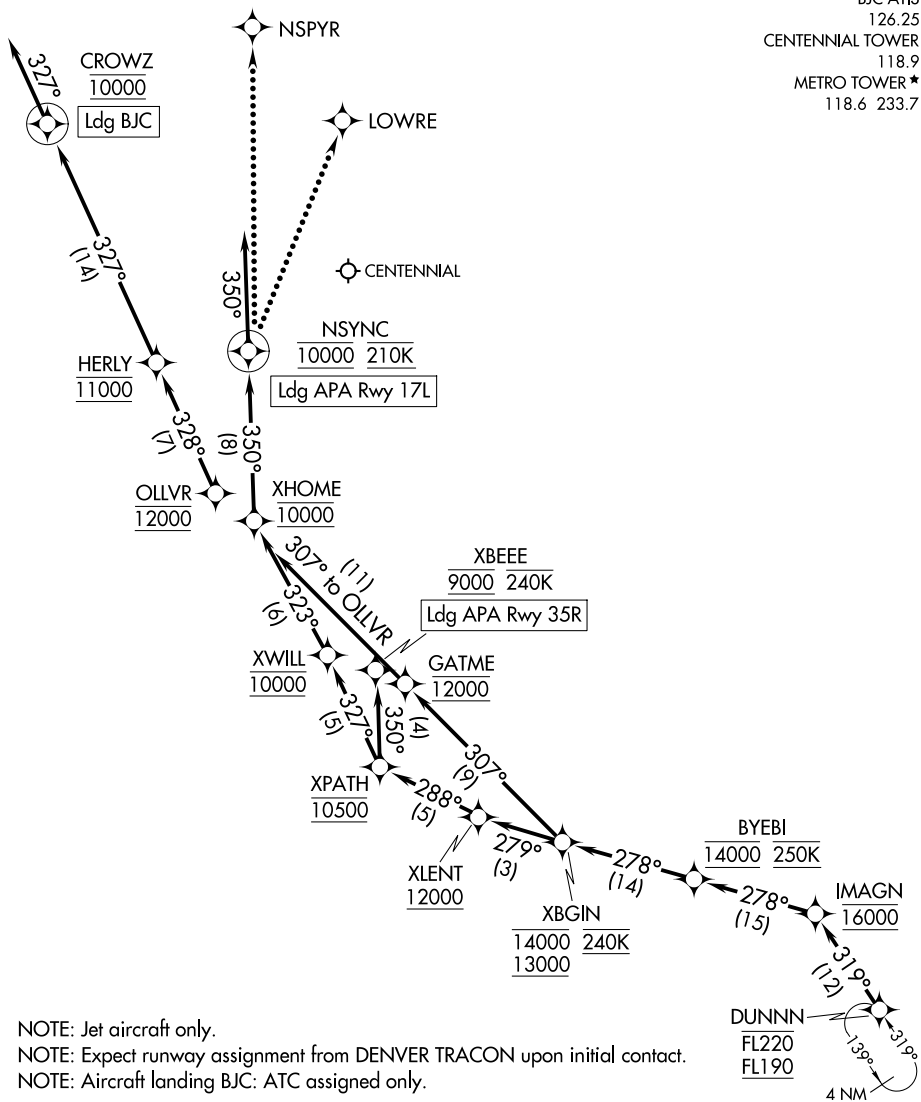
# DUNNN SIX ARRIVAL (RNAV) Arrival Routes

DENVER, COLORADO

ROCKY MOUNTAIN METRO

|                              |
|------------------------------|
| RNAV 1 - DME/DME/IRU or GPS. |
| RADAR required.              |

DENVER CENTER  
133.4 377.175  
SPRINGS APP CON  
124.0 257.875  
DENVER APP CON  
128.45 251.075  
APA ATIS  
120.3  
BJC ATIS  
126.25  
CENTENNIAL TOWER  
118.9  
METRO TOWER \*  
118.6 233.7



NOTE: Jet aircraft only.  
NOTE: Expect runway assignment from DENVER TRACON upon initial contact.  
NOTE: Aircraft landing BJC: ATC assigned only.

NOTE: Chart not to scale.

(CONTINUED ON FOLLOWING PAGE)

SW-1, 19 MAR 2026 to 16 APR 2026

SW-1, 19 MAR 2026 to 16 APR 2026

# DUNNN SIX ARRIVAL (RNAV) Arrival Routes

DENVER, COLORADO

ARRIVAL ROUTE DESCRIPTION

APA: From DUNNN on track 319° to cross IMAGN at 16000, then on track 278° to cross BYEBI at 14000 and at 250K.

LANDING APA RUNWAY 17L: From BYEBI on track 278° to cross XBGIN between 13000 and 14000 and at 240K, then on track 279° to cross XLENT at or above 12000, then on track 288° to cross XPATH at 10500, then on track 327° to cross XWILL at 10000, then on track 323° to cross XHOME at 10000, then on track 350° to cross NSYNC at 10000 and at 210K, then on track 350°. Expect RADAR vectors to final approach course.

LANDING APA RUNWAY 35R: From BYEBI on track 278° to cross XBGIN between 13000 and 14000 and at 240K, then on track 279° to cross XLENT at or above 12000, then on track 288° to cross XPATH at 10500, then on track 350° to cross XBEEE at 9000 and at or below 240K. Expect ILS or RNAV RWY 35 approach.

LANDING BJC: From DUNNN on track 319° to cross IMAGN at 16000, then on track 278° to cross BYEBI at 14000 and at 250K, then on track 278° to cross XBGIN between 13000 and 14000 and at 240K, then on track 307° to cross GATME at 12000, then on track 307° to cross OLLVR at 12000 then on track 328° to cross HERLY at 11000, then on track 327° to cross CROWZ at 10000, then on track 327°. Expect RADAR vectors to final approach course.

LOST COMMUNICATIONS

LANDING CENTENNIAL:

From over NSYNC- proceed to LOWRE and proceed on the RNAV (GPS) RWY 17L approach.

From over XBEEE- execute the RNAV (GPS) RWY 35R approach.

Non-GPS equipped aircraft- execute the ILS or LOC RWY 35R approach.

LANDING ROCKY MOUNTAIN METRO:

From over NSYNC- proceed to NSPYR and proceed on the ILS or LOC RWY 30R approach.

SW-1, 19 MAR 2026 to 16 APR 2026

SW-1, 19 MAR 2026 to 16 APR 2026