

PIKES THREE DEPARTURE

AL-571.5 (FAA)

CENTENNIAL (APA)
DENVER, COLORADO

DENVER DEP CON
132.75 269.3
ATIS
120.3
CLNC DEL
128.6

RADAR required.

DENVER
117.9 DEN Chan 126

**TOP ALTITUDE:
ASSIGNED BY ATC**

FALCON
116.3 FGF Chan 110

HUGO
112.1 HGO Chan 58

BLACK FOREST
112.5 BRK Chan 72

PUEBLO
116.7 PUB Chan 114

MOCA 14300
for ALAMOSA
Transition.

FL230
*14300
182°
(41)
JT3-44

ALAMOSA
113.9 ALS Chan 86

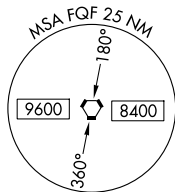
TAKEOFF MINIMUMS

Rwys 10, 35L/R: Standard.

Rwy 17L: Standard with minimum climb of 255'/NM to 8000.

Rwy 17R: Standard with minimum climb of 372'/NM to 8000.

Rwy 28: Standard with minimum climb of 300'/NM to 8000.



NOTE: Chart not to scale.

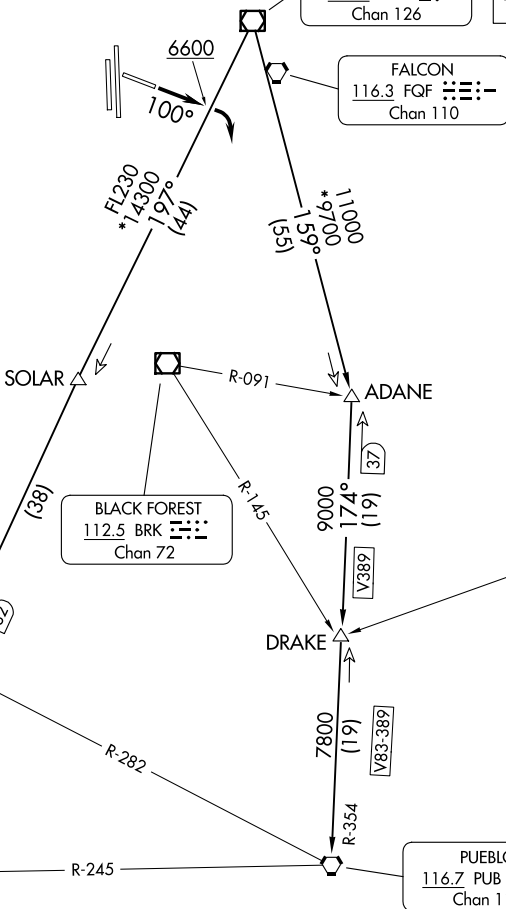
(CONTINUED ON FOLLOWING PAGE)

PIKES THREE DEPARTURE

DENVER, COLORADO
CENTENNIAL (APA)

SW-1, 19 MAR 2026 to 16 APR 2026

SW-1, 19 MAR 2026 to 16 APR 2026





DEPARTURE ROUTE DESCRIPTION

TAKEOFF RUNWAYS 17L/R, 28, 35L/R: Fly assigned heading and altitude for RADAR vectors to assigned route. Expect filed altitude 10 minutes after departure.

TAKEOFF RUNWAY 10: Climb on heading 100° to 6600 before turning right.

LOST COMMUNICATIONS: If no transmissions are received within one minute after departure, maintain assigned heading until 7000, then climb to filed altitude direct to DEN VOR/DME, then on assigned route. If filed altitude is above 10000, cross DEN VOR/DME at or above 11000.

ALAMOSA TRANSITION (PIKES3.ALS): From over DEN VOR/DME on DEN R-197 to TEHEV, then on ALS R-002 to ALS VORTAC.

BINKE TRANSITION (PIKES3.BINKE): From over DEN VOR/DME on DEN R-197 to TEHEV, then on ALS R-002 to BINKE.

PUEBLO TRANSITION (PIKES3.PUB): From over DEN VOR/DME on DEN R-159 to ADANE, then on PUB R-354 to PUB VORTAC.

SW-1, 19 MAR 2026 to 16 APR 2026

SW-1, 19 MAR 2026 to 16 APR 2026