

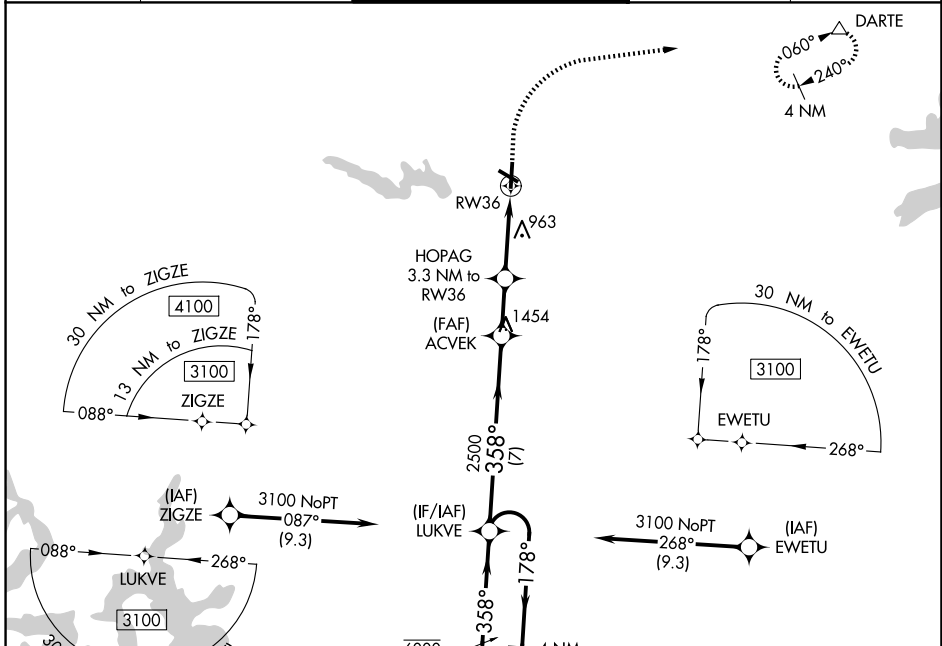
WAAS CH 72738 W36A	APP CRS 358°	Rwy Ldg TDZE Apt Elev	5004 765 790
--	------------------------	-----------------------------	---

RNAV (GPS) RWY 36

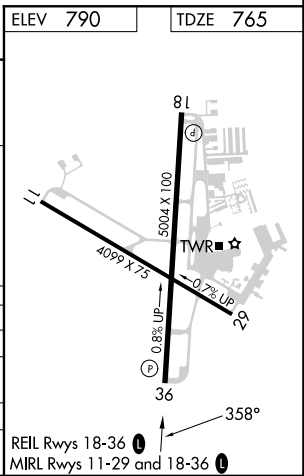
GEORGETOWN EXEC (GTU)

RNP APCH.		<p>▼ Circling Rwy 29 NA at night. Rwy 36 helicopter visibility reduction below 3/4 SM NA. ▲ For uncompensated Baro-VNAV systems, LNAV/VNAV NA below -16°C or above 54°C.</p>		
MISSED APPROACH: Climb to 1300 then climbing right turn to 3000 direct DARTE and hold.				

ATIS 118.6	AUSTIN APP CON 119.0 370.85	GEORGETOWN TOWER ★ 120.225 (CTAF) 0	GND CON 119.125	UNICOM 123.0
----------------------	---------------------------------------	---	---------------------------	------------------------



4 NM Holding Pattern		1300	3000	DARTE
LUKVE		ACVEK	HOPAG	*LNAV only.
6000 ← 178°	3100 → 358°	2500	3.3 NM to RW36	
GP 3.00°	TCH 50	*1840	*1.3 NM to RW36	
← 7 NM		2.1 NM	2 NM	1.3 NM
CATEGORY	A	B	C	D
LPV DA	1015-1		250 (300-1)	
LNAV/VNAV DA	1242-1½		477 (500-1½)	
LNAV MDA	1220-1	455 (500-1)	1220-1½	455 (500-1½)
CIRCLING	1240-1	1340-1	1360-1½	1640-2¾
	450 (500-1)	550 (600-1)	570 (600-1½)	850 (900-2¾)



SC-3, 19 MAR 2026 to 16 APR 2026

SC-3, 19 MAR 2026 to 16 APR 2026