

|             |          |             |
|-------------|----------|-------------|
| APP CRS     | Rwy Idg  | <b>3013</b> |
| <b>092°</b> | TDZE     | <b>197</b>  |
|             | Apt Elev | <b>197</b>  |

# RNAV (GPS) RWY 9

WETUMPKA MUNI (Ø8A)

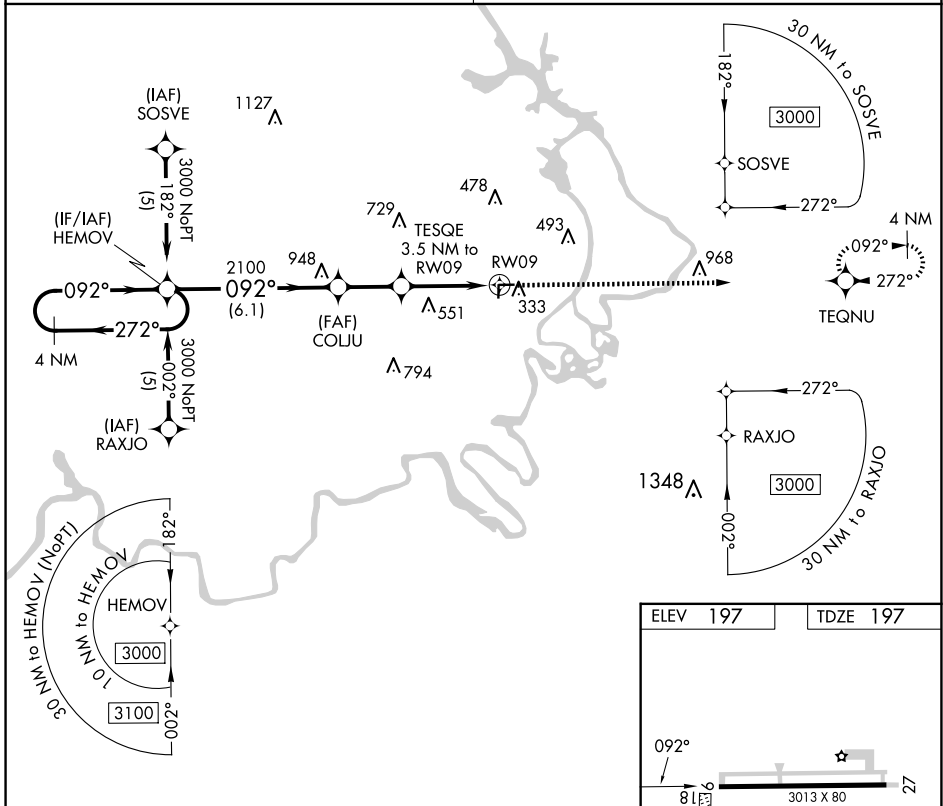
RNP APCH.

**NA** Rwy 9 helicopter visibility reduction below 1 SM NA. Procedure NA at night. Use Montgomery Rgnl (Dannelly Fld) altimeter setting; when not received, use Alexander City altimeter setting and increase all MDA 120 feet and increase LNAV Cat A visibility ¼ SM and LNAV Cat C visibility ½ SM.

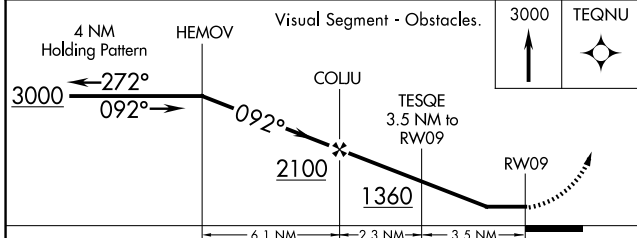
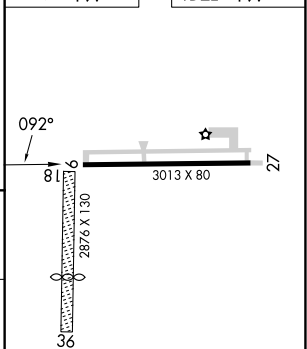
MISSED APPROACH: Climb to 3000 direct TEQNU and hold.

MONTGOMERY APP CON ★  
**121.2 269.05**

UNICOM  
**123.05 (CTAF) Ø**



|      |     |      |     |
|------|-----|------|-----|
| ELEV | 197 | TDZE | 197 |
|------|-----|------|-----|



| CATEGORY | A                     | B                       | C                       | D  |
|----------|-----------------------|-------------------------|-------------------------|----|
| LNAV MDA | 1000-1<br>803 (900-1) | 1000-1¼<br>803 (900-1¼) | 1000-2¼<br>803 (900-2¼) | NA |

REIL Rwy 9 and 27  
MIRL Rwy 9-27 Ø

SE-4, 19 MAR 2026 to 16 APR 2026

SE-4, 19 MAR 2026 to 16 APR 2026