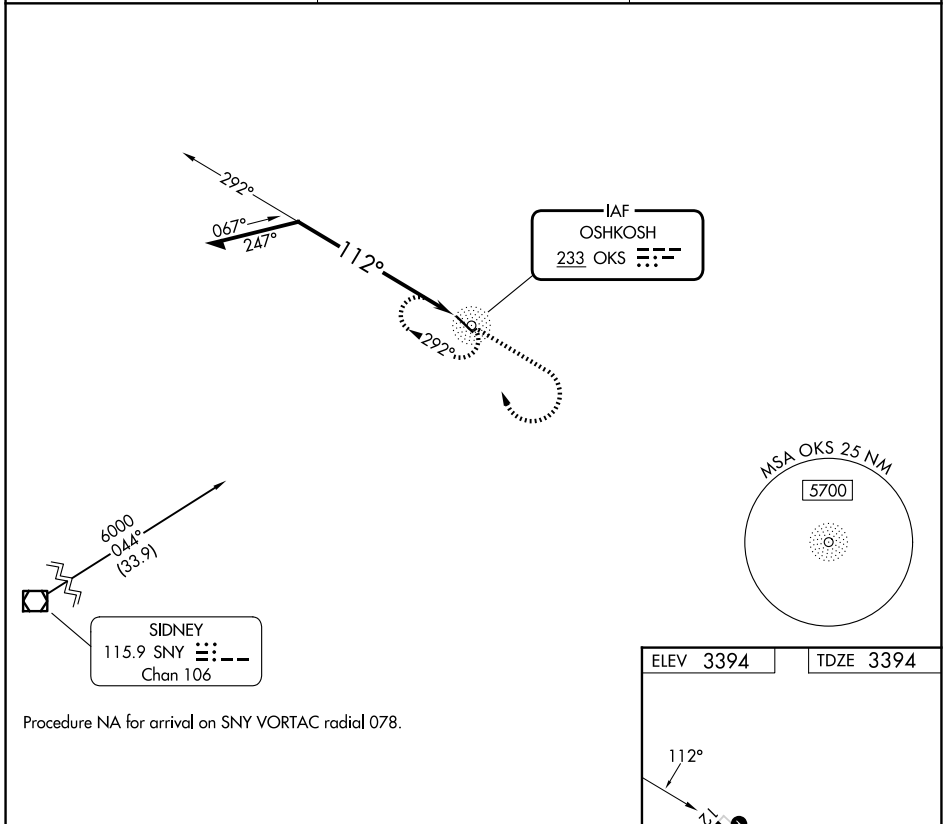


NDB OKS 233	APP CRS 112°	Rwy Ldg TDZE Apt Elev	4699 3394 3394
-----------------------	------------------------	-----------------------------	---

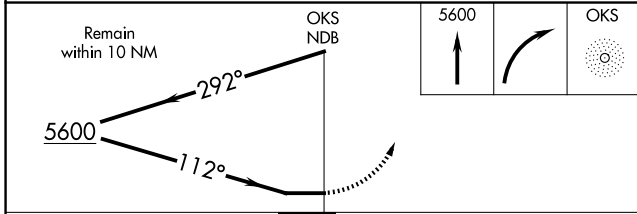
NDB RWY 12
GARDEN COUNTY/KING RHILEY FLD (OKS)

NA Rwy 12 helicopter visibility reduction below 3/4 SM NA. Use OGA altimeter setting. MISSED APPROACH: Climb to 5600 then right turn direct OKS NDB and hold.

OGA AWOS-3 121.275	DENVER CENTER 118.475 225.4	UNICOM 122.8 (CTAF)
------------------------------	---------------------------------------	-------------------------------



Procedure NA for arrival on SNY VORTAC radial 078.



ELEV 3394	TDZE 3394
-----------	-----------

MIRL Rwy 12-30
REIL Rwy 12 and 30

CATEGORY	A	B	C	D
S-12	4600-1¼ 1206 (1300-1¼)	4600-1½ 1206 (1300-1½)	NA	
CIRCLING	4600-1¼ 1206 (1300-1¼)	4600-1½ 1206 (1300-1½)	NA	

NC-2, 19 MAR 2026 to 16 APR 2026

NC-2, 19 MAR 2026 to 16 APR 2026