

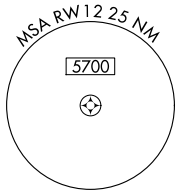
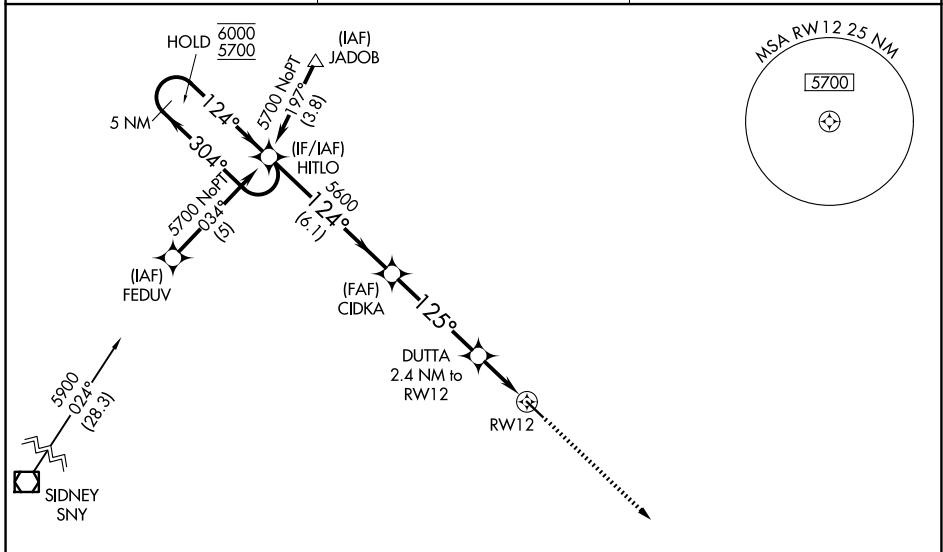
WAAS CH <b>99708</b> <b>W12A</b>	APP CRS <b>125°</b>	Rwy Ldg TDZE Apt Elev	<b>4699</b> <b>3394</b> <b>3394</b>
--	------------------------	-----------------------------	---

# RNAV (GPS) RWY 12

GARDEN COUNTY/KING RHILEY FLD (OKS)

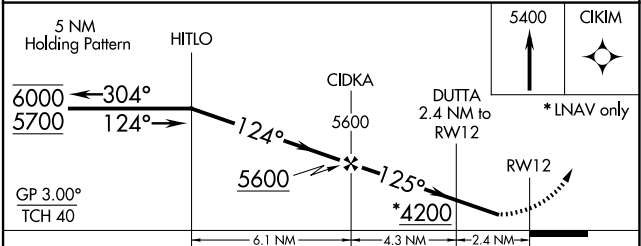
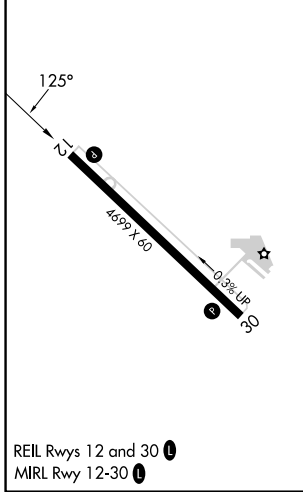
RNP APCH.	Baro-VNAV NA. Rwy 12 helicopter visibility reduction below 3/4 SM NA. Use Ogallala altimeter setting.	MISSED APPROACH: Climb to 5400 direct CIKIM and hold.
-----------	---	---

OGA AWOS-3 <b>121.275</b>	DENVER CENTER <b>118.475 225.4</b>	UNICOM <b>122.8 (CTAF) 0</b>
------------------------------	---------------------------------------	---------------------------------



Procedure NA for arrivals at SNY VOR/DME on V6 westbound.

ELEV 3394	TDZE 3394
-----------	-----------



CATEGORY	A	B	C	D
LPV DA	3762-1¼	368 (400-1¼)		NA
LNAV/VNAV DA	3882-1¾	488 (500-1¾)		NA
LNAV MDA	3980-1	586 (600-1)		NA
CIRCLING	3980-1 586 (600-1)	4180-1 786 (800-1)		NA

OSHKOSH, NEBRASKA  
Amdt 2C 02DEC21

GARDEN COUNTY/KING RHILEY FLD (OKS)  
41°24'N-102°21'W  
**RNAV (GPS) RWY 12**

NC-2, 19 MAR 2026 to 16 APR 2026

NC-2, 19 MAR 2026 to 16 APR 2026