

WAAS CH <b>50420</b> <b>W30A</b>	APP CRS <b>297°</b>	Rwy Idg TDZE Apt Elev	<b>3428</b> <b>939</b> <b>940</b>
--	------------------------	-----------------------------	---

# RNAV (GPS) RWY 30

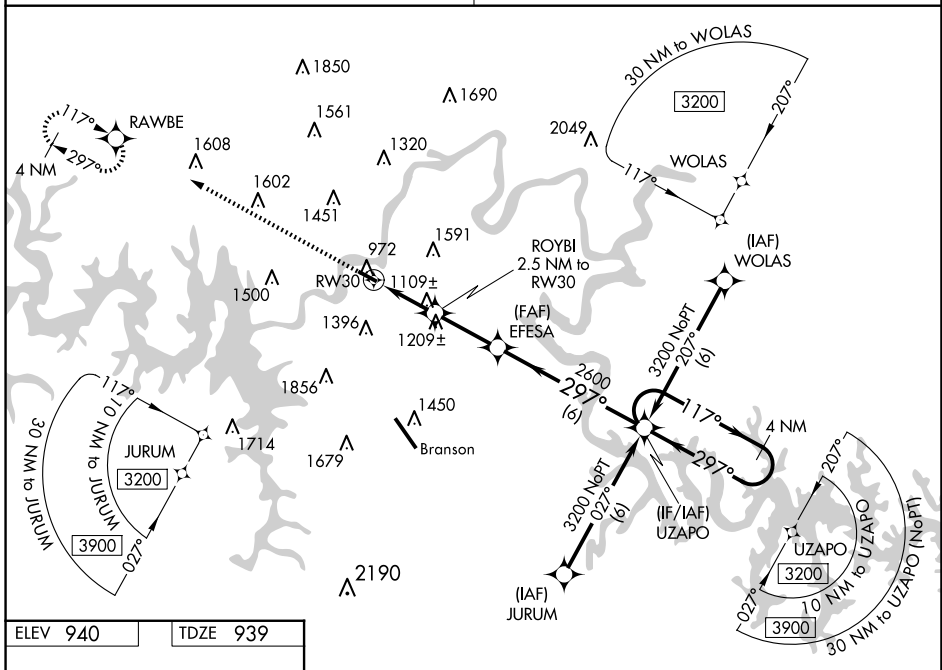
M GRAHAM CLARK DOWNTOWN (PLK)

**▼** Baro-VNAV NA when using Branson altimeter setting. For uncompensated Baro-VNAV systems, LNAV/VNAV NA below -16°C (4°F) or above 54°C (130°F). DME/DME RNP-0.3 NA. VDP NA with KBBG altimeter setting. Obtain local altimeter setting on CTAF; when not received, use Branson altimeter setting and increase all DA 65 feet and all MDA 80 feet; increase LPV and LNAV/VNAV all Cats visibility 1/4 mile.

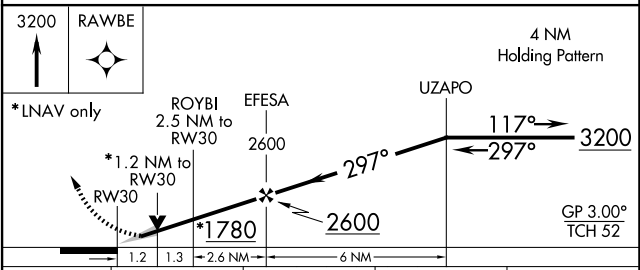
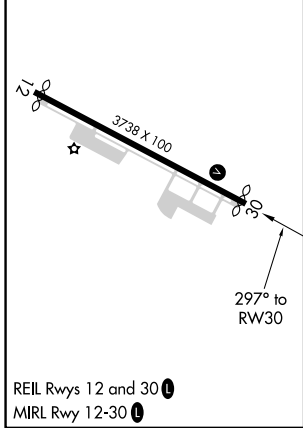
**MISSED APPROACH:**  
Climb to 3200 direct RAWBE and hold.

SPRINGFIELD APP CON  
**126.35**

UNICOM  
**122.7 (CTAF) 0**



ELEV 940	TDZE 939
----------	----------



CATEGORY	A	B	C	D
LPV DA	1189-3/4	250 (300-3/4)		NA
LNAV/VNAV DA	1224-7/8	285 (300-7/8)		NA
LNAV MDA	1360-1	421 (500-1)		NA
CIRCLING	1560-1	620 (700-1)		NA

NC-3, 19 MAR 2026 to 16 APR 2026

NC-3, 19 MAR 2026 to 16 APR 2026