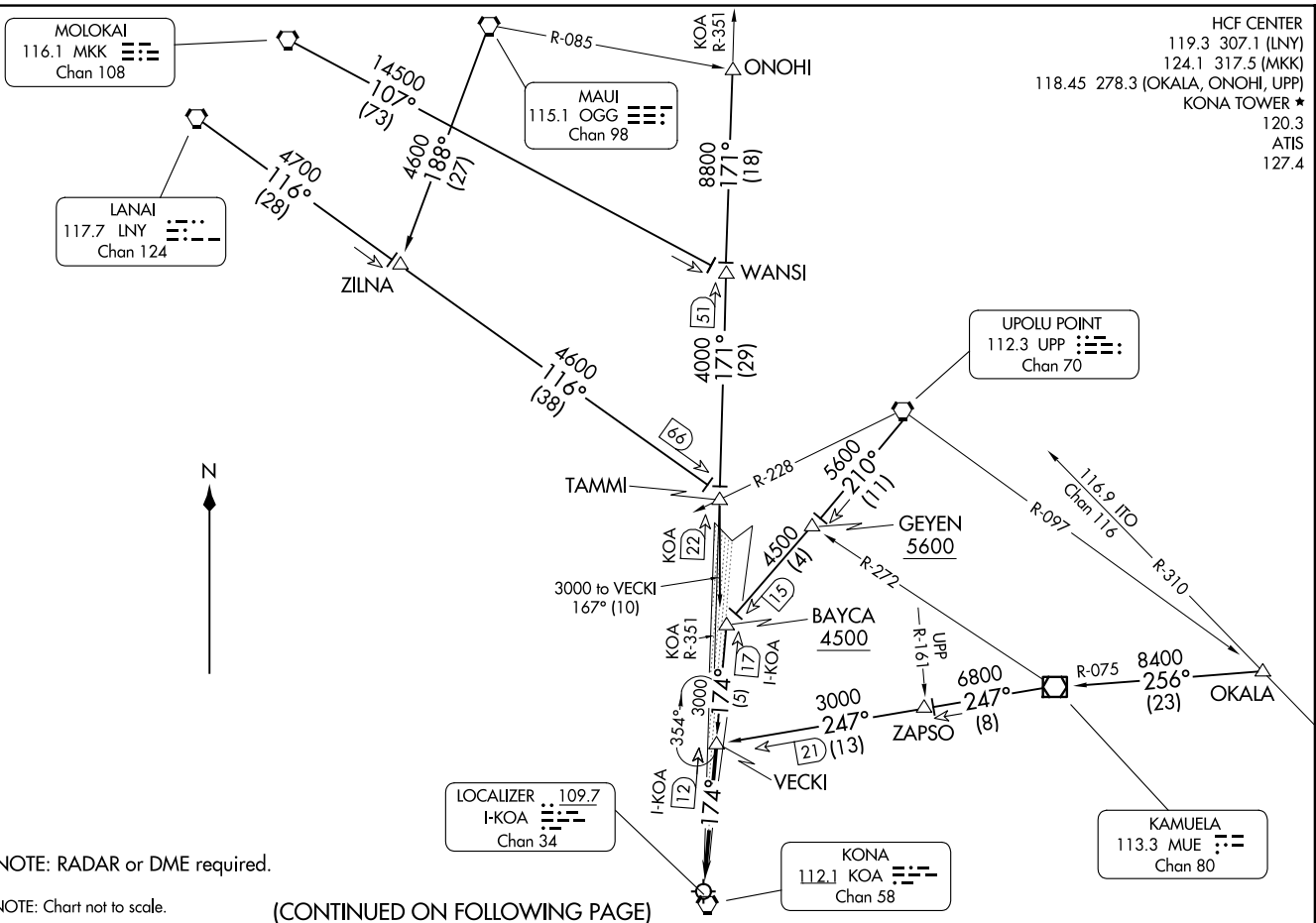


(VECKI, VECKI9) 24025
VECKI NINE ARRIVAL

ELIISON ONIZUKA KONA INTL AT KEAHOLE (KOA) (PHKO)
KAILUA/KONA, HAWAII
AL-5761 (FAA)

HCF CENTER
119.3 307.1 (LNY)
124.1 317.5 (MKK)
118.45 278.3 (OKALA, ONOHI, UPP)
KONA TOWER ★
120.3
ATIS
127.4



VECKI NINE ARRIVAL
(VECKI, VECKI9) 07DEC17

ELIISON ONIZUKA KONA INTL AT KEAHOLE (KOA) (PHKO)
KAILUA/KONA, HAWAII

NOTE: RADAR or DME required.

NOTE: Chart not to scale.

(CONTINUED ON FOLLOWING PAGE)

VECKI NINE ARRIVAL

ARRIVAL ROUTE DESCRIPTION

LANAI TRANSITION (LNY.VECKI9): From over LNY VORTAC on LNY R-116 to TAMMI , then on heading 167° to VECKI . Thence

MAUI TRANSITION (OGG.VECKI9): From over OGG VORTAC on OGG R-188 to ZILNA , then on LNY R-116 to TAMMI , then on heading 167° to VECKI . Thence

MOLOKAI TRANSITION (MKK.VECKI9): From over MKK VORTAC on MKK R-107 to WANSI , then on KOA R-351 to TAMMI , then on heading 167° to VECKI . Thence

OKALA TRANSITION (OKALA.VECKI9): From over OKALA on MUE VOR/DME R-075 to MUE VOR/DME, then on MUE R-247 to VECKI . Thence

ONOHI TRANSITION (ONOHI.VECKI9): From over ONOHI on KOA R-351 to TAMMI , then on heading 167° to VECKI . Thence

UPOLU POINT TRANSITION (UPP.VECKI9): From over UPP VORTAC on UPP R-210 to BAYCA , then on I-KOA 174° course to VECKI . Thence

. . . . from over VECKI INT on I-KOA localizer course to Ellison Onizuka Kona Intl at Keahole.

LOST COMMUNICATIONS: At VECKI INT proceed with ILS or LOC/DME RWY 17 approach.

PAC: 19 MAR 2026 to 14 MAY 2026

PAC: 19 MAR 2026 to 14 MAY 2026