


LOC I-BPM 111.9	APP CRS 133°	Rwy Ldg TDZE Apt Elev	7000 1031 1031
---------------------------	------------------------	-----------------------------	---

ILS or LOC RWY 13

ST CLOUD SKY CENTRAL (STC)

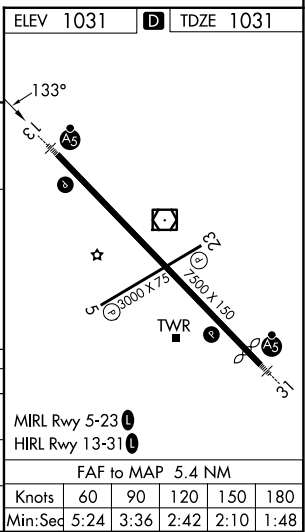
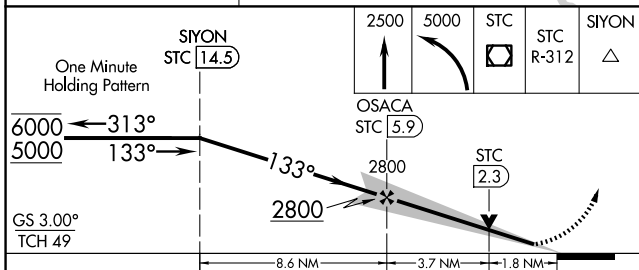
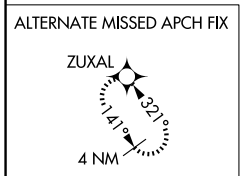
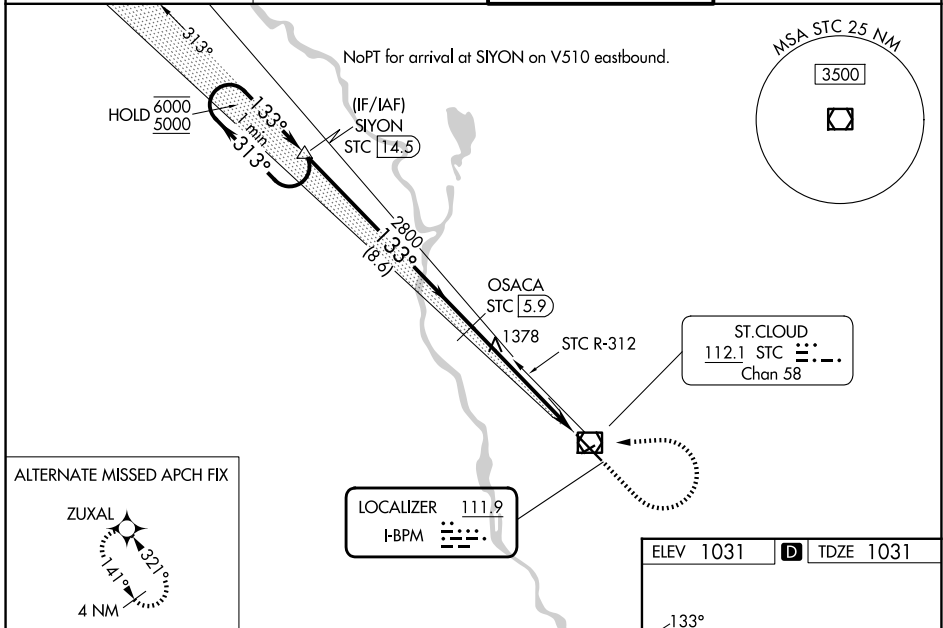
DME required.

⚠ For inop ALS when using Little Falls altimeter setting, increase S-ILS-13 all Cats visibility to 7/8 SM. When local altimeter setting not received, use Little Falls altimeter setting, increase DA to 1307 feet; increase all MDAs 80 feet and S-LOC 13 visibility Cats C and D 1/4 SM, and Circling visibility Cats C and D 1/4 SM. For inop ALS, increase S-LOC 13 Cats C and D visibility to 1 3/4 SM. DME from STC VOR/DME. DME use requires simultaneous reception of I-BPM and STC DME. VDP NA when using Little Falls altimeter setting.

MALSR 

MISSED APPROACH: Climb to 2500 then climbing left turn to 5000 direct STC VOR/DME and on STC VOR/DME R-312 to SIYON/STC 14.5 DME and hold.

ATIS 119.375	MINNEAPOLIS CENTER 121.05 235.775	ST. CLOUD TOWER ★ 118.25 (CTAF) 0	GND CON 123.75
------------------------	---	---	--------------------------



CATEGORY	A	B	C	D
S-ILS 13	1231-1/2		200 (200-1/2)	
S-LOC 13	1640-1/2 609 (700-1/2)		1640-1 3/8 609 (700-1 3/8)	
CIRCLING	1640-1 609 (700-1)		1640-1 3/4 609 (700-1 3/4) 829 (900-2 3/4)	

MIRL Rwy 5-23 0	HIRL Rwy 13-31 0				
FAF to MAP 5.4 NM					
Knots	60	90	120	150	180
Min:Sec	5:24	3:36	2:42	2:10	1:48

NC-1, 19 MAR 2026 to 16 APR 2026

NC-1, 19 MAR 2026 to 16 APR 2026