

WAAS CH <b>82013</b> <b>W13A</b>	APP CRS <b>133°</b>	Rwy Ldg TDZE Apt Elev	<b>7000</b> <b>1031</b> <b>1031</b>
--	------------------------	-----------------------------	---

# RNAV (GPS) RWY 13

ST CLOUD SKY CENTRAL (STC)

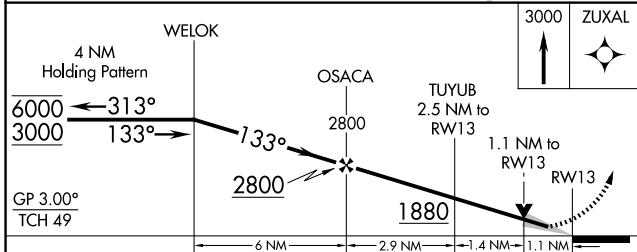
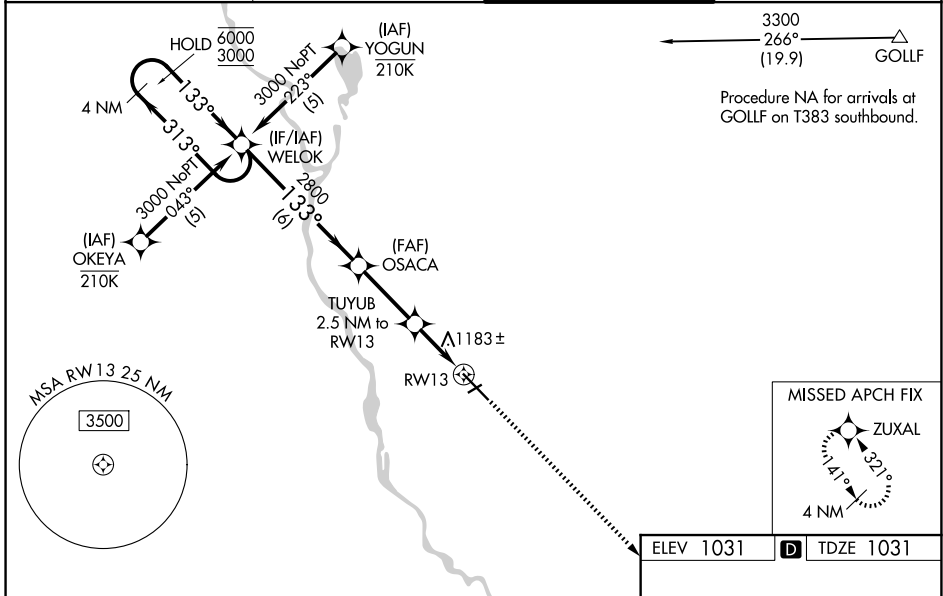
RNP APCH - GPS.

**⚠** Baro-VNAV and VDP NA when using Little Falls altimeter setting. For uncompensated Baro-VNAV systems, LNAV/VNAV NA below -21°C or above 54°C. When local altimeter setting not received, use Little Falls altimeter setting, increase LPV DA to 1307 feet; increase LNAV/VNAV DA to 1516 feet and all visibilities ¼ SM; increase all MDAs 80 feet and LNAV visibility Cat C and D ¼ SM, and Circling visibility Cat C and D ¼ SM. For inop ALS, increase LNAV/VNAV visibility all Cats and LNAV Cat C and D visibility to 1½ SM. When local altimeter not received and ALS inop, increase LPV visibility all Cats to ¾ SM, LNAV/VNAV visibility all Cats and LNAV Cat C and D to 1¾ SM.

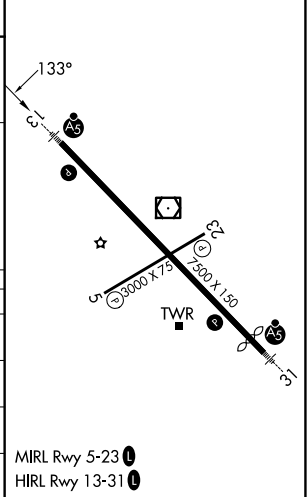


MISSED APPROACH:  
Climb to 3000 direct ZUXAL and hold.

ATIS <b>119.375</b>	MINNEAPOLIS CENTER <b>121.05 235.775</b>	ST. CLOUD TOWER ★ <b>118.25 (CTAF) 0</b>	GND CON <b>123.75</b>
------------------------	---	---	--------------------------



ELEV 1031	<b>D</b> TDZE 1031
-----------	--------------------



CATEGORY	A	B	C	D
LPV DA		1231-½	200 (200-½)	
LNAV/VNAV DA		1440-¾	409 (500-¾)	
LNAV MDA	1440-½	409 (500-½)	1440-¾	409 (500-¾)
CIRCLING	1500-1	469 (500-1)	1620-1½ 589 (600-1½)	1860-2¾ 829 (900-2¾)

NC-1, 19 MAR 2026 to 16 APR 2026

NC-1, 19 MAR 2026 to 16 APR 2026